



W140



TECHNICAL INFORMATION

Flow (L/min)	12
Flow (US Gpm)	3,17
Rotation regime (rpm)	1450
Pressure (MPa)	14
Pressure (bar)	140
Pressure (psi)	2030
Power (hp)	4
Power (kW)	2,94
Overall dimensions L x l x h (mm)	225x223x142,5
Weight (kg)	7,7



Documents

Male shaft (key)

Male shaft (key) - vers. HH

Hollow shaft (key) Ø28 - vers. B

Pump head with VH integrated valve

Pump head with VK integrated valve

Illustration Male shaft (key)

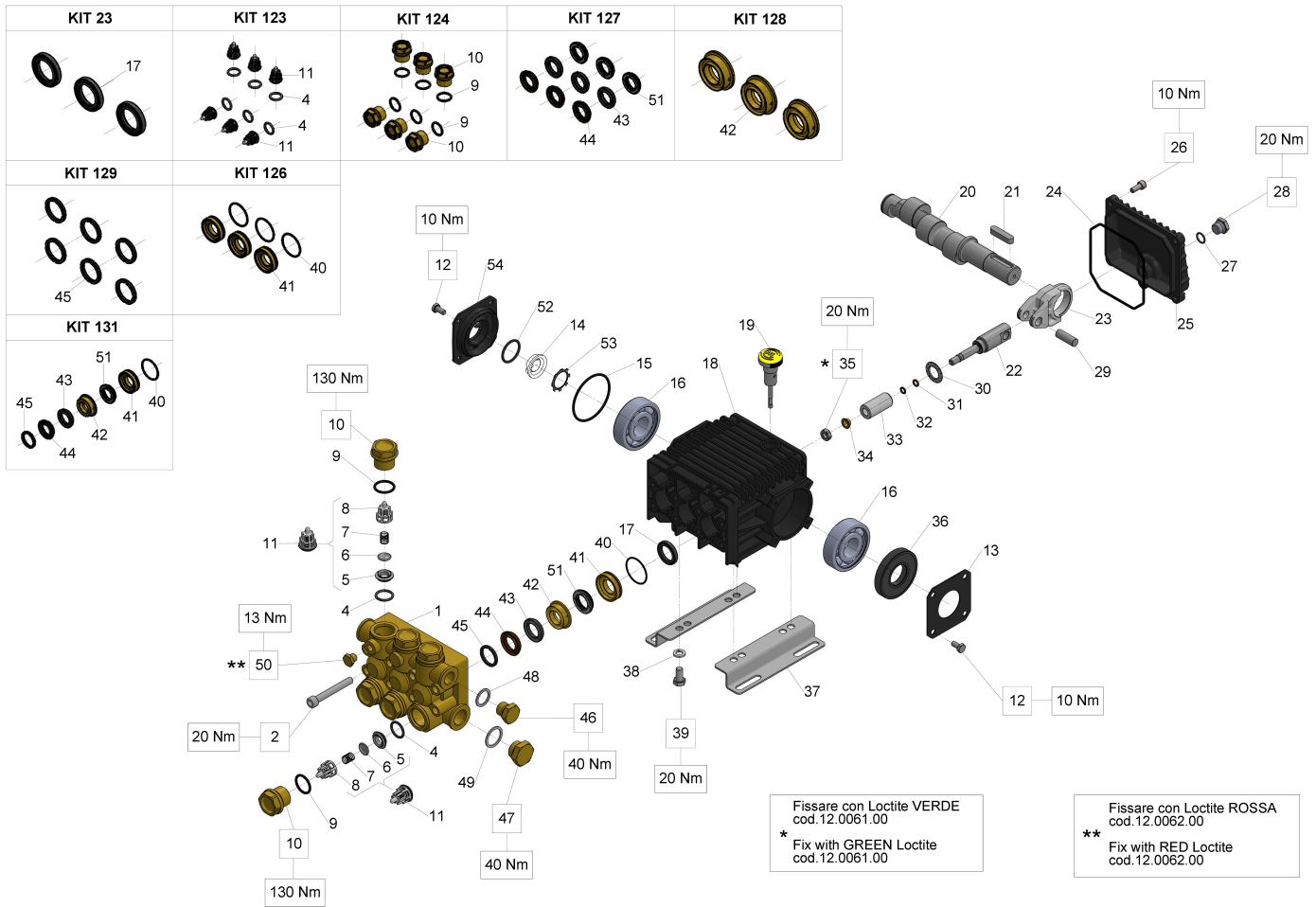


Illustration Male shaft (key)

Pos.	Code	Description	Qty	Notes
KIT131	34013101	KIT 131 CPL.SEAL PIST. D. 18	1	
KIT129	34012901	KIT 129 HEAD RING D.18	1	
KIT128	34012801	KIT 128 INTERMEDIATE RING D.18	1	
KIT127	34012701	KIT 127 PACKING D. 18	1	
KIT126	34012601	KIT 126 PACKING RETAINER D.18	1	
KIT124	34012401	KIT 124 VALVE CAPS	1	
KIT123	34012301	KIT 123 INTAKE/DELIVERY VALVE	1	
KIT23	34002301	KIT 23 OIL SEAL D.20X30X5	1	
54	53150022	SIDE CRANKCASE COVER	1	
53	90067100	CIRCLIP ZJ30	1	
52	90385900	O-RING 25,07X2,62 (3100)	1	
51	90268400	PACKING 18X30X7 (L.P.)	3	
50	98196600	PLUG G1/8X8	1	
49	96751400	WASHER 21,5X27X1,5	1	
48	96738000	WASHER 17,5X23X1,5	1	
47	98217600	PLUG G1/2X10	1	
46	98210000	PLUG G3/8X13	1	
45	44100151	HEAD RING D. 18	3	
44	90268200	PACKING D. 18	3	
43	90268300	RESTOP RING D. 18	3	
42	44216170	INTERMEDIATE RING D. 18	3	
41	44080170	PACKING RETAINER D. 18	3	
40	90361200	O-RING 31,47X1,78 (2125)	3	
39	99303700	SCREW M 8x16-5739	4	
38	96701600	WASHER 8,4	4	
37	50200074	PUMP FOOT	2	
36	90164100	OIL SEAL D.25X62X10	1	
35	92221600	NUT M8X13X5	3	
34	44211570	WASHER D. 8	3	
33	44040109	PISTON D.18X37.5	3	
32	90357200	O-RING 5,28X1,78 SPEC. (2021)	3	
31	90502200	ANTI-EXTRUSION RING	3	
30	96735000	WASHER D.16X28X1	3	
29	97734000	CONNECTING-ROD PIN D.10X29,5	3	
28	98204250	PLUG G1/4"x12	1	
27	90358500	O-RING 10,82X1,78 (2043)	1	
26	99183700	SCREW M 6x14 UNI 5931	5	

Illustration Male shaft (key)

Pos.	Code	Description	Qty	Notes
25	44160022	REAR CRANKCASE COVER	1	
24	90392000	O-RING 101,27X2,62 (3400)	1	
23	44030022	CONNECTING ROD	3	
22	44050066	PISTON GUIDE	3	
21	91489200	KEY 8(h9)X7X35 UNI 6604/A	1	
20	44020335	CRANKSHAFT C.11 (D.24)	1	
19	98210300	OIL DIP-STICK G3/8X51	1	
18	44010022	CRANKCASE	1	
17	90161400	OIL SEAL 20x30x5	3	
16	91833100	BALL BEARING 6305 SKF	2	
15	90389800	O-RING 56,82X2,62 (3225)	1	
14	53210851	OIL LEVEL GAUGE	1	
13	50150074	CRANKCASE COVER	1	
12	99180700	SCREW M 6x12 UNI 5739	8	
11	36711501	INTAKE/DELIVERY VALVE	6	
10	98222600	VALVE CAP M24X1,5X17	6	
9	90384700	O-RING 20,29X2,62(3081)	6	
8	36202551	VALVE CAGE	6	
7	94737600	SPRING D. 9,4X14,8	6	
6	36200176	VALVE PLATE	6	
5	36200366	VALVE SEAT	6	
4	90384100	O-RING 17,12X2,62 (3068)	6	
2	99317500	SCREW M 8x60 UNI 5931	8	
1	44120441	MANIFOLD	1	

Illustration Male shaft (key) - vers. HH

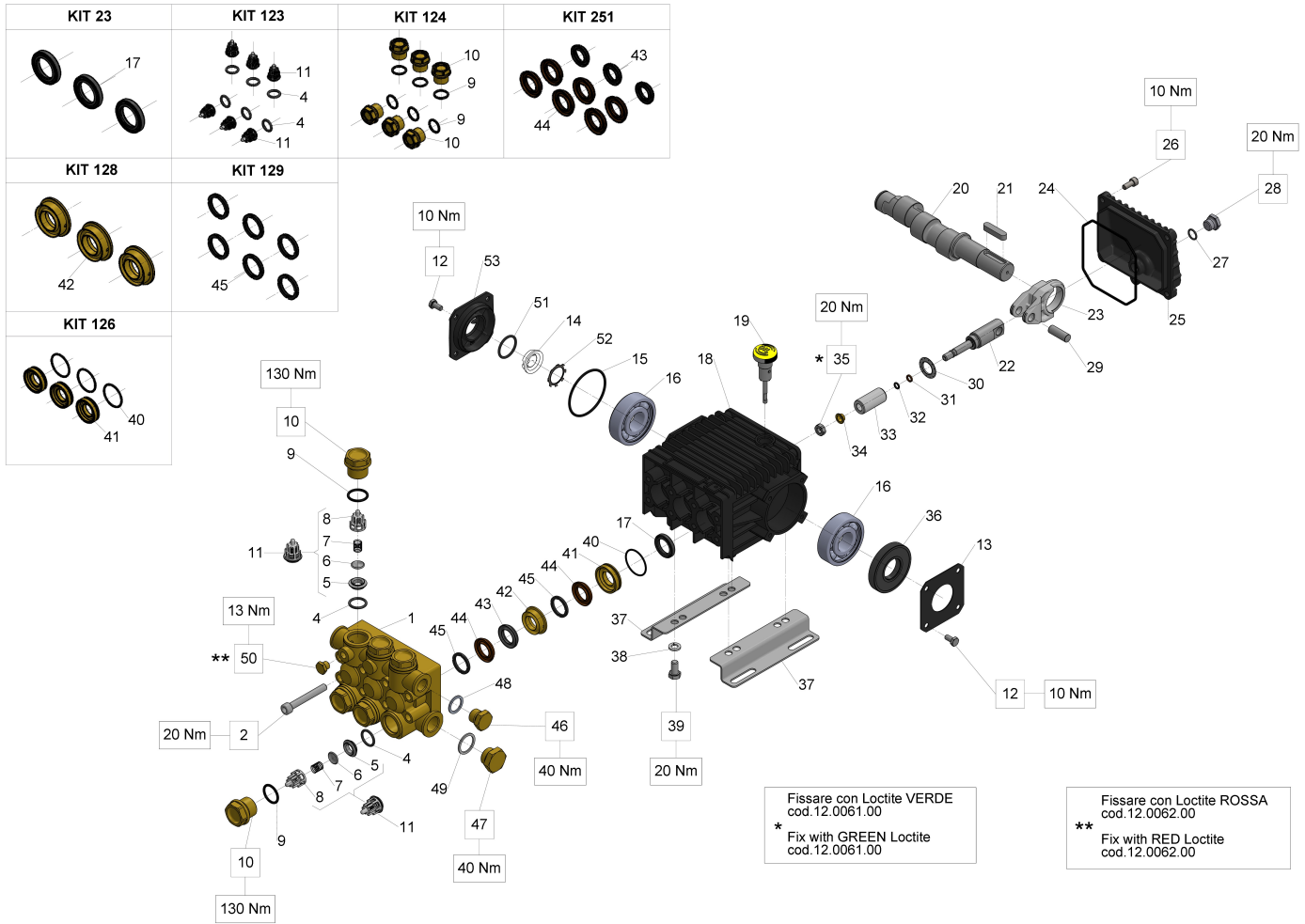


Illustration Male shaft (key) - vers. HH

Pos.	Code	Description	Qty	Notes
KIT251	34025101	KIT 251 SEAL D.18 (44.HH)	1	
KIT129	34012901	KIT 129 HEAD RING D.18	1	
KIT128	34012801	KIT 128 INTERMEDIATE RING D.18	1	
KIT126	34012601	KIT 126 PACKING RETAINER D.18	1	
KIT124	34012401	KIT 124 VALVE CAPS	1	
KIT123	34012301	KIT 123 INTAKE/DELIVERY VALVE	1	
KIT23	34002301	KIT 23 OIL SEAL D.20X30X5	1	
53	53150022	SIDE CRANKCASE COVER	1	
52	90067100	CIRCLIP ZJ30	1	
51	90385900	O-RING 25,07X2,62 (3100)	1	
50	98196600	PLUG G1/8X8	1	
49	96751400	WASHER 21,5X27X1,5	1	
48	96738000	WASHER 17,5X23X1,5	1	
47	98217600	PLUG G1/2X10	1	
46	98210000	PLUG G3/8X13	1	
45	44100151	HEAD RING D. 18	6	
44	90268200	PACKING D. 18	6	
43	90268300	RESTOP RING D. 18	3	
42	44216170	INTERMEDIATE RING D. 18	3	
41	44080170	PACKING RETAINER D. 18	3	
40	90361200	O-RING 31,47X1,78 (2125)	3	
39	99303700	SCREW M 8x16-5739	4	
38	96701600	WASHER 8,4	4	
37	50200074	PUMP FOOT	2	
36	90164100	OIL SEAL D.25X62X10	1	
35	92221600	NUT M8X13X5	3	
34	44211570	WASHER D. 8	3	
33	44040109	PISTON D.18X37.5	3	
32	90357200	O-RING 5,28X1,78 SPEC. (2021)	3	
31	90502200	ANTI-EXTRUSION RING	3	
30	96735000	WASHER D.16X28X1	3	
29	97734000	CONNECTING-ROD PIN D.10X29,5	3	
28	98204250	PLUG G1/4"x12	1	
27	90358500	O-RING 10,82X1,78 (2043)	1	
26	99183700	SCREW M 6x14 UNI 5931	5	
25	44160022	REAR CRANKCASE COVER	1	
24	90392000	O-RING 101,27X2,62 (3400)	1	

Illustration Male shaft (key) - vers. HH

Pos.	Code	Description	Qty	Notes
23	44030022	CONNECTING ROD	3	
22	44050066	PISTON GUIDE	3	
21	91489200	KEY 8(h9)X7X35 UNI 6604/A	1	
20	44020335	CRANKSHAFT C.11 (D.24)	1	
19	98210300	OIL DIP-STICK G3/8X51	1	
18	44010022	CRANKCASE	1	
17	90161400	OIL SEAL 20x30x5	3	
16	91833100	BALL BEARING 6305 SKF	2	
15	90389800	O-RING 56,82X2,62 (3225)	1	
14	53210851	OIL LEVEL GAUGE	1	
13	50150074	CRANKCASE COVER	1	
12	99180700	SCREW M 6x12 UNI 5739	8	
11	36711501	INTAKE/DELIVERY VALVE	6	
10	98222600	VALVE CAP M24X1,5X17	6	
9	90384700	O-RING 20,29X2,62(3081)	6	
8	36202551	VALVE CAGE	6	
7	94737600	SPRING D. 9,4X14,8	6	
6	36200176	VALVE PLATE	6	
5	36200366	VALVE SEAT	6	
4	90384100	O-RING 17,12X2,62 (3068)	6	
2	99317500	SCREW M 8x60 UNI 5931	8	
1	44120441	MANIFOLD	1	

Illustration Hollow shaft (key) Ø28 - vers. B

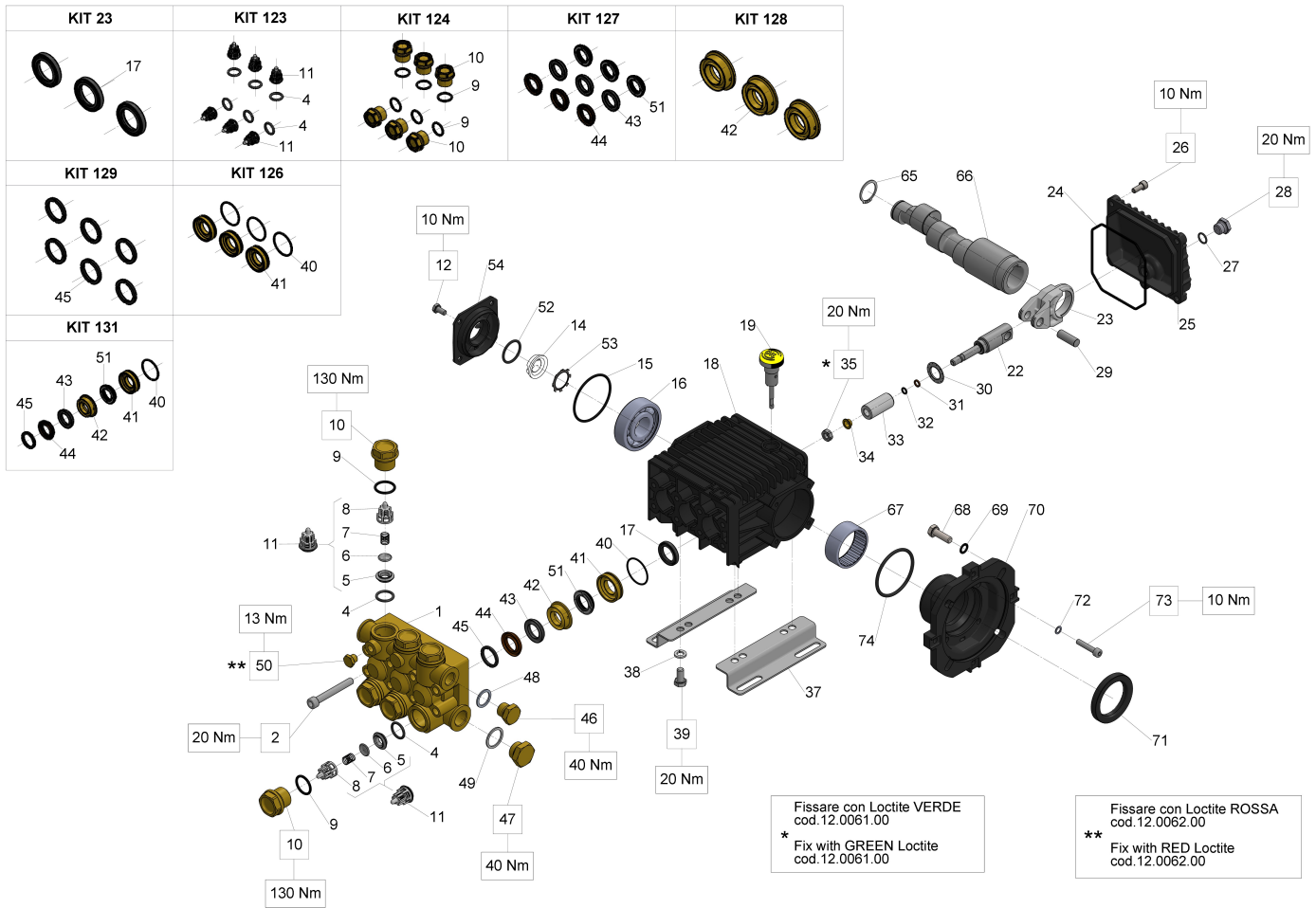


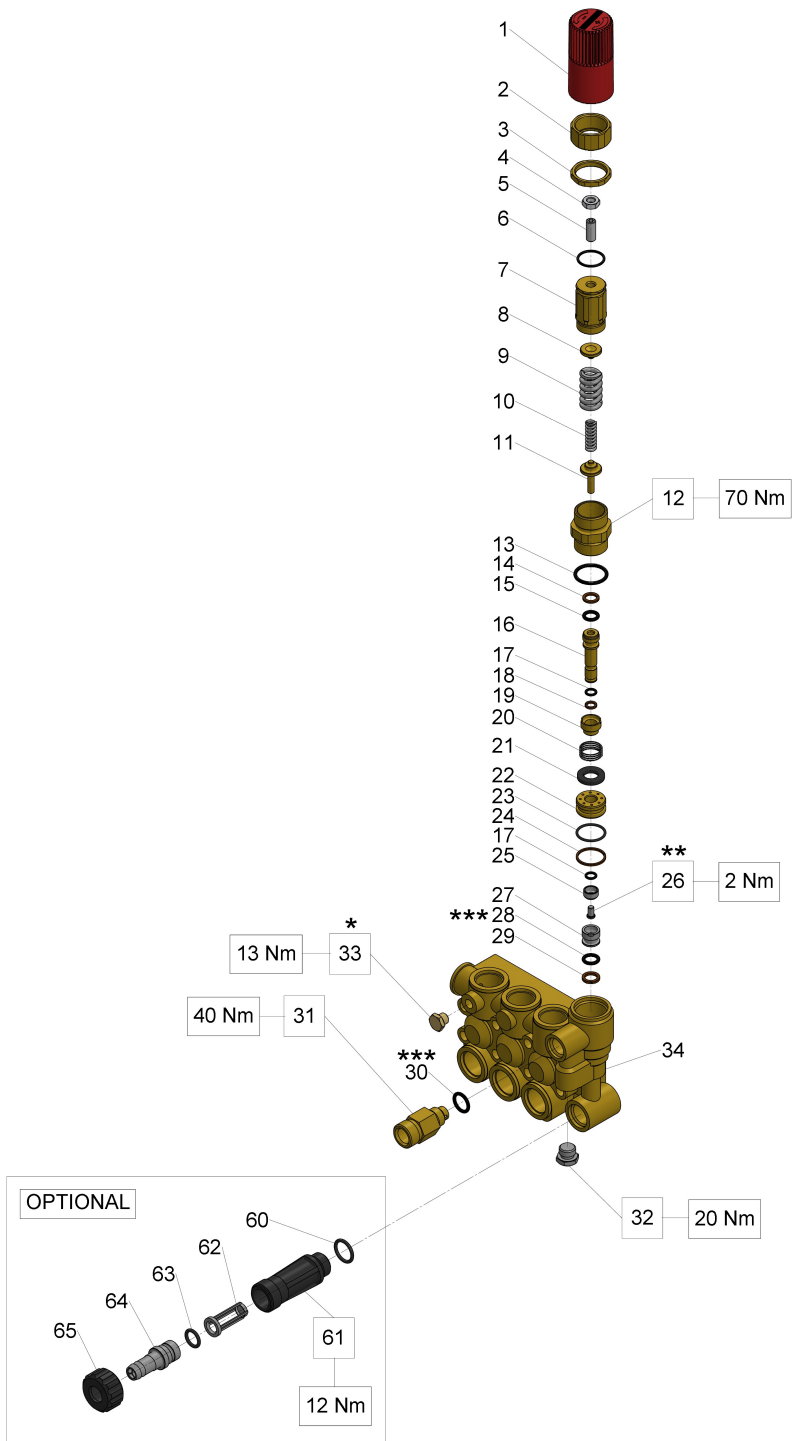
Illustration Hollow shaft (key) Ø28 - vers. B

Pos.	Code	Description	Qty	Notes
KIT23	34002301	KIT 23 OIL SEAL D.20X30X5	1	
KIT131	34013101	KIT 131 CPL.SEAL PIST. D. 18	1	
KIT129	34012901	KIT 129 HEAD RING D.18	1	
KIT128	34012801	KIT 128 INTERMEDIATE RING D.18	1	
KIT127	34012701	KIT 127 PACKING D. 18	1	
KIT126	34012601	KIT 126 PACKING RETAINER D.18	1	
KIT124	34012401	KIT 124 VALVE CAPS	1	
KIT123	34012301	KIT 123 INTAKE/DELIVERY VALVE	1	
74	90409700	O-RING 55,56X3,53 (159)	1	
73	99191200	SCREW M 6x30 UNI 5931	4	
72	96693800	WASHER 6,4X10X0,7	4	
71	90169000	OIL SEAL D. 45X62X8	1	
70	10049422	FLANGE FOR EL.MOT.B3B14 (EUR)	1	
69	96701400	WASHER 8,4X13X0,8	4	
68	99306700	SCREW M 8x25 UNI 5739	4	
67	91856800	NEEDLE BEARING DHK 4520	1	
66	44021365	CRANKSHAFT C.11(28 MM. HOLLOW)	1	
65	90063500	CIRCLIP D. 25 UNI 7435	1	
54	53150022	SIDE CRANKCASE COVER	1	
53	90067100	CIRCLIP ZJ30	1	
52	90385900	O-RING 25,07X2,62 (3100)	1	
51	90268400	PACKING 18X30X7 (L.P.)	3	
50	98196600	PLUG G1/8X8	1	
49	96751400	WASHER 21,5X27X1,5	1	
48	96738000	WASHER 17,5X23X1,5	1	
47	98217600	PLUG G1/2X10	1	
46	98210000	PLUG G3/8X13	1	
45	44100151	HEAD RING D. 18	3	
44	90268200	PACKING D. 18	3	
43	90268300	RESTOP RING D. 18	3	
42	44216170	INTERMEDIATE RING D. 18	3	
41	44080170	PACKING RETAINER D. 18	3	
40	90361200	O-RING 31,47X1,78 (2125)	3	
39	99303700	SCREW M 8x16-5739	4	
38	96701600	WASHER 8,4	4	
37	50200074	PUMP FOOT	2	
35	92221600	NUT M8X13X5	3	

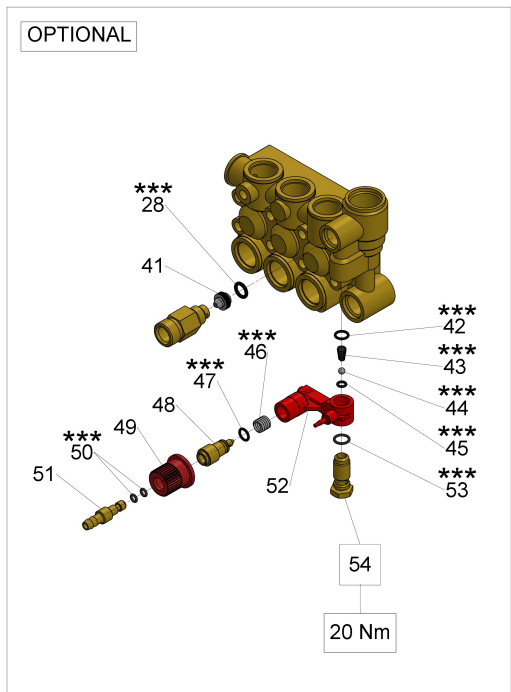
Illustration Hollow shaft (key) Ø28 - vers. B

Pos.	Code	Description	Qty	Notes
34	44211570	WASHER D. 8	3	
33	44040109	PISTON D.18X37.5	3	
32	90357200	O-RING 5,28X1,78 SPEC. (2021)	3	
31	90502200	ANTI-EXTRUSION RING	3	
30	96735000	WASHER D.16X28X1	3	
29	97734000	CONNECTING-ROD PIN D.10X29,5	3	
28	98204250	PLUG G1/4"x12	1	
27	90358500	O-RING 10,82X1,78 (2043)	1	
26	99183700	SCREW M 6x14 UNI 5931	5	
25	44160022	REAR CRANKCASE COVER	1	
24	90392000	O-RING 101,27X2,62 (3400)	1	
23	44030022	CONNECTING ROD	3	
22	44050066	PISTON GUIDE	3	
19	98210300	OIL DIP-STICK G3/8X51	1	
18	44010022	CRANKCASE	1	
17	90161400	OIL SEAL 20x30x5	3	
16	91833100	BALL BEARING 6305 SKF	1	
15	90389800	O-RING 56,82X2,62 (3225)	1	
14	53210851	OIL LEVEL GAUGE	1	
12	99180700	SCREW M 6x12 UNI 5739	4	
11	36711501	INTAKE/DELIVERY VALVE	6	
10	98222600	VALVE CAP M24X1,5X17	6	
9	90384700	O-RING 20,29X2,62(3081)	6	
8	36202551	VALVE CAGE	6	
7	94737600	SPRING D. 9,4X14,8	6	
6	36200176	VALVE PLATE	6	
5	36200366	VALVE SEAT	6	
4	90384100	O-RING 17,12X2,62 (3068)	6	
2	99317500	SCREW M 8x60 UNI 5931	8	
1	44120441	MANIFOLD	1	

Illustration Pump head with VH integrated valve



KIT 94 ***					KIT 137	
28	30	42	43	44	14	
45	46	47	50	53	15	
					16	
					17	
					18	
					19	
					20	
					21	
					22	
					23	
					24	
					25	
					26	
					27	
					*** 28	
					29	



Fissare con Loctite 542 col.ROSSO
 * Fix with Loctite 542 col.RED

Fissare con Loctite 270 col.VERDE
 ** Fix with Loctite 270 col.GREEN

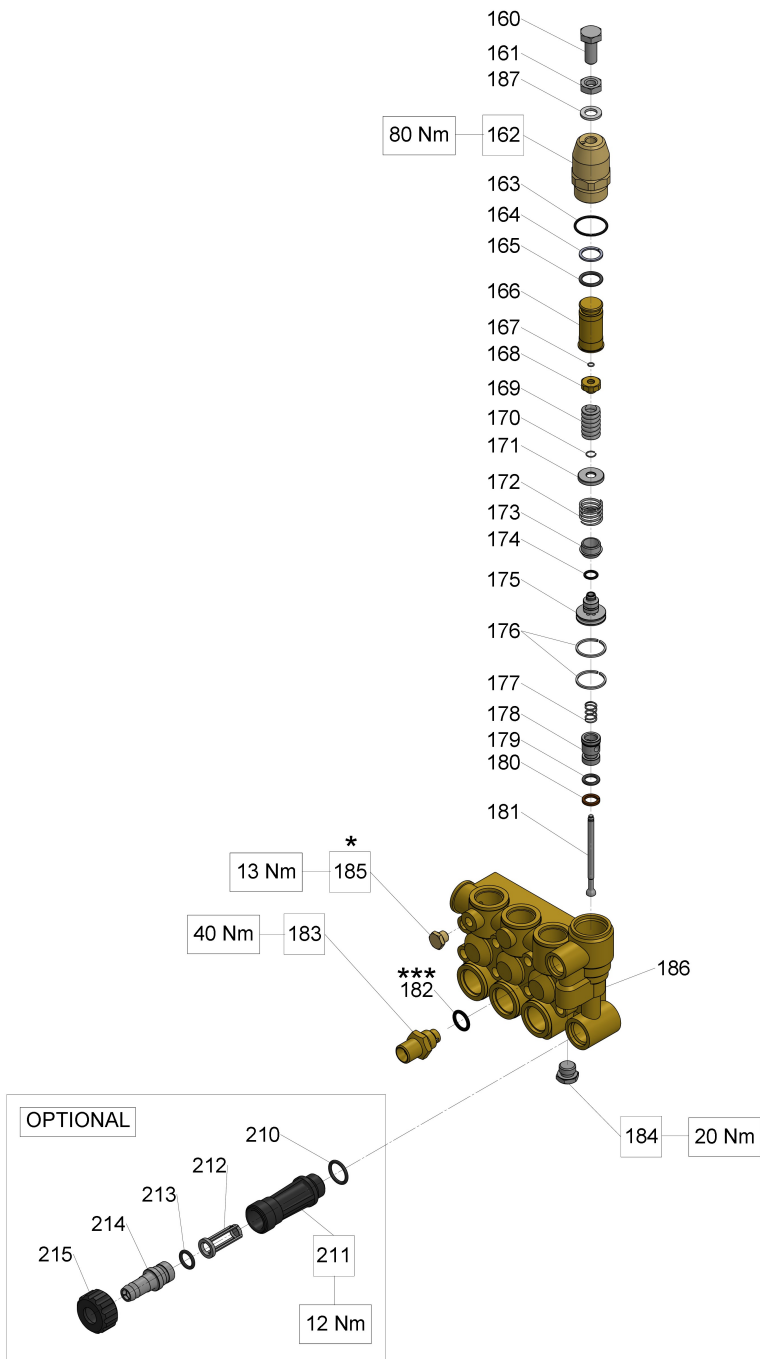
Illustration Pump head with VH integrated valve

Pos.	Code	Description	Qty	Notes
KIT94	34009401	KIT 94 CHIMJET KR/CONTROLSET	1	
KIT137	34013701	KIT 137 PRESSURE REG. VALVE	1	
65	92982800	WING NUT G3/4	1	
64	36256951	INLET HOSE BARB FITTING (PL.)	1	
63	90382800	O-RING 12,37X2,62 (3050)	1	
62	92892500	FILTER D. 12X35	1	
61	36318251	INLET NIPPLE G 3/4	1	
60	90384100	O-RING 17,12X2,62 (3068)	1	
54	36256370	CHEM. INJECTOR VALVE SEAT	1	
53	90358500	O-RING 10,82X1,78 (2043)	1	
52	36318151	INJECTOR BODY	1	
51	36256670	CHEM. HOSE BARB FITTING	1	
50	90357000	O-RING 4,48X1,78 (2018)	2	
49	36256551	CHEM. REGULATION KNOB	1	
48	36256470	INJECTOR SHUTTER	1	
47	90358000	O-RING 8,73X1,78 SPEC. (108)	1	
46	94738300	SPRING D.9,75X10	1	
45	90357200	O-RING 5,28X1,78 SPEC. (2021)	1	
44	97478200	BALL 7/32(5,556) STAINLESS	1	
43	94821700	TAPER SPRING D.4,3X7,3X11	1	
42	90358200	O-RING 9,25X1,78 (2037)	1	
41	10015166	NOZZLE D. 2.0	1	
41	10007666	NOZZLE DIAM. 2,2	1	
34	44120541	MANIFOLD W/VALVE (PIST.D.18)	1	
33	98196600	PLUG G1/8X8	1	
32	98205700	PLUG M14X1,5X9	1	
31	10007870	NIPPLE D. 3 G3/8	1	
31	10014770	NIPPLE G3/8 / M22X1,5 BORE D.3	1	
30	90383200	O-RING 13,95X2,62 SPEC. (3056)	1	
29	90506500	ANTI-EXTRUSION RING (OR 112)	1	
28	90382200	O-RING 9,92X2,62 SPEC. (112)	2	
27	36316466	CONTROLSET W1 VALVE SEAT	1	
26	99150900	SCREW M5X7.5 STAINLESS	1	

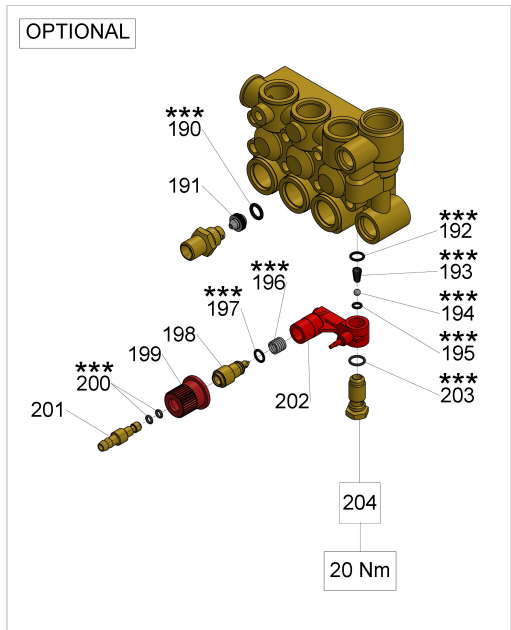
Illustration Pump head with VH integrated valve

Pos.	Code	Description	Qty	Notes
25	36319066	SPHERICAL VALVE	1	
24	90514400	ANTI-EXTRUSION RING	1	
23	90360000	O-RING 21,95X1,78 (2087)	1	
22	36322970	VALVE GUIDE	1	
21	36323151	FLAT VALVE (PLAST)	1	
20	94748500	SPRING D. 18,5X11	1	
19	36323070	SPACER	1	
18	90502500	ANTI-EXTRUSION RING (OR 106)	1	
17	90357500	O-RING 6,75X1,78 SPEC. (2106)	2	
16	36323470	CONTROL PISTON	1	
15	90382000	O-RING 9,13X2,62 SPEC. (109)	1	
14	90505200	ANTI-EXTRUSION RING (OR 109)	1	
13	90385700	O-RING 23,81X2,62 (132)	1	
12	36322870	GUIDE BUSH	1	
11	36323370	LOWER SPRING PLATE	1	
10	94734500	SPRING D. 7,6X29	1	
9	94743600	SPRING Dm 15X35	1	
8	36316970	SPRING PLATE	1	
7	36318570	PRESSURE REG.SCREW	1	
6	90359800	O-RING 20,35X1,78 (2081)	1	
5	99305400	SCREW M8X20 UNI 5923 12.9	1	
4	92221800	NUT M8X1,25X5X13 UNI 5589	1	
3	92293500	NUT M 28X1,5	1	
2	36318670	LOCKING NUT	1	
1	36318751	PRESSURE REGULATION KNOB	1	

Illustration Pump head with VK integrated valve



KIT 94 ***					KIT177
182	190	192	193	194	167
195	196	197	200	203	168
					169
					170
					171
					172
					173
					174
					175
					176
					177
					178
					179
					180
					181



Fissare con Loctite 542 col.ROSSO
 * Fix with Loctite 542 col.RED

Illustration Pump head with VK integrated valve

Pos.	Code	Description	Qty	Notes
KIT177	34017701	KIT 177 "K"UNL.VALVE INTERIOR1		
KIT94	34009401	KIT 94 CHIMJET KR/CONTROLSET	1	
215	92982800	WING NUT G3/4	1	
214	36256951	INLET HOSE BARB FITTING (PL.)	1	
213	90382800	O-RING 12,37X2,62 (3050)	1	
212	92892500	FILTER D. 12X35	1	
211	36318251	INLET NIPPLE G 3/4	1	
210	90384100	O-RING 17,12X2,62 (3068)	1	
204	36256370	CHEM. INJECTOR VALVE SEAT	1	
203	90358500	O-RING 10,82X1,78 (2043)	1	
202	36318151	INJECTOR BODY	1	
201	36256670	CHEM. HOSE BARB FITTING	1	
200	90357000	O-RING 4,48X1,78 (2018)	2	
199	36256551	CHEM. REGULATION KNOB	1	
198	36256470	INJECTOR SHUTTER	1	
197	90358000	O-RING 8,73X1,78 SPEC. (108)	1	
196	94738300	SPRING D.9,75X10	1	
195	90357200	O-RING 5,28X1,78 SPEC. (2021)	1	
194	97478200	BALL 7/32(5,556) STAINLESS	1	
193	94821700	TAPER SPRING D.4,3X7,3X11	1	
192	90358200	O-RING 9,25X1,78 (2037)	1	
191	10007666	NOZZLE DIAM. 2,2	1	
191	10015166	NOZZLE D. 2.0	1	
190	90382200	O-RING 9,92X2,62 SPEC. (112)	1	
187	96710300	WASHER D. 10,2X16X1.5	1	
186	44120541	MANIFOLD W/VALVE (PIST.D.18)	1	
185	98196600	PLUG G1/8X8	1	
184	98205700	PLUG M14X1,5X9	1	
183	10014770	NIPPLE G3/8 / M22X1,5 BORE D.3	1	
183	10007870	NIPPLE D. 3 G3/8	1	
182	90383200	O-RING 13,95X2,62 SPEC. (3056)	1	
181	36327566	VALVE ROD	1	
180	90506500	ANTI-EXTRUSION RING (OR 112)	1	

Illustration Pump head with VK integrated valve

Pos.	Code	Description	Qty	Notes
179	90382300	O-RING 9,92X2,62 (112)	1	
178	36327666	VALVE SEAT	1	
177	94737200	SPRING D. 9,3X15	1	
176	92771000	COMPRESSION RING D.25	2	
175	36327270	CONTROL PISTON	1	
174	90358100	O-RING 8,73X1,78 - (108)	1	
173	36327756	SHUTTER	1	
172	94748000	SPRING D. 18.2X16.5	1	
171	36327370	SPRING PLATE	1	
170	90006200	CIRCLIP D. 8 UNI 7433	1	
169	94740800	SPRING D. 12,5X26	1	
168	36327470	SPRING PLATE	1	
167	90005900	CIRCLIP D. 5 UNI 7433	1	
166	36327170	STROKE STOPPER	1	
165	90383500	O-RING 15,08X2,62 (119)	1	
164	90509000	ANTI-EXTRUSION RING	1	
163	90360400	O-RING 25,12X1,78 (2100)	1	
162	36327070	UPPER VALVE BODY	1	
161	92236800	NUT M10x1,25x17x8 UNI 5588	1	
160	99366300	SCREW M 10x25 UNI 5740	1	