



W922



TECHNICAL INFORMATION

Flow (L/min)	21
Flow (US Gpm)	5,55
Rotation regime (rpm)	1750
Pressure (MPa)	20
Pressure (bar)	200
Pressure (psi)	2900
Power (hp)	10
Power (kW)	7,35
Overall dimensions L x l x h (mm)	327x236x180
Weight (kg)	14,5



Documents

Male shaft (key)

Male shaft (key) - vers. ATEX

Illustration Male shaft (key)

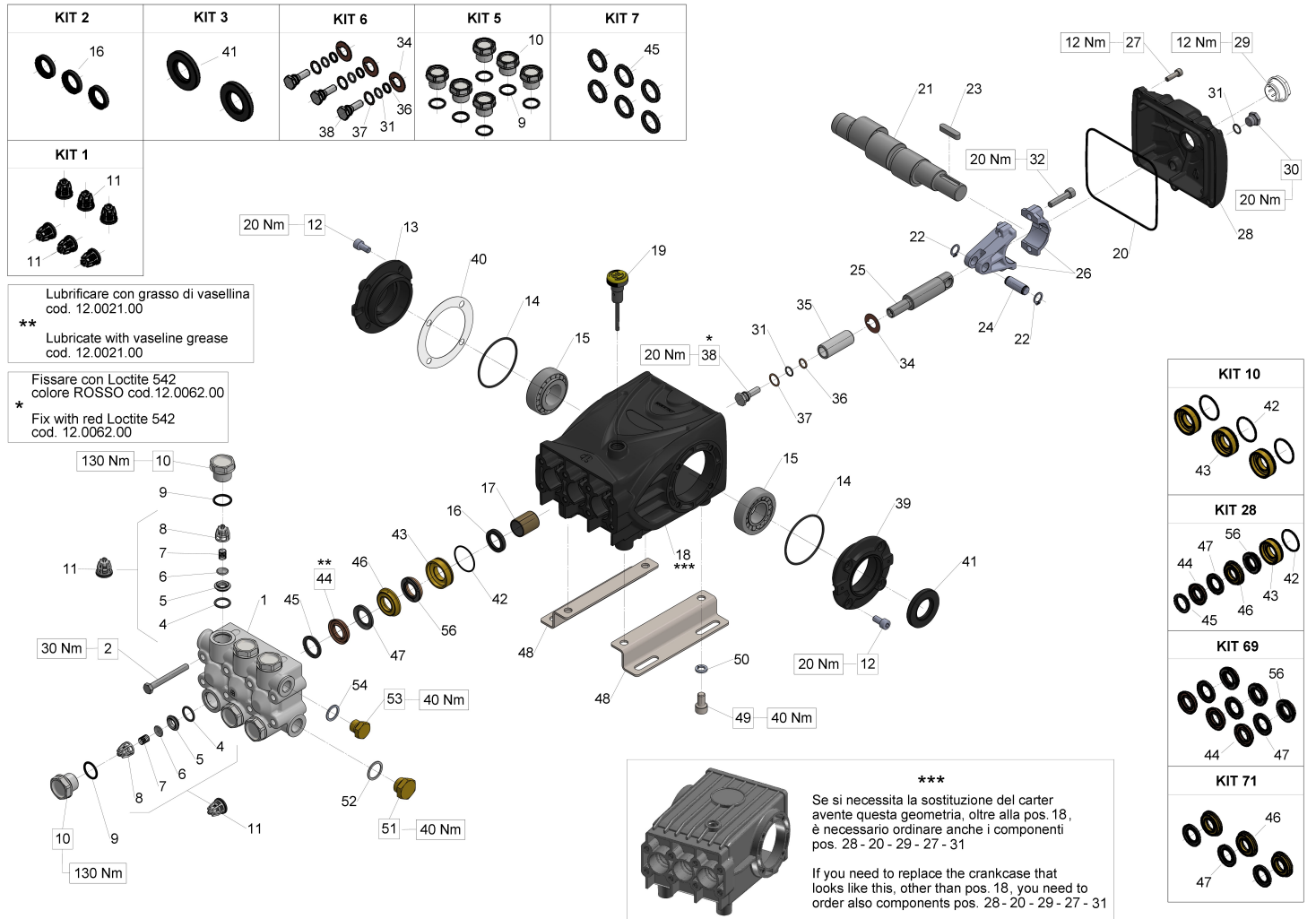


Illustration Male shaft (key)

Pos.	Code	Description	Qty	Notes
KIT71	34007101	KIT 71 INTERMEDIATE RING D.20	1	
KIT7	34000701	KIT 7 HEAD RING D.20	1	
KIT69	34006901	KIT 69 PACKING D.20 W/RESTOP 1		
KIT6	34000601	KIT 6 PISTON BOLT	1	
KIT5	34000501	KIT 5 INTAKE/DEL.VALVE CAPS	1	
KIT3	34000301	KIT 3 OIL SEAL D.30X55X7	1	
KIT28	34002801	KIT 28 COMPL.SEAL FOR PIST.D20	1	
KIT2	34000201	KIT 2 OIL SEAL D. 22X32X5,5	1	
KIT10	34001001	KIT 10 PACKING RETAINER D.20	1	
KIT1	34000101	KIT 1 INTAKE/DELIVERY VALVE	1	
56	90271000	PACKING D.20X35X9 L.P.	3	
54	96738000	WASHER 17,5X23X1,5	1	
53	98210000	PLUG G3/8X13	1	
52	96751400	WASHER 21,5X27X1,5	1	
51	98217600	PLUG G1/2X10	1	
50	96710600	WASHER 10,2	4	
49	99364400	SCREW M 10x18-5931	4	
48	47200074	PUMP FOOT	2	
47	90270400	RESTOP RING D. 20 TYPE 6/1	3	
46	47216970	INTERM.RING D. 20 (SPEC.)	3	
45	47100051	HEAD RING D. 20	3	
44	90270500	PACKING 20x35x7,5	3	
43	47080570	PACKING RETAINER D. 20x35	3	
42	90361600	O-RING 34,65X1,78 (2137)	3	
41	90164800	OIL SEAL 30x55x7	1	
40	97568000	SHIM D.74.5X104X0.3	1	
40	97567800	SHIM D.74,5X104X0,1	1	
39	47151022	OPEN SIDE COVER (47-66)	1	
38	47219566	PISTON SCREW	3	
37	96728000	WASHER 14X18,5X0,5	3	
36	90506700	ANTI-EXTRUSION RING	3	
35	47040409	PISTON D. 20x50	3	
34	96728600	WASHER 14X28X0,5	3	
32	99309900	SCREW M 8x35 UNI 5931	6	
31	90358500	O-RING 10,82X1,78 (2043)	4	

Illustration Male shaft (key)

Pos.	Code	Description	Qty	Notes
30	98204250	PLUG G1/4"x12	1	
29	47221301	OIL SIGHT GLASS ASSY G3/4	1	
28	47160622	CRANKCASE COVER	1	
27	99188400	SCREW M 6x20 UNI 5931	5	
26	47030001	CONNECTING ROD	3	
25	47050466	PISTON GUIDE - S.S.	3	
24	97738000	CONNECTING-ROD PIN D.13X35,5	3	
23	91489200	KEY 8(h9)X7X35 UNI 6604/A	1	
22	90055700	CIRCLIP D.12 UNI 7435	6	
21	47023035	CRANKSHAFT C.13	1	
20	90392200	O-RING D.133.02X 2,62(3525)	1	
19	98210600	OIL DIP-STICK G3/8X80	1	
18	47010822	CRANKCASE	1	
17	90912600	BUSHING 22X25X30	3	
16	90162500	OIL SEAL 22x32x5	3	
15	91837500	TAPER BEARING	2	
14	90391300	O-RING 67,95X2,62 (3268)	2	
13	47151122	CLOSED SIDE COVER (47-66)	1	
12	99303900	SCREW M 8x16 UNI 5931	8	
11	36703201	VALVE ASSY.	6	
10	98222200	VALVE PLUG M24X2X16 NICKEL PL.	6	
9	90384700	O-RING 20,29X2,62(3081)	6	
8	36200251	VALVE CAGE	6	
7	94737600	SPRING D. 9,4X14,8	6	
6	36200176	VALVE PLATE	6	
5	36200366	VALVE SEAT	6	
4	90384100	O-RING 17,12X2,62 (3068)	6	
2	99320600	HEX-HEAD SCREW M08X70 UNI5737 10.9 Fe/Zn5c1A+De	8	
1	47120241	MANIFOLD	1	

Illustration Male shaft (key) - vers. ATEX

Pos.	Code	Description	Qty	Notes
KIT71	34007101	KIT 71 INTERMEDIATE RING D.20	1	
KIT69	34006901	KIT 69 PACKING D.20 W/RESTOP	1	
KIT28	34002801	KIT 28 COMPL.SEAL FOR PIST.D20	1	
KIT10	34001001	KIT 10 PACKING RETAINER D.20	1	
KIT7	34000701	KIT 7 HEAD RING D.20	1	
KIT6	34000601	KIT 6 PISTON BOLT	1	
KIT5	34000501	KIT 5 INTAKE/DEL.VALVE CAPS	1	
KIT3	34000301	KIT 3 OIL SEAL D.30X55X7	1	
KIT2	34000201	KIT 2 OIL SEAL D. 22X32X5,5	1	
KIT1	34000101	KIT 1 INTAKE/DELIVERY VALVE	1	
62	99180900	SCREW M06X10 5931 A2-70	1	
61	96693950	WASHER 6.4x11.0x0.7 D6798A INOX	1	
60	90075500	STOP RING J45 UNI7437	1	
59	70211751		1	
58	90387700	O-RING 39,34X2,62 (3156)	1	
56	90271000	PACKING D.20X35X9 L.P.	3	
54	96738000	WASHER 17,5X23X1,5	1	
53	98210000	PLUG G3/8X13	1	
52	96751400	WASHER 21,5X27X1,5	1	
51	98217600	PLUG G1/2X10	1	
50	96710600	WASHER 10,2	4	
49	99364400	SCREW M 10x18-5931	4	
48	47200074	PUMP FOOT	2	
47	90270400	RESTOP RING D. 20 TYPE 6/1	3	
46	47216970	INTERM.RING D. 20 (SPEC.)	3	
45	47100051	HEAD RING D. 20	3	
44	90270500	PACKING 20x35x7,5	3	
43	47080570	PACKING RETAINER D. 20x35	3	
42	90361600	O-RING 34,65X1,78 (2137)	3	
41	90164800	OIL SEAL 30x55x7	1	
40	97568000	SHIM D.74.5X104X0.3	1	
40	97567800	SHIM D.74,5X104X0,1	1	
39	47151022	OPEN SIDE COVER (47-66)	1	
38	47219566	PISTON SCREW	3	

Illustration Male shaft (key) - vers. ATEX

Pos.	Code	Description	Qty	Notes
37	96728000	WASHER 14X18,5X0,5	3	
36	90506700	ANTI-EXTRUSION RING	3	
35	47040409	PISTON D. 20x50	3	
34	96728600	WASHER 14X28X0,5	3	
32	99309900	SCREW M 8x35 UNI 5931	6	
31	90358500	O-RING 10,82X1,78 (2043)	4	
30	98203600	PLUG G1/4x8 FOR PROBE D.6 S.S.	1	
29	47221301	OIL SIGHT GLASS ASSY G3/4	1	
28	47160622	CRANKCASE COVER	1	
27	99188400	SCREW M 6x20 UNI 5931	5	
26	47030001	CONNECTING ROD	3	
25	47050466	PISTON GUIDE - S.S.	3	
24	97738000	CONNECTING-ROD PIN D.13X35,5	3	
23	91489200	KEY 8(h9)X7X35 UNI 6604/A	1	
22	90055700	CIRCLIP D.12 UNI 7435	6	
21	47023035	CRANKSHAFT C.13	1	
20	90392200	O-RING D.133.02X 2,62(3525)	1	
19	98210700	OIL DIPSTICK G3/8X64 D4+FILTER ATEX	1	
18	47010822	CRANKCASE	1	
17	90912600	BUSHING 22X25X30	3	
16	90162500	OIL SEAL 22x32x5	3	
15	91837500	TAPER BEARING	2	
14	90391300	O-RING 67,95X2,62 (3268)	2	
13	47151322	SIDE CRANKCASE COVER (ATEX)	1	
12	99303900	SCREW M 8x16 UNI 5931	8	
11	36703201	VALVE ASSY.	6	
10	98222200	VALVE PLUG M24X2X16 NICKEL PL.	6	
9	90384700	O-RING 20,29X2,62(3081)	6	
8	36200251	VALVE CAGE	6	
7	94737600	SPRING D. 9,4X14,8	6	
6	36200176	VALVE PLATE	6	
5	36200366	VALVE SEAT	6	
4	90384100	O-RING 17,12X2,62 (3068)	6	
2	99320600	HEX-HEAD SCREW M08X70 UNI5737 10.9 Fe/Zn5c1A+De	8	
1	47120241	MANIFOLD	1	