



WK5021



TECHNICAL INFORMATION

Flow (L/min)	21
Flow (US Gpm)	5,55
Rotation regime (rpm)	1450
Pressure (MPa)	50
Pressure (bar)	500
Pressure (psi)	7250
Power (hp)	28
Power (kW)	20,59
Overall dimensions L x l x h (mm)	350x243x187,5
Weight (kg)	21,5



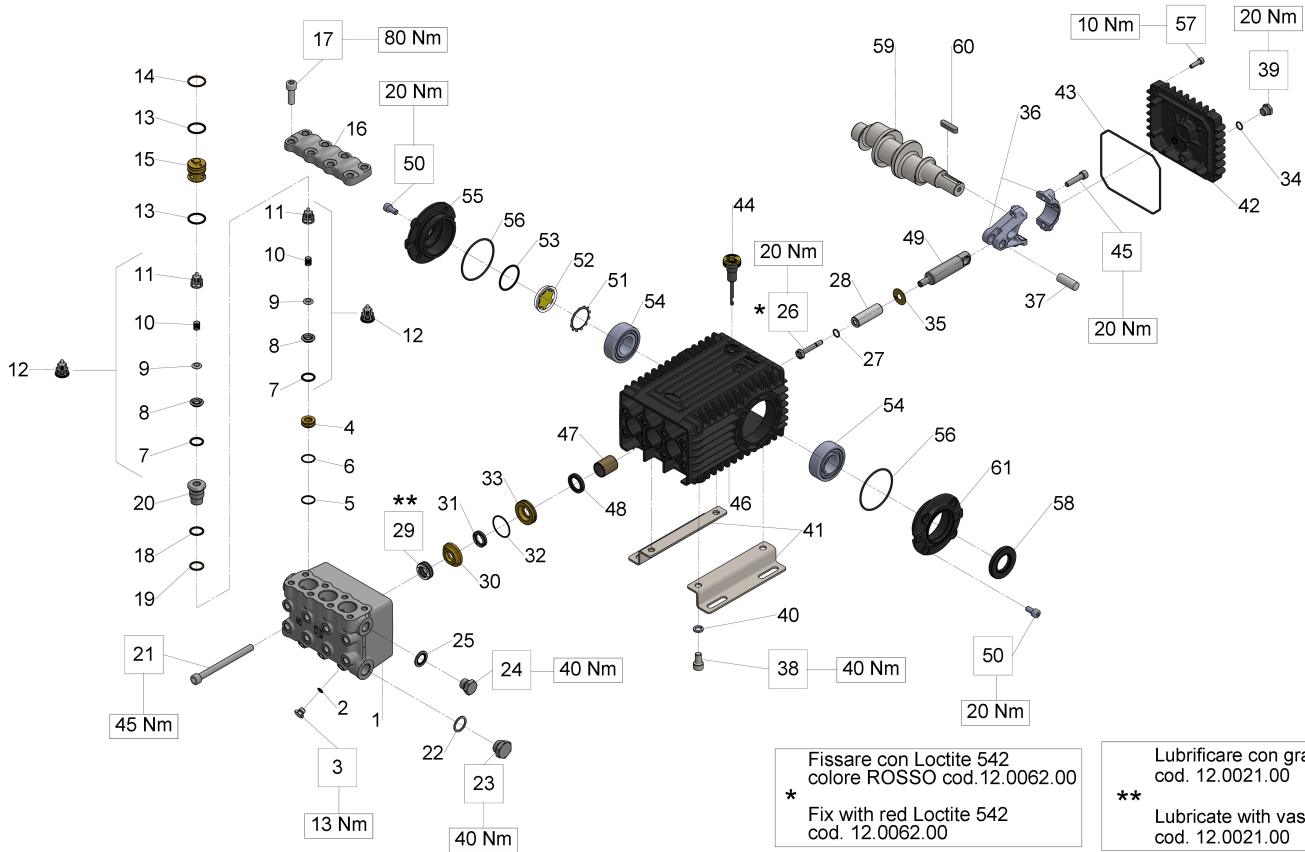
Documents

Male shaft (key)

Male shaft (key) - Flushing

Illustration Male shaft (key)

KIT 150	KIT 2	KIT 3	KIT 176	KIT 180



Fissare con Loctite 542 colore ROSSO cod.12.0062.00
 * Fix with red Loctite 542 cod. 12.0062.00

Lubrificare con grasso di vasellina cod. 12.0021.00
 ** Lubricate with vaseline grease cod. 12.0021.00

Illustration Male shaft (key)

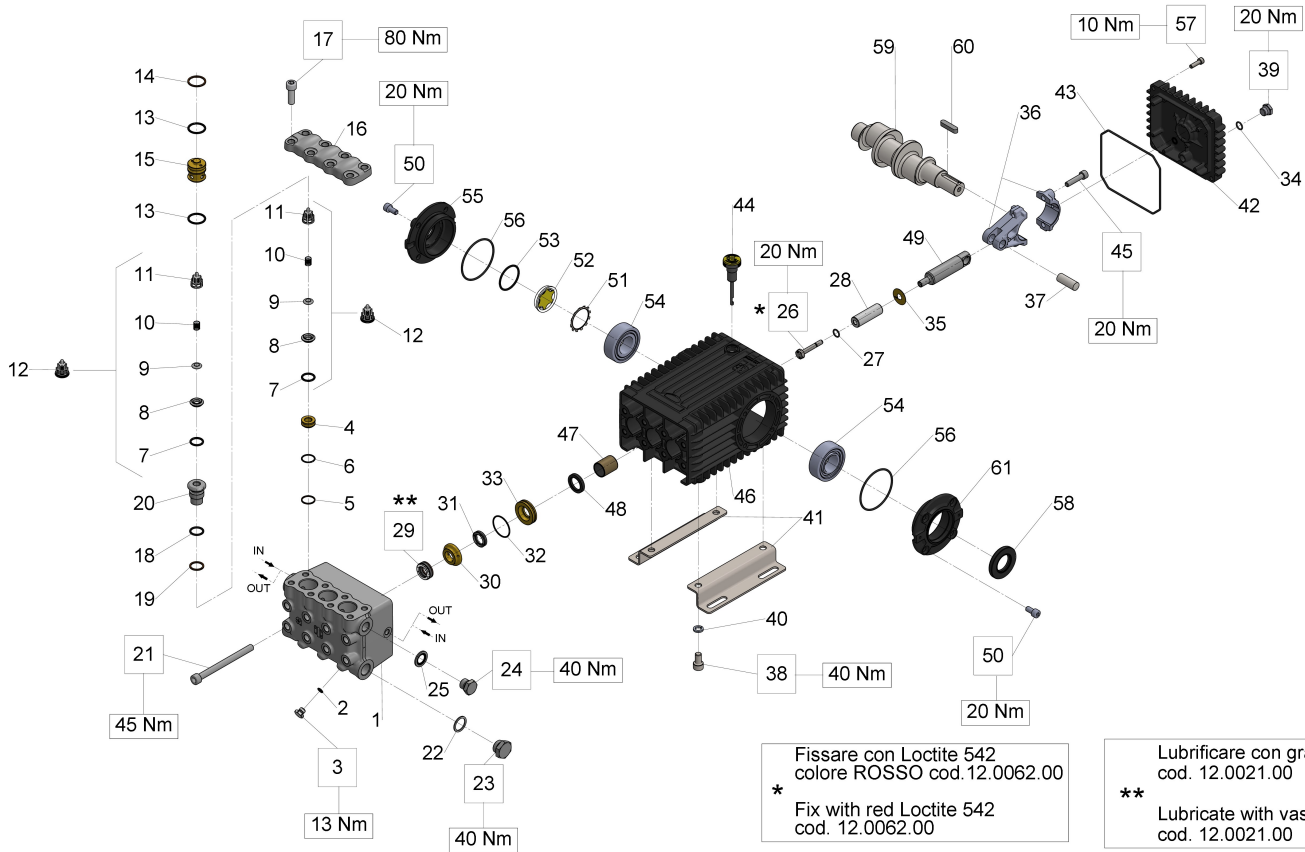
Pos.	Code	Description	Qty	Notes
KIT3	34000301	KIT 3 OIL SEAL D.30X55X7	1	
KIT2	34000201	KIT 2 OIL SEAL D. 22X32X5,5	1	
KIT180	34018001	KIT 180 SEALS D. 18	1	
KIT176	34017601	KIT176 COMPLETE SEALS D.18	1	
KIT150	34015001	KIT 150 INTAKE/DEL.VALVE	1	
61	47151022	OPEN SIDE COVER (47-66)	1	
60	91489200	KEY 8(h9)X7X35 UNI 6604/A	1	
59	66020035	CRANKSHAFT C.19 - D. 24	1	
58	90164800	OIL SEAL 30x55x7	1	
57	99188400	SCREW M 6x20 UNI 5931	4	
56	90391300	O-RING 67,95X2,62 (3268)	2	
55	47151222	SIDE CRANKCASE COVER FOR OIL GAUGE	1	
54	91838000	ROLLER BEARING NJ2206EC	2	
53	90387700	O-RING 39,34X2,62 (3156)	1	
52	70211801	OIL SIGHT GLASS	1	
51	90075600	CIRCLIP D.45 (ZJ45)	1	
50	99303900	SCREW M 8x16 UNI 5931	8	
49	66050066	PISTON GUIDE - S.S.	3	
48	90162500	OIL SEAL 22x32x5	3	
47	90912600	BUSHING 22X25X30	3	
46	66010022	CRANKCASE	1	
45	99309900	SCREW M 8x35 UNI 5931	6	
44	98210600	OIL DIP-STICK G3/8X80	1	
43	90392200	O-RING D.133.02X 2,62(3525)	1	
42	66160022	REAR COVER	1	
41	47200074	PUMP FOOT	2	
40	96710600	WASHER 10,2	1	
39	98204250	PLUG G1/4"x12	1	
38	99364400	SCREW M 10x18-5931	1	
37	97740500	CONNECTING ROD-PIN D.14X39	3	
36	66030001	CONNECTING ROD	3	
35	96710100	WASHER D. 10X28X0.5	3	
34	90358500	O-RING 10,82X1,78 (2043)	1	
33	66080370	PACKING RETAINER D.18	3	
32	90361600	O-RING 34,65X1,78 (2137)	3	
31	90265200	SEAL D.18X26X6,5 L.P.	3	
30	66216370	INTERMEDIATE RING D. 18	3	

Illustration Male shaft (key)

Pos.	Code	Description	Qty	Notes
29	90265500	PACKING 18.0x28x10.0 HP 66	3	
28	66040309	PISTON D.18X54	3	
27	90358400	O-RING D.10,82X1,78(2043)90SH3		
26	66219566	PISTON BOLT	3	
25	93185800		1	
24	98209900	PLUG G. 3/8X13 NICKEL	1	
23	98217900	PLUG G 1/2X10 NICKEL	1	
22	96751400	WASHER 21,5X27X1,5	1	
21	99382000		8	
20	66210166		3	
19	90511500	ANTI-EXTRUSION RING	3	
18	90384300	O-RING 17,86X2,62 (123)	3	
17	99368700		8	
16	66220336		1	
15	66210070		3	
14	90516500	ANTI-EXTR.RING D.24.7x29x1.5	3	
13	90385700	O-RING 23,81X2,62 (132)	6	
12	36712101	INTAKE/DELIVERY VALVE	6	
11	36202551	VALVE CAGE	6	
10	94737600	SPRING D. 9,4X14,8	6	
9	36203266	SPHERICAL VALVE	6	
8	36200366	VALVE SEAT	6	
7	90384100	O-RING 17,12X2,62 (3068)	6	
6	90359600		3	
5	90511800		3	
4	66210270		3	
3	98197200	PLUG G1/8X8 S.S.	3	
2	90357600		3	
1	66124936		1	

Illustration Male shaft (key) - Flushing

KIT 150	KIT 2	KIT 3	KIT 176	KIT 180



Fissare con Loctite 542 colore ROSSO cod.12.0062.00
 * Fix with red Loctite 542 cod. 12.0062.00

Lubrificare con grasso di vasellina cod. 12.0021.00
 ** Lubricate with vaseline grease cod. 12.0021.00

Illustration Male shaft (key) - Flushing

Pos.	Code	Description	Qty	Notes
KIT3	34000301	KIT 3 OIL SEAL D.30X55X7	1	
KIT2	34000201	KIT 2 OIL SEAL D. 22X32X5,5	1	
KIT180	34018001	KIT 180 SEALS D. 18	1	
KIT176	34017601	KIT176 COMPLETE SEALS D.18	1	
KIT150	34015001	KIT 150 INTAKE/DEL.VALVE	1	
61	47151022	OPEN SIDE COVER (47-66)	1	
60	91489200	KEY 8(h9)X7X35 UNI 6604/A	1	
59	66020035	CRANKSHAFT C.19 - D. 24	1	
58	90164800	OIL SEAL 30x55x7	1	
57	99188400	SCREW M 6x20 UNI 5931	4	
56	90391300	O-RING 67,95X2,62 (3268)	2	
55	47151222	SIDE CRANKCASE COVER FOR OIL GAUGE	1	
54	91838000	ROLLER BEARING NJ2206EC	2	
53	90387700	O-RING 39,34X2,62 (3156)	1	
52	70211801	OIL SIGHT GLASS	1	
51	90075600	CIRCLIP D.45 (ZJ45)	1	
50	99303900	SCREW M 8x16 UNI 5931	8	
49	66050066	PISTON GUIDE - S.S.	3	
48	90162500	OIL SEAL 22x32x5	3	
47	90912600	BUSHING 22X25X30	3	
46	66010022	CRANKCASE	1	
45	99309900	SCREW M 8x35 UNI 5931	6	
44	98210600	OIL DIP-STICK G3/8X80	1	
43	90392200	O-RING D.133.02X 2,62(3525)	1	
42	66160022	REAR COVER	1	
41	47200074	PUMP FOOT	2	
40	96710600	WASHER 10,2	1	
39	98204250	PLUG G1/4"x12	1	
38	99364400	SCREW M 10x18-5931	1	
37	97740500	CONNECTING ROD-PIN D.14X39	3	
36	66030001	CONNECTING ROD	3	
35	96710100	WASHER D. 10X28X0.5	3	
34	90358500	O-RING 10,82X1,78 (2043)	1	
33	66080370	PACKING RETAINER D.18	3	
32	90361600	O-RING 34,65X1,78 (2137)	3	
31	90265200	SEAL D.18X26X6,5 L.P.	3	
30	66220570		3	

Illustration Male shaft (key) - Flushing

Pos.	Code	Description	Qty	Notes
29	90265500	PACKING 18.0x28x10.0 HP 66	3	
28	66040309	PISTON D.18X54	3	
27	90358400	O-RING D.10,82X1,78(2043)90SH3		
26	66219566	PISTON BOLT	3	
25	93185800		1	
24	98209900	PLUG G. 3/8X13 NICKEL	1	
23	98217900	PLUG G 1/2X10 NICKEL	1	
22	96751400	WASHER 21,5X27X1,5	1	
21	99382000		8	
20	66210166		3	
19	90511500	ANTI-EXTRUSION RING	3	
18	90384300	O-RING 17,86X2,62 (123)	3	
17	99368700		8	
16	66220336		1	
15	66210070		3	
14	90516500	ANTI-EXTR.RING D.24.7x29x1.5	3	
13	90385700	O-RING 23,81X2,62 (132)	6	
12	36712101	INTAKE/DELIVERY VALVE	6	
11	36202551	VALVE CAGE	6	
10	94737600	SPRING D. 9,4X14,8	6	
9	36203266	SPHERICAL VALVE	6	
8	36200366	VALVE SEAT	6	
7	90384100	O-RING 17,12X2,62 (3068)	6	
6	90359600		3	
5	90511800		3	
4	66210270		3	
3	98197200	PLUG G1/8X8 S.S.	3	
2	90357600		3	
1	66125136		1	