



W1210



TECHNICAL INFORMATION

Flow (L/min)	10
Flow (US Gpm)	2,64
Rotation regime (rpm)	1450
Pressure (MPa)	12
Pressure (bar)	120
Pressure (psi)	1750
Power (hp)	3
Power (kW)	2,2
Overall dimensions L x l x h (mm)	177x175x130
Weight (kg)	5,2



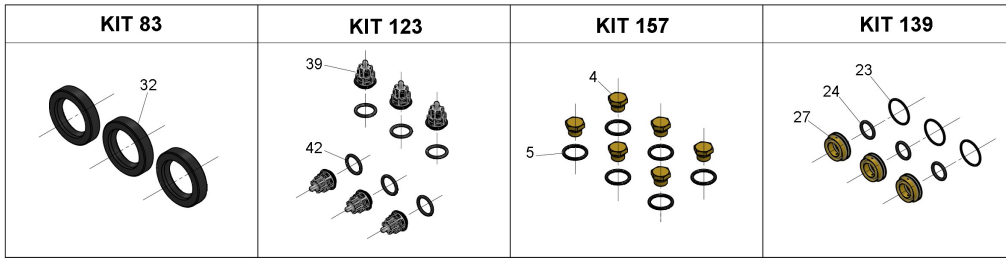
Documents

Male shaft (key) - GAS

Hollow shaft (key) + vers. B - GAS

VH Version

Illustration Male shaft (key) - GAS



Fissare con sigillareccordi rosso
cod. 12006200
*
Fix with red sealing fittings
cod. 12006200

Fissare con frenafili verde
cod. 12006100
**
Fix with green thread brakes
cod. 12006100

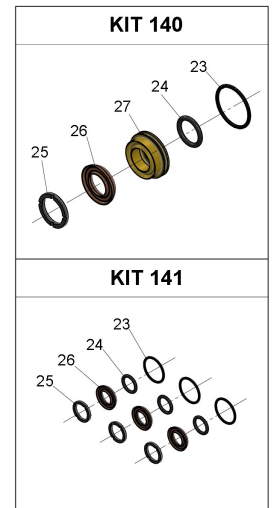
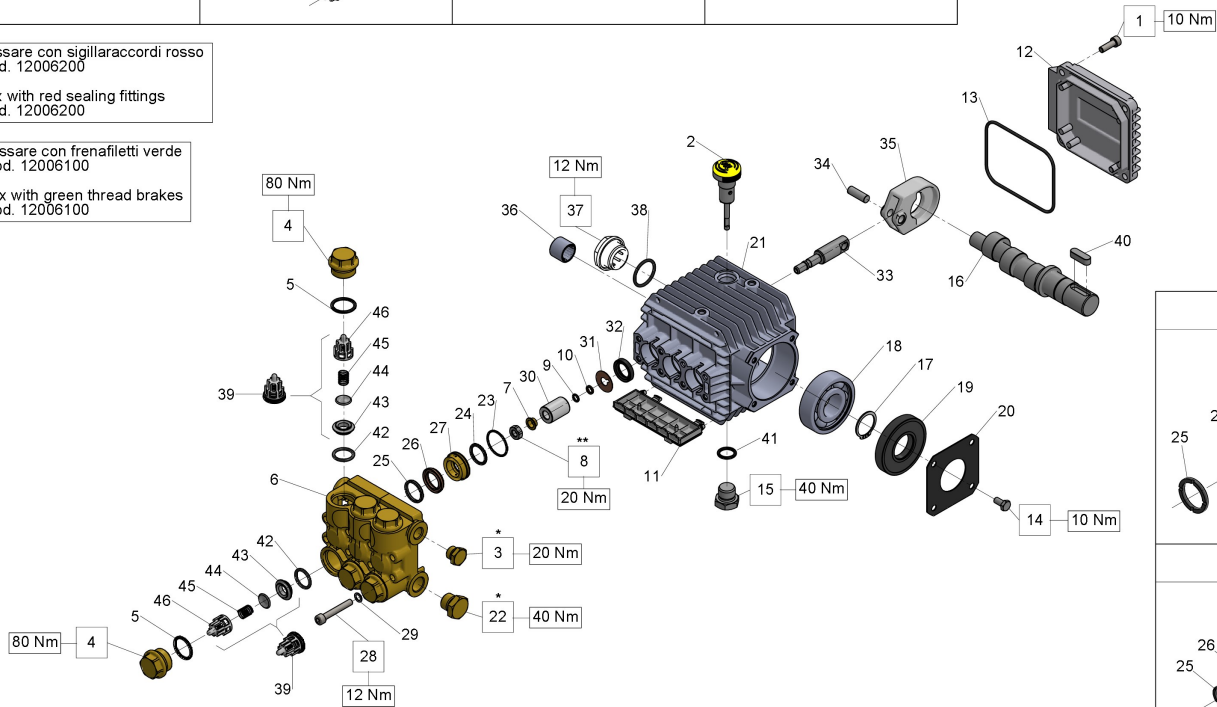


Illustration Male shaft (key) - GAS

Pos.	Code	Description	Qty	Notes
KIT83	34008301		1	
KIT157	34015701		1	
KIT141	34014101		1	
KIT140	34014001		1	
KIT139	34013901		1	
KIT123	34012301	KIT 123 INTAKE/DELIVERY VALVE	1	
46	36202551	VALVE CAGE	6	
45	94737600	SPRING D. 9,4X14,8	6	
44	36200176	VALVE PLATE	6	
43	36200366	VALVE SEAT	6	
42	90384100	O-RING 17,12X2,62 (3068)	6	
41	90383300	O-RING 13,95X2,62 (3056)	1	
40	91487700	KEY 8(h9)X7X25 UNI 6604/A	1	
39	36711501	INTAKE/DELIVERY VALVE	6	
38	90385900	O-RING 25,07X2,62 (3100)	1	
37	47221301	OIL SIGHT GLASS ASSY G3/4	1	
36	91801400		1	
35	51030122		3	
34	97731000		3	
33	51050056		3	
32	90156500		3	
31	96707000		3	
30	51040109		3	
29	96693800	WASHER 6,4X10X0,7	8	
28	99194300		8	
27	51080370		3	
26	90268100		3	
25	51100151		3	
24	90384300	O-RING 17,86X2,62 (123)	3	
23	90360400	O-RING 25,12X1,78 (2100)	3	
22	98210000	PLUG G3/8X13	1	
21	51010622		1	
20	50150074	CRANKCASE COVER	1	
19	90164100	OIL SEAL D.25X62X10	1	
18	91832800		1	
17	90063500	CIRCLIP D. 25 UNI 7435	1	
16	51020465		1	
15	98210050	PLUG G3/8x13 TE22	1	
14	99180700	SCREW M 6x12 UNI 5739	4	

Illustration Male shaft (key) - GAS

Pos.	Code	Description	Qty	Notes
13	90391700		1	
12	51160022		1	
11	51209051		1	
10	90502200	ANTI-EXTRUSION RING	3	
9	90357300	O-RING D. 5,28X1,78 (2021)	3	
8	92221600	NUT M8X13X5	3	
7	44211570	WASHER D. 8	3	
6	51120441		1	
5	90384700	O-RING 20,29X2,62(3081)	6	
4	98221600		6	
3	98204100	PLUG G1/4X9	1	
2	98210300	OIL DIP-STICK G3/8X51	1	
1	99186700	SCREW M 6x18 UNI 5931	4	

Illustration Hollow shaft (key) + vers. B - GAS

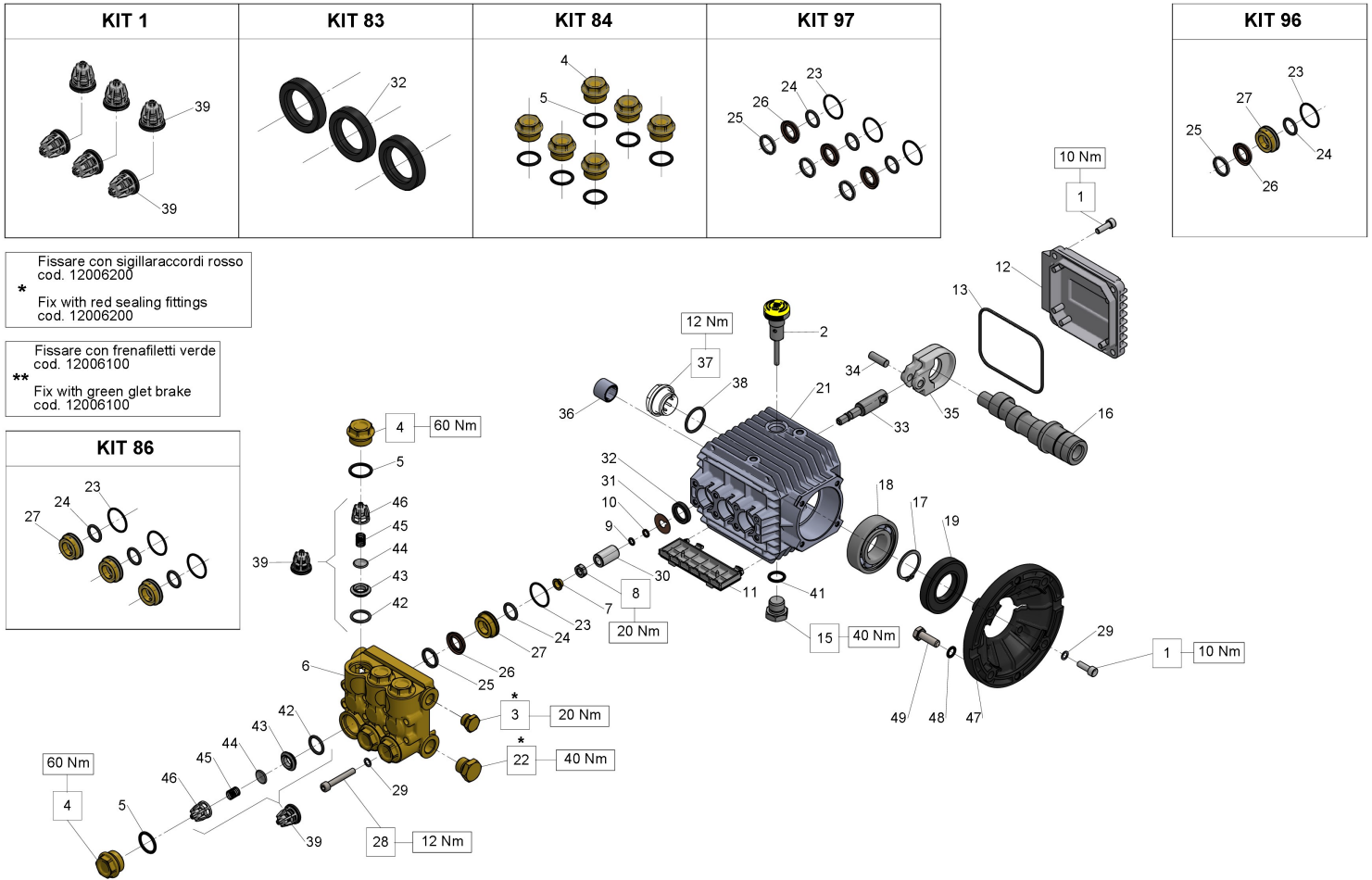
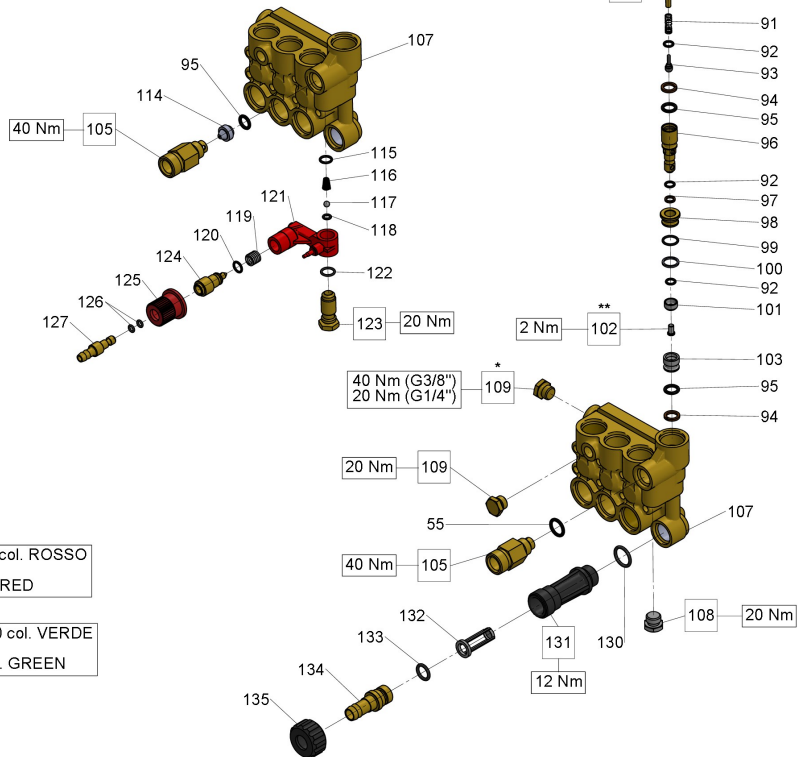
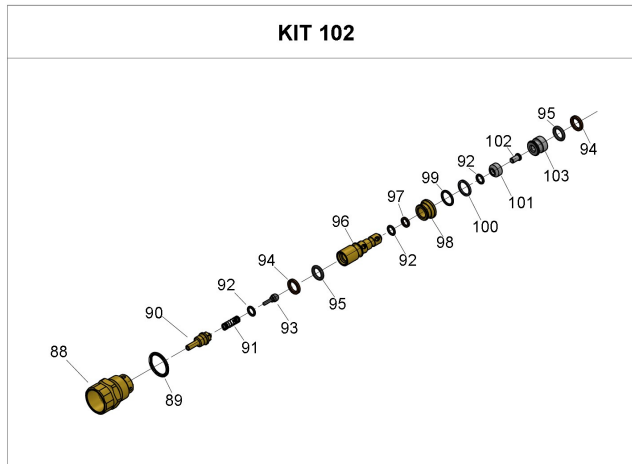
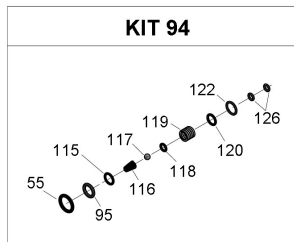


Illustration Hollow shaft (key) + vers. B - GAS

Pos.	Code	Description	Qty	Notes
KIT1	34000101	KIT 1 INTAKE/DELIVERY VALVE	1	
KIT97	34009701		1	
KIT96	34009601		1	
KIT86	34008601		1	
KIT84	34008401		1	
KIT83	34008301		1	
49	99306700	SCREW M 8x25 UNI 5739	4	
48	96701400	WASHER 8,4X13X0,8	4	
47	10034522		1	
46	36200251	VALVE CAGE	6	
45	94737600	SPRING D. 9,4X14,8	6	
44	36200176	VALVE PLATE	6	
43	36200366	VALVE SEAT	6	
42	90384100	O-RING 17,12X2,62 (3068)	6	
41	90383300	O-RING 13,95X2,62 (3056)	1	
39	36703201	VALVE ASSY.	6	
38	90385900	O-RING 25,07X2,62 (3100)	1	
37	47221301	OIL SIGHT GLASS ASSY G3/4	1	
36	91801400		1	
35	51030022		3	
34	97731000		3	
33	51050056		3	
32	90156500		3	
31	96707000		3	
30	51040009		3	
29	96693800	WASHER 6,4X10X0,7	12	
28	99194300		8	
27	51080070		3	
26	90262000	PACKING D. 15X25X5/3,1	3	
25	51100051	HEAD RING D. 15	3	
24	90383500	O-RING 15,08X2,62 (119)	3	
23	90360400	O-RING 25,12X1,78 (2100)	3	
22	98210000	PLUG G3/8X13	1	
21	51010622		1	
19	90165100	ANELLO RAD. 30.0x62.0x10.0	1	
18	91837300		1	
17	90066700	CIRCLIP D. 30 UNI 7435	1	
16	51021465		1	
15	98210050	PLUG G3/8x13 TE22	1	

Illustration Hollow shaft (key) + vers. B - GAS

Pos.	Code	Description	Qty	Notes
13	90391700		1	
12	51160022		1	
11	51209051		1	
10	90502200	ANTI-EXTRUSION RING	3	
9	90357300	O-RING D. 5,28X1,78 (2021)	3	
8	92221600	NUT M8X13X5	3	
7	44211570	WASHER D. 8	3	
6	51120041		1	
5	90384700	O-RING 20,29X2,62(3081)	6	
4	98221800		6	
3	98204100	PLUG G1/4X9	1	
2	98210300	OIL DIP-STICK G3/8X51	1	
1	99186700	SCREW M 6x18 UNI 5931	8	



Fissare con Loctite 542 col. ROSSO
 * Fix with Loctite 542 col. RED

Fissare con Loctite 270 col. VERDE
 ** Fix with Loctite 270 col. GREEN

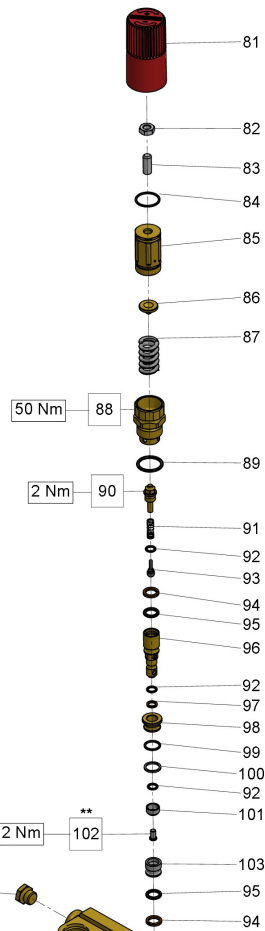


Illustration VH Version

Pos.	Code	Description	Qty	Notes
KIT102	34010201		1	
KIT94	34009401	KIT 94 CHIMJET KR/CONTROLSET	1	
135	92982800	WING NUT G3/4	1	
134	36256970		1	
133	90382800	O-RING 12,37X2,62 (3050)	1	
132	92892500	FILTER D. 12X35	1	
131	36318251	INLET NIPPLE G 3/4	1	
130	90384100	O-RING 17,12X2,62 (3068)	1	
127	36256670	CHEM. HOSE BARB FITTING	1	
126	90357000	O-RING 4,48X1,78 (2018)	2	
125	36256551	CHEM. REGULATION KNOB	1	
124	36256470	INJECTOR SHUTTER	1	
123	36256370	CHEM. INJECTOR VALVE SEAT	1	
122	90358500	O-RING 10,82X1,78 (2043)	1	
121	36318151	INJECTOR BODY	1	
120	90358000	O-RING 8,73X1,78 SPEC. (108)	1	
119	94738300	SPRING D.9,75X10	1	
118	90357200	O-RING 5,28X1,78 SPEC. (2021)	1	
117	97478200	BALL 7/32(5,556) STAINLESS	1	
116	94821700	TAPER SPRING D.4,3X7,3X11	1	
115	90358200	O-RING 9,25X1,78 (2037)	1	
114	10007666	NOZZLE DIAM. 2,2	1	
114	10015166	NOZZLE D. 2.0	1	
114	10043770		1	
109	98204100	PLUG G1/4X9	2	
108	98205700	PLUG M14X1,5X9	1	
107	51120541		1	
107	51120141		1	
105	10031870		1	
105	10007870	NIPPLE D. 3 G3/8	1	
105	10014770	NIPPLE G3/8 / M22X1,5 BORE D.3	1	
103	36316466	CONTROLSET W1 VALVE SEAT	1	
102	99150900	SCREW M5X7.5 STAINLESS	1	
101	36319066	SPHERICAL VALVE	1	
100	90507500		1	
99	90358900		1	
98	36316570		1	

Illustration VH Version

Pos.	Code	Description	Qty	Notes
97	90502500	ANTI-EXTRUSION RING (OR 106)	1	
96	36318970		1	
95	90382200	O-RING 9,92X2,62 SPEC. (112)	3	
94	90506500	ANTI-EXTRUSION RING (OR 112)	2	
93	36333151		1	
92	90357500	O-RING 6,75X1,78 SPEC. (2106)	3	
91	94733200		1	
90	36318870		1	
89	90384700	O-RING 20,29X2,62(3081)	1	
88	36318470		1	
87	94743600	SPRING Dm 15X35	1	
86	36316970	SPRING PLATE	1	
85	36318570	PRESSURE REG.SCREW	1	
84	90359800	O-RING 20,35X1,78 (2081)	1	
83	99305400	SCREW M8X20 UNI 5923 12.9	1	
82	92221800	NUT M8X1,25X5X13 UNI 5589	1	
81	36318751	PRESSURE REGULATION KNOB	1	
55	90383200	O-RING 13,95X2,62 SPEC. (3056)	1	