



E2B2808



TECHNICAL INFORMATION

| | |
|-----------------------------------|-----------------|
| Flow (L/min) | 7,5 |
| Flow (US Gpm) | 1,98 |
| Rotation regime (rpm) | 1450 |
| Pressure (MPa) | 27,5 |
| Pressure (bar) | 275 |
| Pressure (psi) | 4000 |
| Power (hp) | 5,4 |
| Power (kW) | 3,97 |
| Overall dimensions L x l x h (mm) | 241,5x215x129,5 |
| Weight (kg) | 7 |



Documents

Male shaft (key)

Hollow shaft (key) Ø28 - vers. B

Pump head with VH integrated valve

Illustration Male shaft (key)

| Pos. | Code | Description | Qty | Notes |
|--------|----------|------------------------------------|-----|-------|
| KIT275 | 34027501 | KIT 275 CPL.SEAL D.13 58 SERIE 1 | | |
| KIT272 | 34027201 | KIT 272 PACKING D.13 58 SERIES | 1 | |
| KIT271 | 34027101 | KIT 271 OIL SEAL D.15 58/59 SERIES | 1 | |
| KIT270 | 34027001 | KIT 270 VALVE PLUGS 58 SERIES | 1 | |
| KIT269 | 34026901 | KIT 269 INTAKE/DELIVERY VALVES | 1 | |
| 61 | 58150122 | COPERCHIO LATERALE | 1 | |
| 60 | 90067100 | CIRCLIP ZJ30 | 1 | |
| 59 | 90385900 | O-RING 25,07X2,62 (3100) | 1 | |
| 58 | 50200074 | PUMP FOOT | 2 | |
| 57 | 96701600 | WASHER 8,4 | 4 | |
| 56 | 99303700 | SCREW M 8x16-5739 | 4 | |
| 55 | 98196600 | PLUG G1/8X8 | 1 | |
| 54 | 90358500 | O-RING 10,82X1,78 (2043) | 1 | |
| 53 | 98204250 | PLUG G1/4"x12 | 1 | |
| 52 | 58160022 | REAR CRANKCASE COVER | 1 | |
| 51 | 90392550 | O-RING D.113.97X2.62 | 1 | |
| 50 | 98210500 | OIL DIPSTICK G3/8x51 D.7 | 1 | |
| 49 | 91489200 | KEY 8(h9)X7X35 UNI 6604/A | 1 | |
| 48 | 90164100 | OIL SEAL D.25X62X10 | 1 | |
| 47 | 90389800 | O-RING 56,82X2,62 (3225) | 1 | |
| 46 | 91833100 | BALL BEARING 6305 SKF | 2 | |
| 45 | 63021835 | CRANKSHAFT C.13 | 1 | |
| 44 | 53210851 | OIL LEVEL GAUGE | 1 | |
| 43 | 99183700 | SCREW M 6x14 UNI 5931 | 8 | |
| 42 | 90063500 | CIRCLIP D. 25 UNI 7435 | 1 | |
| 41 | 58030022 | CONNECTING ROD | 3 | |
| 40 | 97734000 | CONNECTING-ROD PIN D.10X29,5 | 3 | |
| 39 | 58050066 | PISTON GUIDE | 3 | |
| 38 | 90156550 | OIL SEAL D.15X24X5/7 | 3 | |
| 37 | 58210451 | PROTECTION | 1 | |
| 36 | 58010022 | PUMP CRANKCASE | 1 | |
| 35 | 58210582 | SPONGE GASKET D.3X94 | 1 | |
| 34 | 96699000 | WASHER D.7.5X23X0.5 | 3 | |
| 33 | 96751400 | WASHER 21,5X27X1,5 | 1 | |
| 32 | 98217600 | PLUG G1/2X10 | 1 | |
| 31 | 96738000 | WASHER 17,5X23X1,5 | 1 | |

Illustration Male shaft (key)

| Pos. | Code | Description | Qty | Notes |
|------|----------|--|-----|-------|
| 30 | 98210000 | PLUG G3/8X13 | 1 | |
| 29 | 58210670 | RING FOR SEAL D.13 | 3 | |
| 28 | 90260100 | PACKING D.13X20X5 LP | 3 | |
| 26 | 90360600 | O-RING 26,70X1,78 (2106) | 3 | |
| 25 | 58605601 | PACKING RETAINER+SLEEVE D.13 | 3 | |
| 24 | 90507650 | ANTI-EXTR.RING D.13X21X3 | 3 | |
| 23 | 90260200 | PACKING D.13X21X4 H.P. | 3 | |
| 22 | 44100251 | HEAD RING D. 13 | 3 | |
| 21 | 99317500 | SCREW M 8x60 UNI 5931 | 8 | |
| 20 | 98213700 | VALVE CAP M18X1,5X10 | 3 | |
| 19 | 90359300 | O-RING 15,60X1,78 (2062) | 3 | |
| 18 | 36719301 | OUTLET VALVE | 3 | |
| 17 | 36211151 | VALVE CAGE | 3 | |
| 16 | 94733300 | SPRING D.6.2x10.5 S.S. | 3 | |
| 15 | 36211276 | SPHERICAL VALVE | 3 | |
| 14 | 36211366 | VALVE SEAT | 3 | |
| 13 | 90367400 | O-RING D. 12X2 (120-20) | 3 | |
| 12 | 58040009 | PISTON D.13X42 | 3 | |
| 11 | 96690500 | WASHER D.5X11.5x0.4 INOX+FKM58/59/63HT | 3 | |
| 10 | 99169000 | SCREW M05X55 SPEC. A2-70 | 3 | |
| 9 | 98222600 | VALVE CAP M24X1,5X17 | 3 | |
| 8 | 90384700 | O-RING 20,29X2,62(3081) | 3 | |
| 7 | 36711501 | INTAKE/DELIVERY VALVE | 3 | |
| 6 | 90384100 | O-RING 17,12X2,62 (3068) | 3 | |
| 5 | 36200366 | VALVE SEAT | 3 | |
| 4 | 36200176 | VALVE PLATE | 3 | |
| 3 | 94737600 | SPRING D. 9,4X14,8 | 3 | |
| 2 | 36202551 | VALVE CAGE | 3 | |
| 1 | 58120041 | MANIFOLD FOR PISTON D.13 | 1 | |

Illustration Hollow shaft (key) Ø28 - vers. B

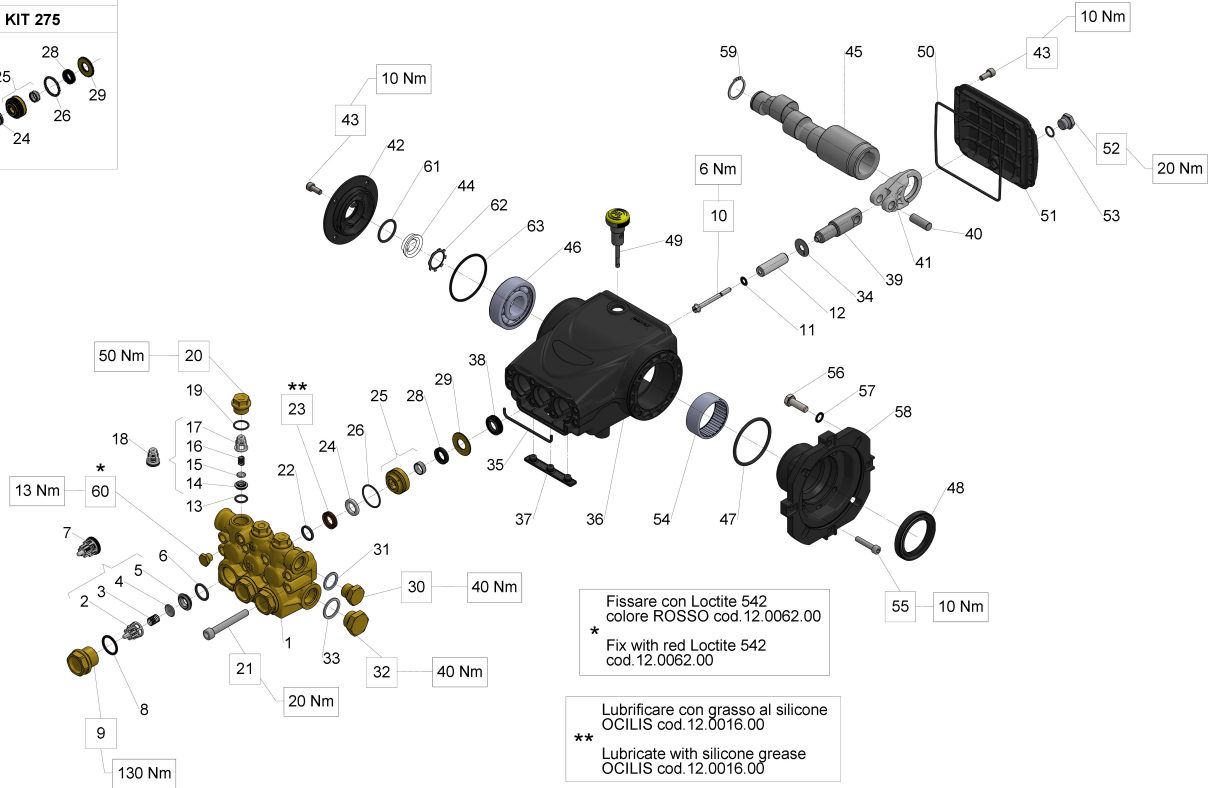
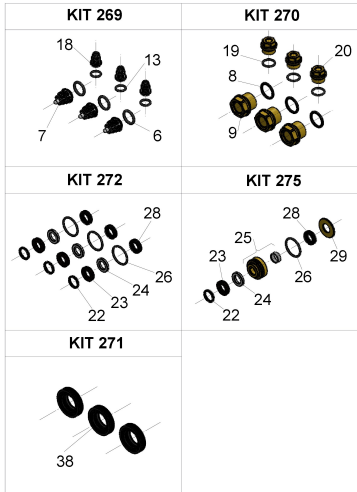


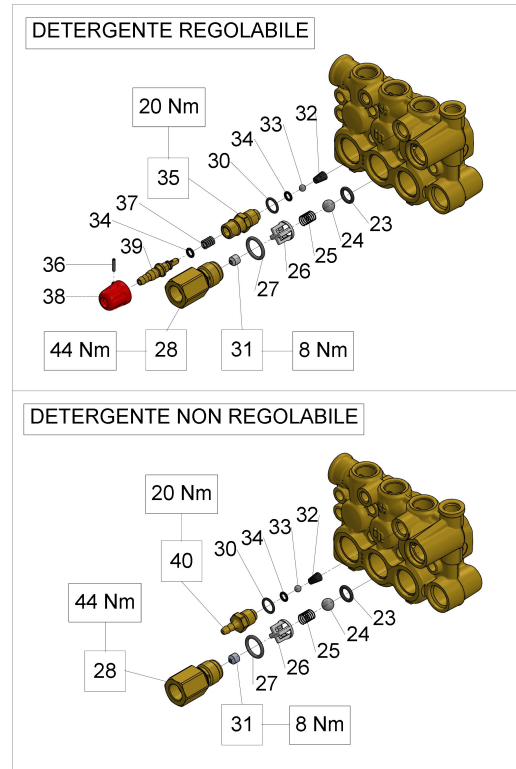
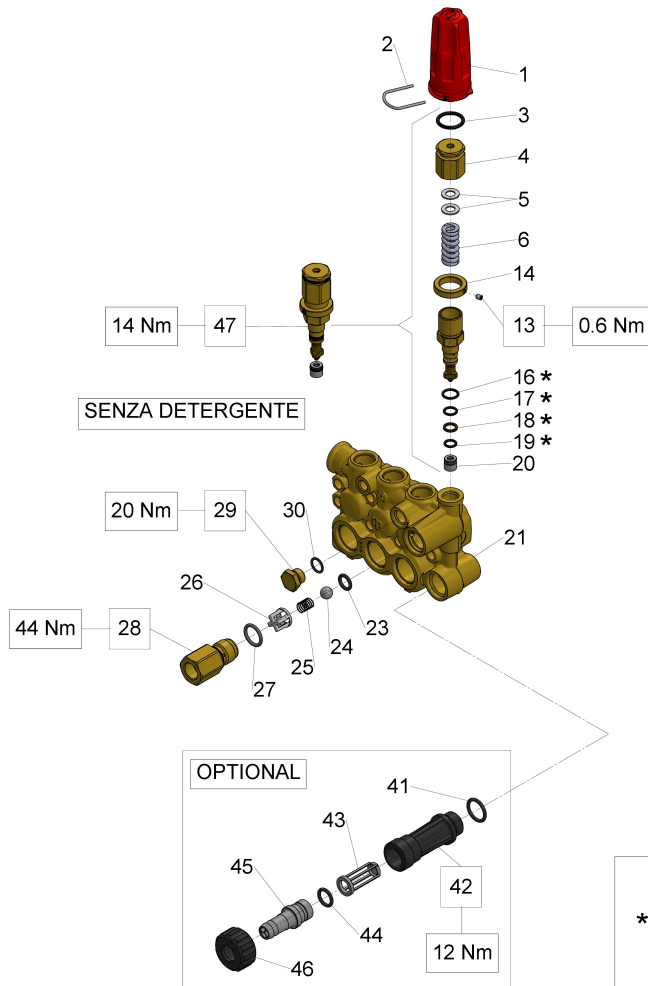
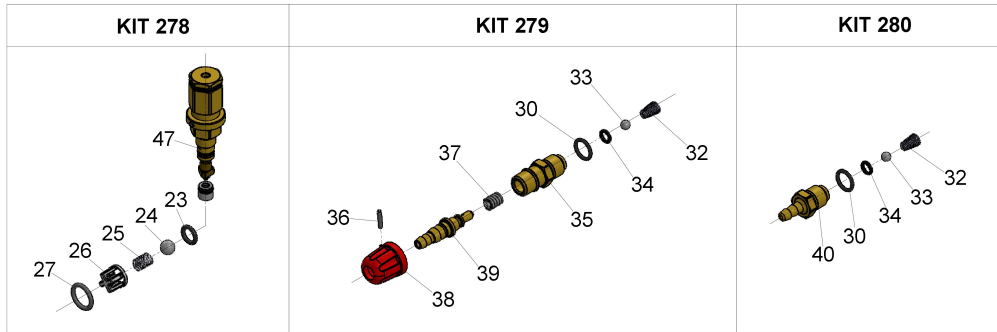
Illustration Hollow shaft (key) Ø28 - vers. B

| Pos. | Code | Description | Qty | Notes |
|--------|----------|------------------------------------|-----|-------|
| KIT275 | 34027501 | KIT 275 CPL.SEAL D.13 58 SERIE 1 | | |
| KIT272 | 34027201 | KIT 272 PACKING D.13 58 SERIES | 1 | |
| KIT271 | 34027101 | KIT 271 OIL SEAL D.15 58/59 SERIES | 1 | |
| KIT270 | 34027001 | KIT 270 VALVE PLUGS 58 SERIES | 1 | |
| KIT269 | 34026901 | KIT 269 INTAKE/DELIVERY VALVES | 1 | |
| 63 | 90389800 | O-RING 56,82X2,62 (3225) | 1 | |
| 62 | 90067100 | CIRCLIP ZJ30 | 1 | |
| 61 | 90385900 | O-RING 25,07X2,62 (3100) | 1 | |
| 60 | 98196600 | PLUG G1/8X8 | 1 | |
| 59 | 90063500 | CIRCLIP D. 25 UNI 7435 | 1 | |
| 58 | 10049422 | FLANGE FOR EL.MOT.B3B14 (EUR) | 1 | |
| 57 | 96701400 | WASHER 8,4X13X0,8 | 4 | |
| 56 | 99306700 | SCREW M 8x25 UNI 5739 | 4 | |
| 55 | 99191200 | SCREW M 6x30 UNI 5931 | 4 | |
| 54 | 91856800 | NEEDLE BEARING DHK 4520 | 1 | |
| 53 | 90358500 | O-RING 10,82X1,78 (2043) | 1 | |
| 52 | 98204250 | PLUG G1/4"x12 | 1 | |
| 51 | 58160022 | REAR CRANKCASE COVER | 1 | |
| 50 | 90392550 | O-RING D.113.97X2.62 | 1 | |
| 49 | 98210500 | OIL DIPSTICK G3/8x51 D.7 | 1 | |
| 48 | 90169000 | OIL SEAL D. 45X62X8 | 1 | |
| 47 | 90409700 | O-RING 55,56X3,53 (159) | 1 | |
| 46 | 91833100 | BALL BEARING 6305 SKF | 1 | |
| 45 | 63029565 | CRANKSHAFT C.13*HOLLOW D.28 | 1 | |
| 44 | 53210851 | OIL LEVEL GAUGE | 1 | |
| 43 | 99183700 | SCREW M 6x14 UNI 5931 | 8 | |
| 42 | 58150122 | COPERCHIO LATERALE | 1 | |
| 41 | 58030022 | CONNECTING ROD | 3 | |
| 40 | 97734000 | CONNECTING-ROD PIN D.10X29,5 | 3 | |
| 39 | 58050066 | PISTON GUIDE | 3 | |
| 38 | 90156550 | OIL SEAL D.15X24X5/7 | 3 | |
| 37 | 58210451 | PROTECTION | 1 | |
| 36 | 58010022 | PUMP CRANKCASE | 1 | |
| 35 | 58210582 | SPONGE GASKET D.3X94 | 1 | |
| 34 | 96699000 | WASHER D.7.5X23X0.5 | 3 | |
| 33 | 96751400 | WASHER 21,5X27X1,5 | 1 | |

Illustration Hollow shaft (key) Ø28 - vers. B

| Pos. | Code | Description | Qty | Notes |
|------|----------|--|-----|-------|
| 32 | 98217600 | PLUG G1/2X10 | 1 | |
| 31 | 96738000 | WASHER 17,5X23X1,5 | 1 | |
| 30 | 98210000 | PLUG G3/8X13 | 1 | |
| 29 | 58210670 | RING FOR SEAL D.13 | 3 | |
| 28 | 90260100 | PACKING D.13X20X5 LP | 3 | |
| 26 | 90360600 | O-RING 26,70X1,78 (2106) | 3 | |
| 25 | 58605601 | PACKING RETAINER+SLEEVE D.13 | 3 | |
| 24 | 90507650 | ANTI-EXTR.RING D.13X21X3 | 3 | |
| 23 | 90260200 | PACKING D.13X21X4 H.P. | 3 | |
| 22 | 44100251 | HEAD RING D. 13 | 3 | |
| 21 | 99317500 | SCREW M 8x60 UNI 5931 | 8 | |
| 20 | 98213700 | VALVE CAP M18X1,5X10 | 3 | |
| 19 | 90359300 | O-RING 15,60X1,78 (2062) | 3 | |
| 18 | 36719301 | OUTLET VALVE | 3 | |
| 17 | 36211151 | VALVE CAGE | 3 | |
| 16 | 94733300 | SPRING D.6.2x10.5 S.S. | 3 | |
| 15 | 36211276 | SPHERICAL VALVE | 3 | |
| 14 | 36211366 | VALVE SEAT | 3 | |
| 13 | 90367400 | O-RING D. 12X2 (120-20) | 3 | |
| 12 | 58040009 | PISTON D.13X42 | 3 | |
| 11 | 96690500 | WASHER D.5X11.5x0.4 INOX+FKM58/59/63HT | 3 | |
| 10 | 99169000 | SCREW M05X55 SPEC. A2-70 | 3 | |
| 9 | 98222600 | VALVE CAP M24X1,5X17 | 3 | |
| 8 | 90384700 | O-RING 20,29X2,62(3081) | 3 | |
| 7 | 36711501 | INTAKE/DELIVERY VALVE | 3 | |
| 6 | 90384100 | O-RING 17,12X2,62 (3068) | 3 | |
| 5 | 36200366 | VALVE SEAT | 3 | |
| 4 | 36200176 | VALVE PLATE | 3 | |
| 3 | 94737600 | SPRING D. 9,4X14,8 | 3 | |
| 2 | 36202551 | VALVE CAGE | 3 | |
| 1 | 58120041 | MANIFOLD FOR PISTON D.13 | 1 | |

Illustration Pump head with VH integrated valve



Se necessario, prima del montaggio lubrificare con grasso di vaselina cod.12.0021.00

* If necessary, lubricate with vaseline grease cod.12.0021.00 before assembly

Illustration Pump head with VH integrated valve

| Pos. | Code | Description | Qty | Notes |
|--------|----------|-------------------------------------|-----|-------|
| KIT280 | 34028001 | KIT 280 FIXED CHEM.INJECTOR 58-59 | 1 | |
| KIT279 | 34027901 | KIT 279 ADJUSTABLE CHEM. INJ. 58-59 | 1 | |
| KIT278 | 34027801 | KIT 278 BUILT-IN VALVE 58-59 | 1 | |
| 47 | 36605401 | H REG.VALVE ASSY. | 1 | |
| 46 | 92982800 | WING NUT G3/4 | 1 | |
| 45 | 36256951 | INLET HOSE BARB FITTING (PL.) | 1 | |
| 44 | 90382800 | O-RING 12,37X2,62 (3050) | 1 | |
| 43 | 92892500 | FILTER D. 12X35 | 1 | |
| 42 | 36318251 | INLET NIPPLE G 3/4 | 1 | |
| 41 | 90384100 | O-RING 17,12X2,62 (3068) | 1 | |
| 40 | 36349270 | CHEM. HOSE BARB FITTING | 1 | |
| 39 | 36334270 | SHUTTER WITH HOSE FITTING | 1 | |
| 38 | 36348451 | DETERGENT KNOB | 1 | |
| 37 | 94733400 | SPRING D.6.4X12.5 | 1 | |
| 36 | 97661500 | ELASTIC PIN D. 2X12 | 1 | |
| 35 | 36348270 | CHEM. HOSE BARB FITTING | 1 | |
| 34 | 90357300 | O-RING D. 5,28X1,78 (2021) | 2 | |
| 33 | 97478200 | BALL 7/32(5,556) STAINLESS | 1 | |
| 32 | 94821700 | TAPER SPRING D.4,3X7,3X11 | 1 | |
| 31 | 10079866 | INJECTOR NOZZLE D.2.20 ORANGE | 1 | |
| 31 | 10079566 | NOZZLE D. 2.00 | 1 | |
| 30 | 90358500 | O-RING 10,82X1,78 (2043) | 1 | |
| 29 | 98204100 | PLUG G1/4X9 | 1 | |
| 28 | 36348870 | NIPPLE D.3 M22X1.5 M | 1 | |
| 28 | 36348970 | NIPPLE D.3 G3/8F | 1 | |
| 28 | 36347970 | NIPPLE D.3 G3/8M | 1 | |
| 28 | 36348770 | NIPPLE D.3 3/8NPT M | 1 | |
| 28 | 36349070 | NIPPLE D.3 3/8NPT F | 1 | |
| 27 | 90383900 | O-RING 15,88X2,62 (121) | 1 | |
| 26 | 36310451 | VALVE GUIDE | 1 | |
| 25 | 94735500 | SPRING D. 8,5X12 | 1 | |
| 24 | 97483800 | BALL 13/32 (10,319) | 1 | |
| 23 | 90382300 | O-RING 9,92X2,62 (112) | 1 | |
| 21 | 58120341 | MANIFOLD D.13 W/VALVE | 1 | |
| 21 | 58120941 | MANIFOLD D.13*VALVE L | 1 | |
| 20 | 36348366 | REG. VALVE SEAT | 1 | |

Illustration Pump head with VH integrated valve

| Pos. | Code | Description | Qty | Notes |
|------|----------|--------------------------------------|-----|-------|
| 19 | 90357800 | O-RING 7,66X1,78 (2031) | 1 | |
| 18 | 90503800 | ANTI-EXTR.RING D.9X12X1.5 | 1 | |
| 17 | 90358100 | O-RING 8,73X1,78 - (108) | 1 | |
| 16 | 90358700 | O-RING D. 11,11X1,78 (114) | 1 | |
| 14 | 36347770 | MAX.PRESSURE NUT | 1 | |
| 13 | 99126700 | SCREW M4X5 UNI5929 S.S. | 1 | |
| 6 | 94739500 | SPRING D.11,3x34,5 | 1 | |
| 5 | 36348651 | SLIDE WASHER | 2 | |
| 4 | 36348170 | PRESSURE ADJUST SCREW | 1 | |
| 3 | 90384500 | O-RING 18,72X2,6 (3075) | 1 | |
| 2 | 10084666 | REGULATION KNOB YOKE | 1 | |
| 1 | 36350651 | REGULATION KNOB - RED S. 53-58-59 | 1 | |