



W952



TECHNICAL INFORMATION

Flow (L/min)	11,5
Flow (US Gpm)	3,04
Rotation regime (rpm)	1750
Pressure (MPa)	13,8
Pressure (bar)	138
Pressure (psi)	2000
Power (hp)	4
Power (kW)	2,94
Overall dimensions L x l x h (mm)	225x223x142,5
Weight (kg)	7,9



Documents

Male shaft (key)

Hollow shaft (key) Ø28,6 - vers. A

Pump head with VH integrated valve

Pump head with VK integrated valve

Illustration Male shaft (key)

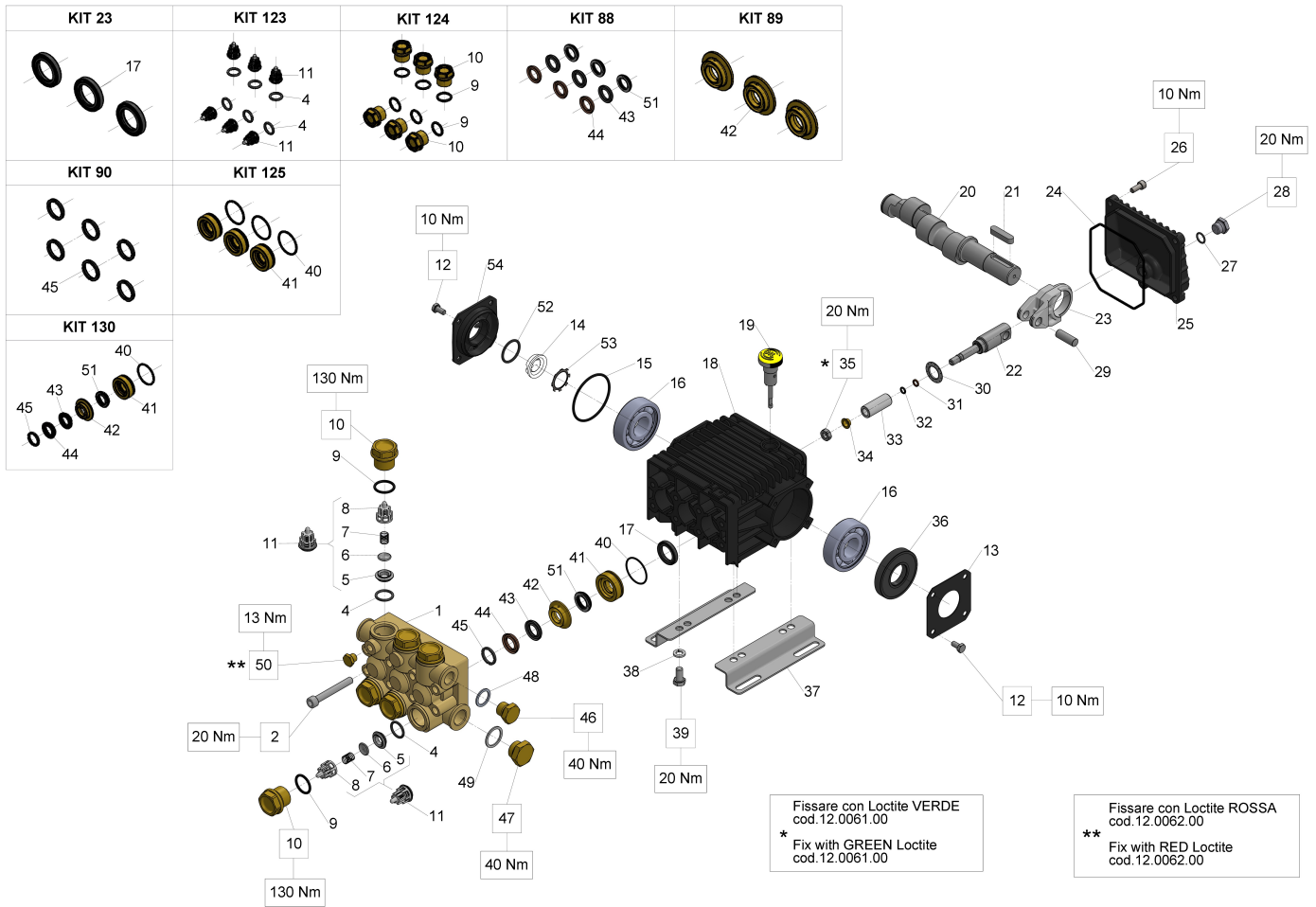


Illustration Male shaft (key)

Pos.	Code	Description	Qty	Notes
KIT130	34013001	KIT 130 CPL.SEAL PIST. D.15	1	
KIT125	34012501	KIT 125 PACKING RETAINER D.15	1	
KIT124	34012401	KIT 124 VALVE CAPS	1	
KIT123	34012301	KIT 123 INTAKE/DELIVERY VALVE	1	
KIT90	34009001	KIT 90 HEAD RING D. 15	1	
KIT89	34008901	KIT 89 INTERMEDIATE RING D. 15	1	
KIT88	34008801	KIT 88 PACKING D. 15	1	
KIT23	34002301	KIT 23 OIL SEAL D.20X30X5	1	
54	53150022	SIDE CRANKCASE COVER	1	
53	90067100	CIRCLIP ZJ30	1	
52	90385900	O-RING 25,07X2,62 (3100)	1	
51	90261700	LOW PRESS. PACKING 15X25X6	3	
50	98196600	PLUG G1/8X8	1	
49	96751400	WASHER 21,5X27X1,5	1	
48	96738000	WASHER 17,5X23X1,5	1	
47	98217600	PLUG G1/2X10	1	
46	98210000	PLUG G3/8X13	1	
45	51100051	HEAD RING D. 15	3	
44	90262000	PACKING D. 15X25X5/3,1	3	
43	90262200	RESTOP RING 15X25X5X3,1	3	
42	52216670	INTERMEDIATE RING D. 15	3	
41	44080070	PACKING RETAINER D. 15	3	
40	90361200	O-RING 31,47X1,78 (2125)	3	
39	99303700	SCREW M 8x16-5739	4	
38	96701600	WASHER 8,4	4	
37	50200074	PUMP FOOT	2	
36	90164100	OIL SEAL D.25X62X10	1	
35	92221600	NUT M8X13X5	3	
34	44211570	WASHER D. 8	3	
33	52040009	PISTON D. 15X37.5	3	
32	90357200	O-RING 5,28X1,78 SPEC. (2021)	3	
31	90502200	ANTI-EXTRUSION RING	3	
30	96735000	WASHER D.16X28X1	3	
29	97734000	CONNECTING-ROD PIN D.10X29,5	3	
28	98204250	PLUG G1/4"x12	1	
27	90358500	O-RING 10,82X1,78 (2043)	1	

Illustration Male shaft (key)

Pos.	Code	Description	Qty	Notes
26	99183700	SCREW M 6x14 UNI 5931	5	
25	44160022	REAR CRANKCASE COVER	1	
24	90392000	O-RING 101,27X2,62 (3400)	1	
23	44030022	CONNECTING ROD	3	
22	44050066	PISTON GUIDE	3	
21	91489200	KEY 8(h9)X7X35 UNI 6604/A	1	
20	44020635	CRANKSHAFT C.13 (D.24)	1	
19	98210300	OIL DIP-STICK G3/8X51	1	
18	44010022	CRANKCASE	1	
17	90161400	OIL SEAL 20x30x5	3	
16	91833100	BALL BEARING 6305 SKF	2	
15	90389800	O-RING 56,82X2,62 (3225)	1	
14	53210851	OIL LEVEL GAUGE	1	
13	50150074	CRANKCASE COVER	1	
12	99180700	SCREW M 6x12 UNI 5739	8	
11	36711501	INTAKE/DELIVERY VALVE	6	
10	98222600	VALVE CAP M24X1,5X17	6	
9	90384700	O-RING 20,29X2,62(3081)	6	
8	36202551	VALVE CAGE	6	
7	94737600	SPRING D. 9,4X14,8	6	
6	36200176	VALVE PLATE	6	
5	36200366	VALVE SEAT	6	
4	90384100	O-RING 17,12X2,62 (3068)	6	
2	99317500	SCREW M 8x60 UNI 5931	8	
1	44120041	MANIFOLD D. 15	1	

Illustration Hollow shaft (key) Ø28,6 - vers. A

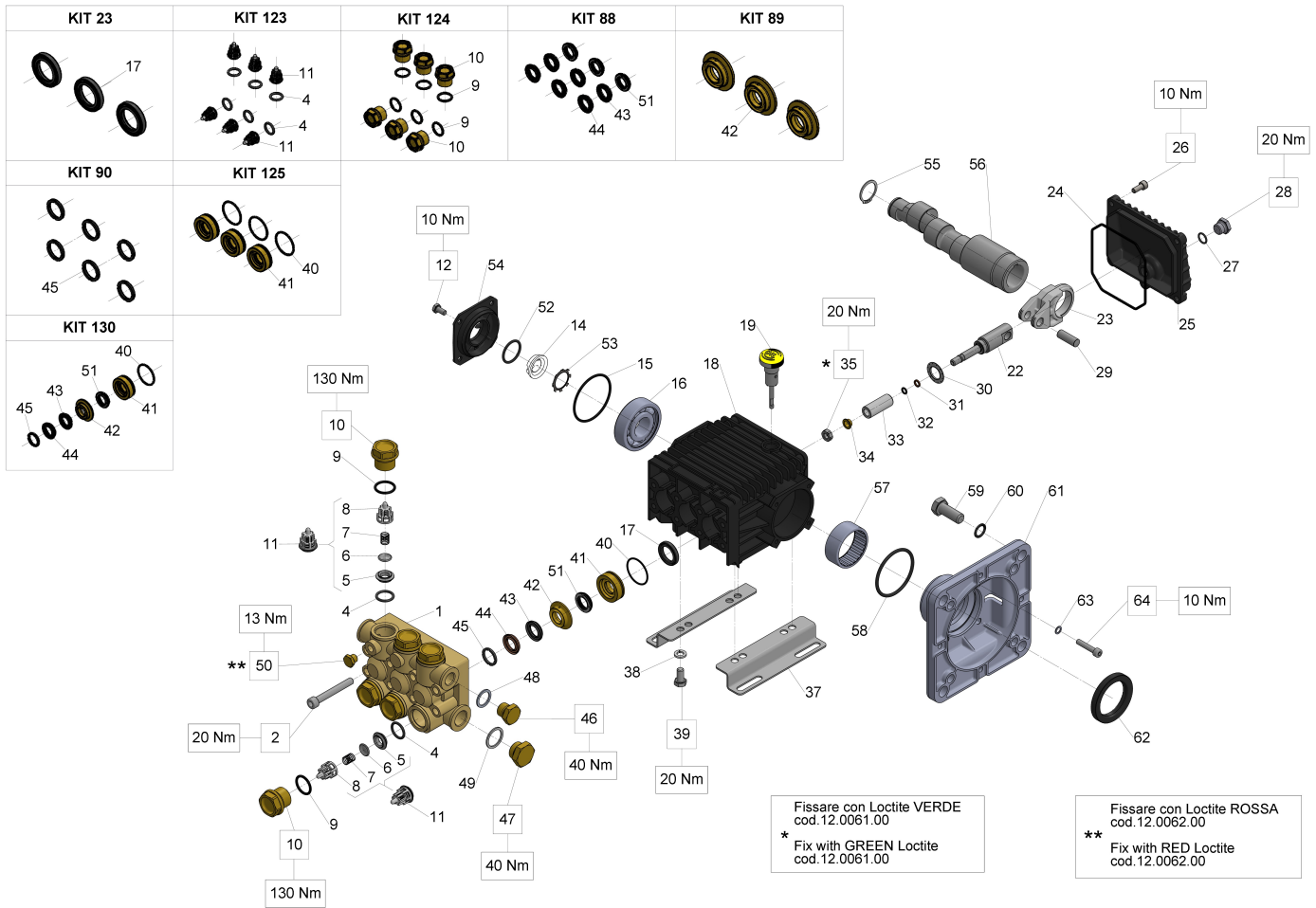


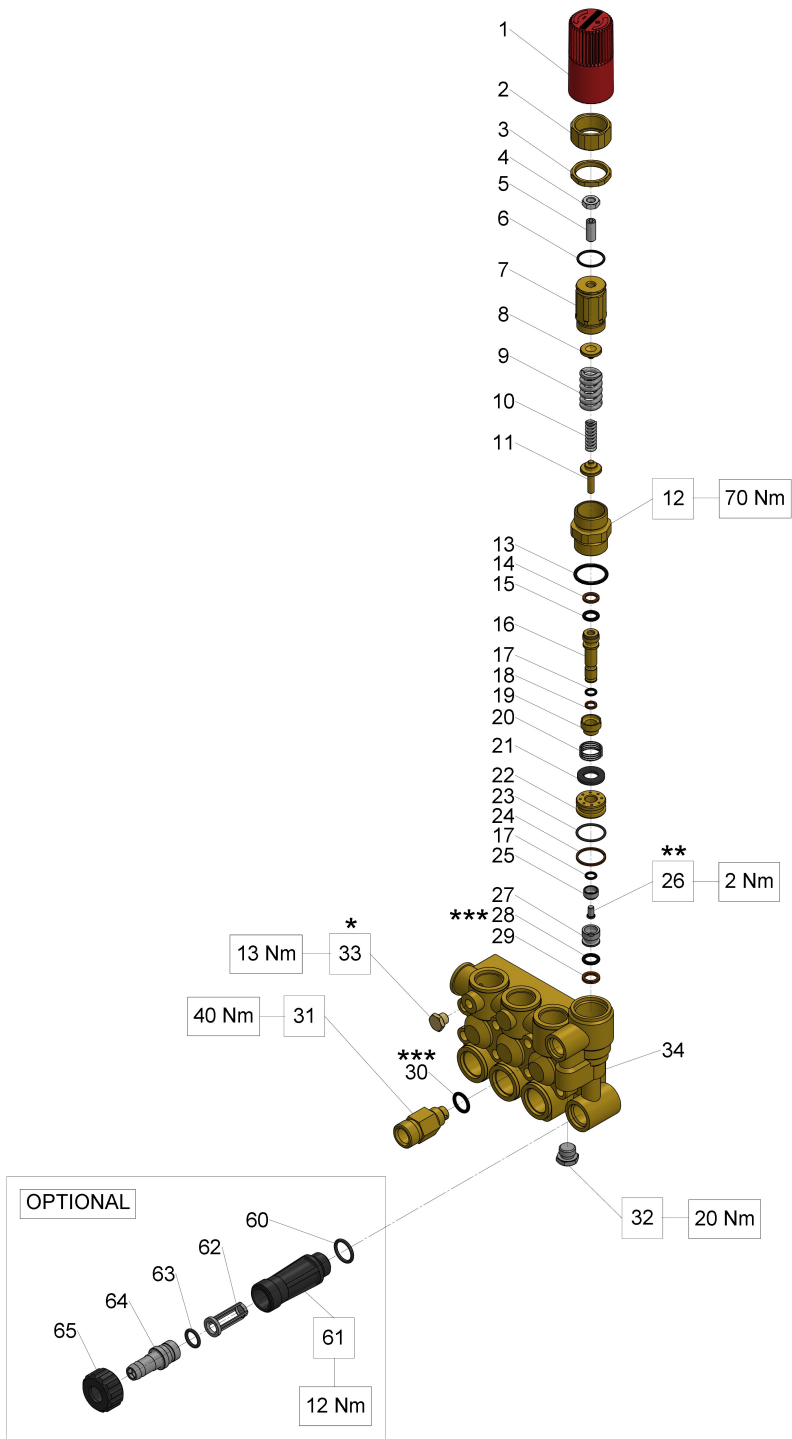
Illustration Hollow shaft (key) Ø28,6 - vers. A

Pos.	Code	Description	Qty	Notes
KIT90	34009001	KIT 90 HEAD RING D. 15	1	
KIT89	34008901	KIT 89 INTERMEDIATE RING D. 15	1	
KIT88	34008801	KIT 88 PACKING D. 15	1	
KIT23	34002301	KIT 23 OIL SEAL D.20X30X5	1	
KIT130	34013001	KIT 130 CPL.SEAL PIST. D.15	1	
KIT125	34012501	KIT 125 PACKING RETAINER D.15	1	
KIT124	34012401	KIT 124 VALVE CAPS	1	
KIT123	34012301	KIT 123 INTAKE/DELIVERY VALVE	1	
64	99191200	SCREW M 6x30 UNI 5931	4	
63	96693800	WASHER 6,4X10X0,7	4	
62	90169000	OIL SEAL D. 45X62X8	1	
61	10050422	FLANGE FOR EL.MOT.145-184TC(US	1	
60	96719500	WASHER 13X18X1,1	4	
59	99460000	SCREW 1/2-13X1-1/4"ANSI B18.2.	4	
58	90409700	O-RING 55,56X3,53 (159)	1	
57	91856800	NEEDLE BEARING DHK 4520	1	
56	44021665	CRANKSHAFT C.13(1-1/8" HOLLOW)	1	
55	90063500	CIRCLIP D. 25 UNI 7435	1	
54	53150022	SIDE CRANKCASE COVER	1	
53	90067100	CIRCLIP ZJ30	1	
52	90385900	O-RING 25,07X2,62 (3100)	1	
51	90261700	LOW PRESS. PACKING 15X25X6	3	
50	98196600	PLUG G1/8X8	1	
49	96751400	WASHER 21,5X27X1,5	1	
48	96738000	WASHER 17,5X23X1,5	1	
47	98217600	PLUG G1/2X10	1	
46	98210000	PLUG G3/8X13	1	
45	51100051	HEAD RING D. 15	3	
44	90262000	PACKING D. 15X25X5/3,1	3	
43	90262200	RESTOP RING 15X25X5X3,1	3	
42	52216670	INTERMEDIATE RING D. 15	3	
41	44080070	PACKING RETAINER D. 15	3	
40	90361200	O-RING 31,47X1,78 (2125)	3	
39	99303700	SCREW M 8x16-5739	4	
38	96701600	WASHER 8,4	4	
37	50200074	PUMP FOOT	2	

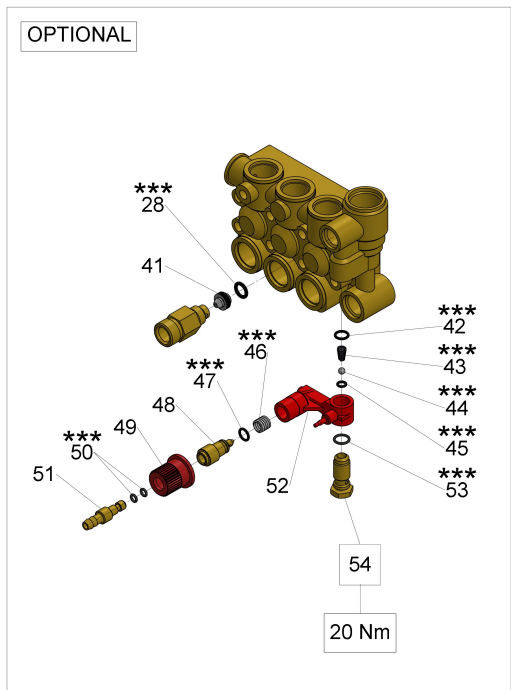
Illustration Hollow shaft (key) Ø28,6 - vers. A

Pos.	Code	Description	Qty	Notes
35	92221600	NUT M8X13X5	3	
34	44211570	WASHER D. 8	3	
33	52040009	PISTON D. 15X37.5	3	
32	90357200	O-RING 5,28X1,78 SPEC. (2021)	3	
31	90502200	ANTI-EXTRUSION RING	3	
30	96735000	WASHER D.16X28X1	3	
29	97734000	CONNECTING-ROD PIN D.10X29,5	3	
28	98204250	PLUG G1/4"x12	1	
27	90358500	O-RING 10,82X1,78 (2043)	1	
26	99183700	SCREW M 6x14 UNI 5931	5	
25	44160022	REAR CRANKCASE COVER	1	
24	90392000	O-RING 101,27X2,62 (3400)	1	
23	44030022	CONNECTING ROD	3	
22	44050066	PISTON GUIDE	3	
19	98210300	OIL DIP-STICK G3/8X51	1	
18	44010022	CRANKCASE	1	
17	90161400	OIL SEAL 20x30x5	3	
16	91833100	BALL BEARING 6305 SKF	1	
15	90389800	O-RING 56,82X2,62 (3225)	1	
14	53210851	OIL LEVEL GAUGE	1	
12	99180700	SCREW M 6x12 UNI 5739	4	
11	36711501	INTAKE/DELIVERY VALVE	6	
10	98222600	VALVE CAP M24X1,5X17	6	
9	90384700	O-RING 20,29X2,62(3081)	6	
8	36202551	VALVE CAGE	6	
7	94737600	SPRING D. 9,4X14,8	6	
6	36200176	VALVE PLATE	6	
5	36200366	VALVE SEAT	6	
4	90384100	O-RING 17,12X2,62 (3068)	6	
2	99317500	SCREW M 8x60 UNI 5931	8	
1	44120041	MANIFOLD D. 15	1	

Illustration Pump head with VH integrated valve



KIT 94 ***					KIT 137				
28	30	42	43	44	14	15	16	17	18
45	46	47	50	53	19	20	21	22	23
					24	25	26	27	*** 28
					29				



Fissare con Loctite 542 col.ROSSO
 * Fix with Loctite 542 col.RED

Fissare con Loctite 270 col.VERDE
 ** Fix with Loctite 270 col.GREEN

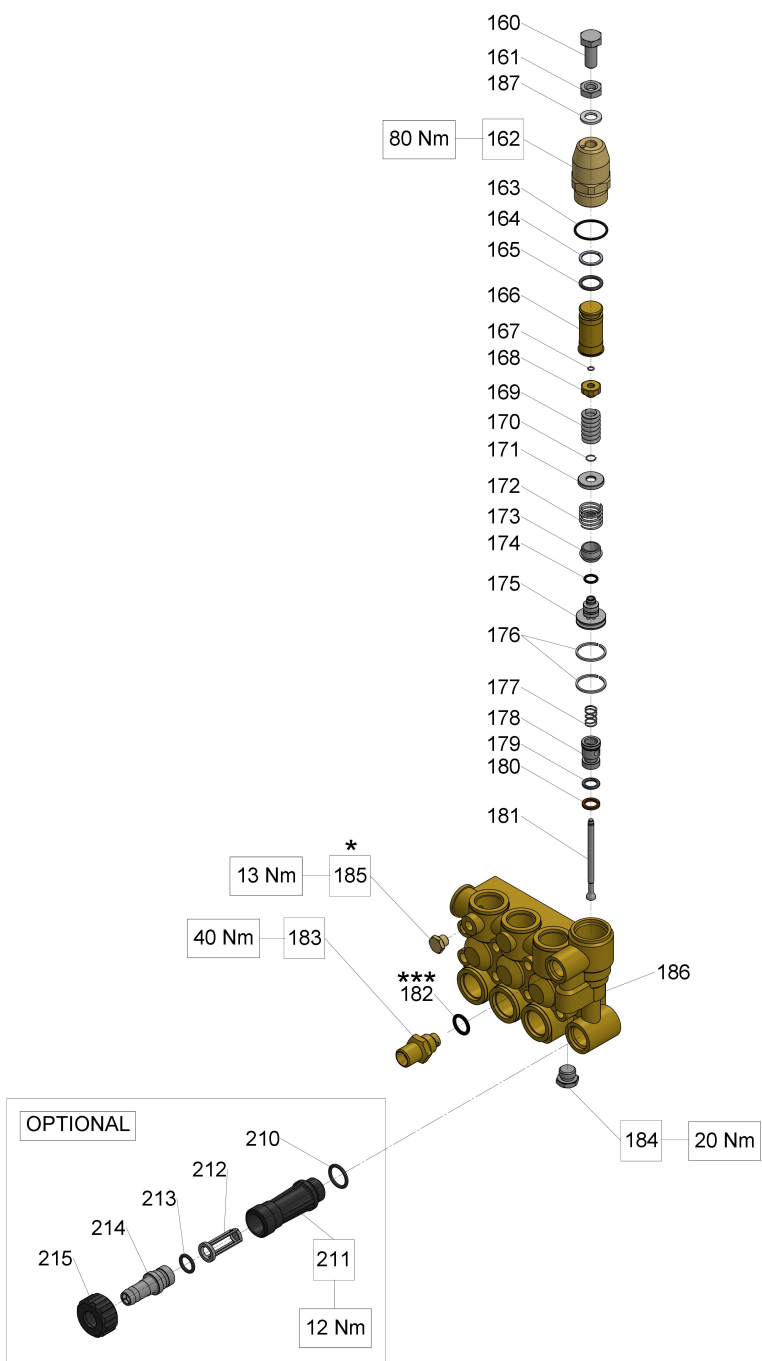
Illustration Pump head with VH integrated valve

Pos.	Code	Description	Qty	Notes
KIT94	34009401	KIT 94 CHIMJET KR/CONTROLSET	1	
KIT137	34013701	KIT 137 PRESSURE REG. VALVE	1	
65	92982800	WING NUT G3/4	1	
64	36256951	INLET HOSE BARB FITTING (PL.)	1	
63	90382800	O-RING 12,37X2,62 (3050)	1	
62	92892500	FILTER D. 12X35	1	
61	36318251	INLET NIPPLE G 3/4	1	
60	90384100	O-RING 17,12X2,62 (3068)	1	
54	36256370	CHEM. INJECTOR VALVE SEAT	1	
53	90358500	O-RING 10,82X1,78 (2043)	1	
52	36318151	INJECTOR BODY	1	
51	36256670	CHEM. HOSE BARB FITTING	1	
50	90357000	O-RING 4,48X1,78 (2018)	2	
49	36256551	CHEM. REGULATION KNOB	1	
48	36256470	INJECTOR SHUTTER	1	
47	90358000	O-RING 8,73X1,78 SPEC. (108)	1	
46	94738300	SPRING D.9,75X10	1	
45	90357200	O-RING 5,28X1,78 SPEC. (2021)	1	
44	97478200	BALL 7/32(5,556) STAINLESS	1	
43	94821700	TAPER SPRING D.4,3X7,3X11	1	
42	90358200	O-RING 9,25X1,78 (2037)	1	
41	10015166	NOZZLE D. 2.0	1	
41	10007666	NOZZLE DIAM. 2,2	1	
34	44120141	MANIFOLD W/VALVE (PIST.D.15)	1	
33	98196600	PLUG G1/8X8	1	
32	98205700	PLUG M14X1,5X9	1	
31	10007870	NIPPLE D. 3 G3/8	1	
31	10014770	NIPPLE G3/8 / M22X1,5 BORE D.3	1	
30	90383200	O-RING 13,95X2,62 SPEC. (3056)	1	
29	90506500	ANTI-EXTRUSION RING (OR 112)	1	
28	90382200	O-RING 9,92X2,62 SPEC. (112)	2	
27	36316466	CONTROLSET W1 VALVE SEAT	1	
26	99150900	SCREW M5X7.5 STAINLESS	1	

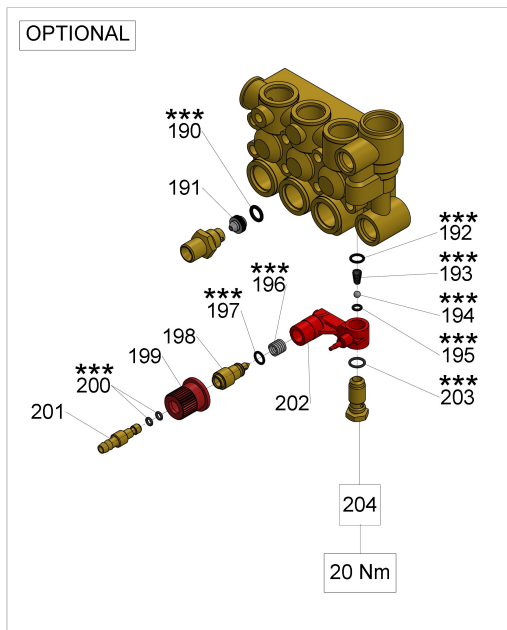
Illustration Pump head with VH integrated valve

Pos.	Code	Description	Qty	Notes
25	36319066	SPHERICAL VALVE	1	
24	90514400	ANTI-EXTRUSION RING	1	
23	90360000	O-RING 21,95X1,78 (2087)	1	
22	36322970	VALVE GUIDE	1	
21	36323151	FLAT VALVE (PLAST)	1	
20	94748500	SPRING D. 18,5X11	1	
19	36323070	SPACER	1	
18	90502500	ANTI-EXTRUSION RING (OR 106)	1	
17	90357500	O-RING 6,75X1,78 SPEC. (2106)	2	
16	36323470	CONTROL PISTON	1	
15	90382000	O-RING 9,13X2,62 SPEC. (109)	1	
14	90505200	ANTI-EXTRUSION RING (OR 109)	1	
13	90385700	O-RING 23,81X2,62 (132)	1	
12	36322870	GUIDE BUSH	1	
11	36323370	LOWER SPRING PLATE	1	
10	94734500	SPRING D. 7,6X29	1	
9	94743600	SPRING Dm 15X35	1	
8	36316970	SPRING PLATE	1	
7	36318570	PRESSURE REG.SCREW	1	
6	90359800	O-RING 20,35X1,78 (2081)	1	
5	99305400	SCREW M8X20 UNI 5923 12.9	1	
4	92221800	NUT M8X1,25X5X13 UNI 5589	1	
3	92293500	NUT M 28X1,5	1	
2	36318670	LOCKING NUT	1	
1	36318751	PRESSURE REGULATION KNOB	1	

Illustration Pump head with VK integrated valve



KIT 94 ***					KIT177	
182	190	192	193	194	167	
195	196	197	200	203	168	
					169	
					170	
					171	
					172	
					173	
					174	
					175	
					176	
					177	
					178	
					179	
					180	
					181	



Fissare con Loctite 542 col.ROSSO
 * Fix with Loctite 542 col.RED

Illustration Pump head with VK integrated valve

Pos.	Code	Description	Qty	Notes
KIT177	34017701	KIT 177 "K"UNL.VALVE INTERIOR1		
KIT94	34009401	KIT 94 CHIMJET KR/CONTROLSET	1	
215	92982800	WING NUT G3/4	1	
214	36256951	INLET HOSE BARB FITTING (PL.)	1	
213	90382800	O-RING 12,37X2,62 (3050)	1	
212	92892500	FILTER D. 12X35	1	
211	36318251	INLET NIPPLE G 3/4	1	
210	90384100	O-RING 17,12X2,62 (3068)	1	
204	36256370	CHEM. INJECTOR VALVE SEAT	1	
203	90358500	O-RING 10,82X1,78 (2043)	1	
202	36318151	INJECTOR BODY	1	
201	36256670	CHEM. HOSE BARB FITTING	1	
200	90357000	O-RING 4,48X1,78 (2018)	2	
199	36256551	CHEM. REGULATION KNOB	1	
198	36256470	INJECTOR SHUTTER	1	
197	90358000	O-RING 8,73X1,78 SPEC. (108)	1	
196	94738300	SPRING D.9,75X10	1	
195	90357200	O-RING 5,28X1,78 SPEC. (2021)	1	
194	97478200	BALL 7/32(5,556) STAINLESS	1	
193	94821700	TAPER SPRING D.4,3X7,3X11	1	
192	90358200	O-RING 9,25X1,78 (2037)	1	
191	10007666	NOZZLE DIAM. 2,2	1	
191	10015166	NOZZLE D. 2.0	1	
190	90382200	O-RING 9,92X2,62 SPEC. (112)	1	
187	96710300	WASHER D. 10,2X16X1.5	1	
186	44120141	MANIFOLD W/VALVE (PIST.D.15)	1	
185	98196600	PLUG G1/8X8	1	
184	98205700	PLUG M14X1,5X9	1	
183	10014770	NIPPLE G3/8 / M22X1,5 BORE D.3	1	
183	10007870	NIPPLE D. 3 G3/8	1	
182	90383200	O-RING 13,95X2,62 SPEC. (3056)	1	
181	36327566	VALVE ROD	1	
180	90506500	ANTI-EXTRUSION RING (OR 112)	1	

Illustration Pump head with VK integrated valve

Pos.	Code	Description	Qty	Notes
179	90382300	O-RING 9,92X2,62 (112)	1	
178	36327666	VALVE SEAT	1	
177	94737200	SPRING D. 9,3X15	1	
176	92771000	COMPRESSION RING D.25	2	
175	36327270	CONTROL PISTON	1	
174	90358100	O-RING 8,73X1,78 - (108)	1	
173	36327756	SHUTTER	1	
172	94748000	SPRING D. 18.2X16.5	1	
171	36327370	SPRING PLATE	1	
170	90006200	CIRCLIP D. 8 UNI 7433	1	
169	94740800	SPRING D. 12,5X26	1	
168	36327470	SPRING PLATE	1	
167	90005900	CIRCLIP D. 5 UNI 7433	1	
166	36327170	STROKE STOPPER	1	
165	90383500	O-RING 15,08X2,62 (119)	1	
164	90509000	ANTI-EXTRUSION RING	1	
163	90360400	O-RING 25,12X1,78 (2100)	1	
162	36327070	UPPER VALVE BODY	1	
161	92236800	NUT M10x1,25x17x8 UNI 5588	1	
160	99366300	SCREW M 10x25 UNI 5740	1	