



SS7091H



TECHNICAL INFORMATION

Flow (L/min)	100
Flow (US Gpm)	26,4
Rotation regime (rpm)	1450
Pressure (MPa)	10
Pressure (bar)	100
Pressure (psi)	1450
Power (hp)	26
Power (kW)	19,1
Overall dimensions L x l x h (mm)	387x340,5x208
Weight (kg)	43



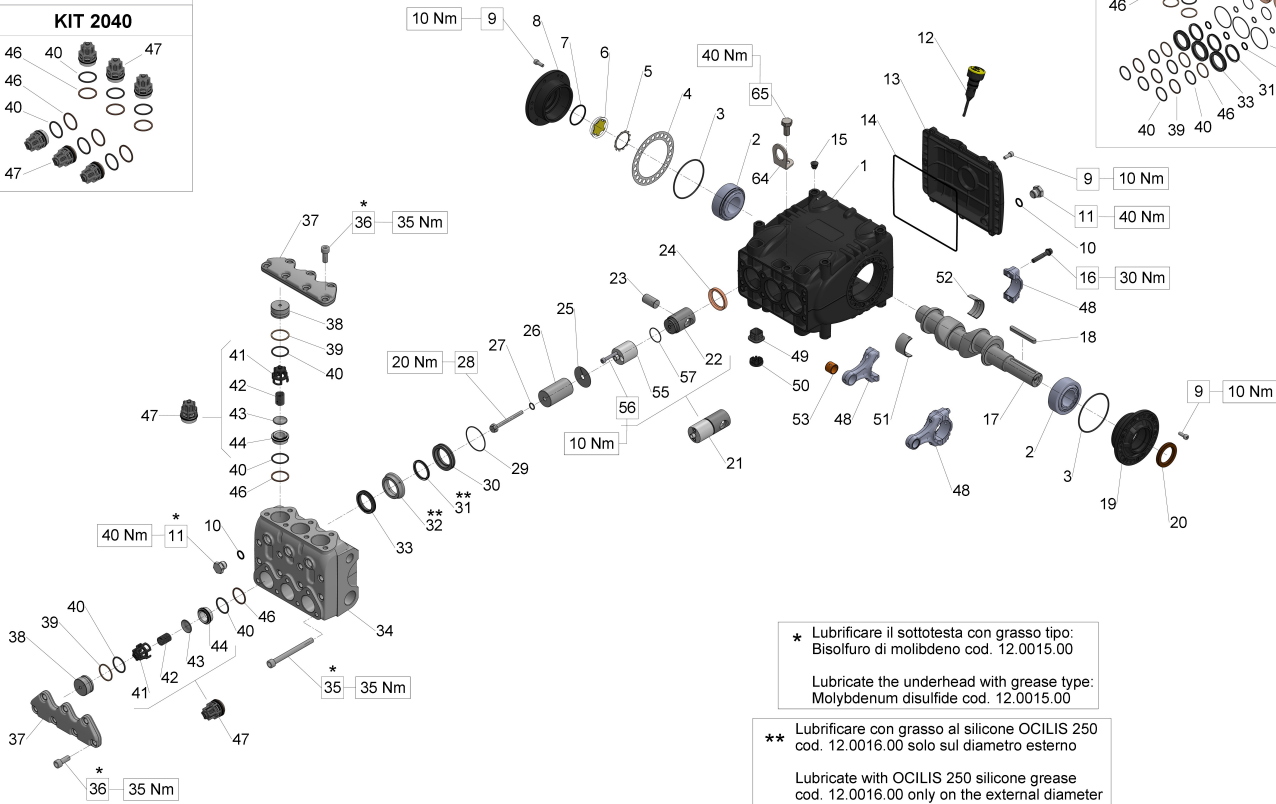
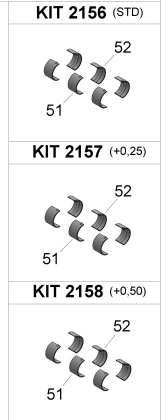
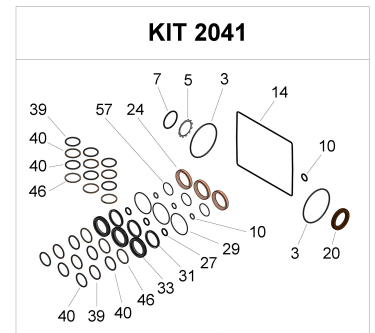
Documents

Male shaft (key) - GAS

Male shaft (key) - NPT

Male shaft (key) + flange A - GAS

Illustration Male shaft (key) - GAS



* Lubrificare il sottotesta con grasso tipo:
Bisolfuro di molibdeno cod. 12.0015.00

Lubricate the underhead with grease type:
Molybdenum disulfide cod. 12.0015.00

** Lubrificare con grasso al silicone OCILIS 250
cod. 12.0016.00 solo sul diametro esterno

Lubricate with OCILIS 250 silicone grease
cod. 12.0016.00 only on the external diameter

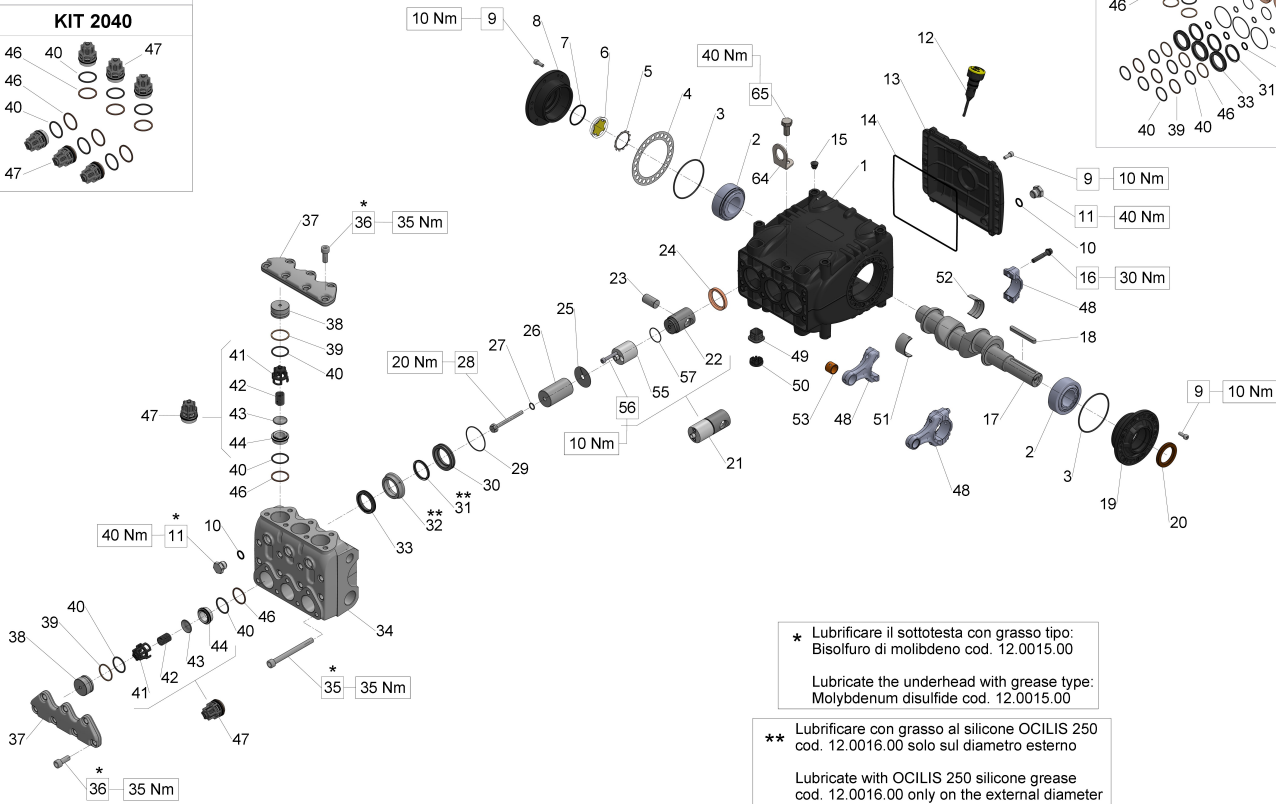
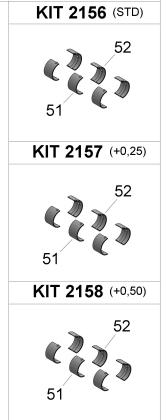
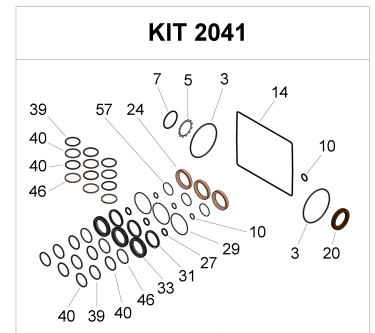
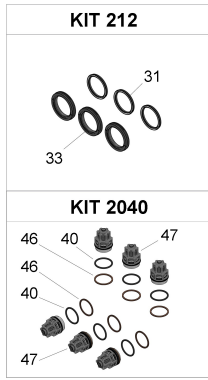
Illustration Male shaft (key) - GAS

Pos.	Code	Description	Qty	Notes
KIT2158	34215801	KIT 2158*CONROD BUSHINGS +0,50	1	
KIT2157	34215701	KIT 2157*CONROD BUSHINGS +0,25	1	
KIT2156	34215601	KIT 2156*CONROD BUSHING	1	
KIT212	34021201		1	
KIT2041	34204101		1	
KIT2040	34204001		1	
65	99426600	VITE TE M12X25-UNI5739 ZINC.	1	
64	71223074	STAFFA DI SOLLEVAMENTO	1	
57	90352800	O-RING D. 29.00x1.50 NBR 70SH 3		
56	99192500	SCREW M06X35 5931 A2-70	6	
55	70050266	PISTON GUIDE ROD	3	
53	90910000	CONROD BUSHING (SMALL END) 3 S.70		
52	90922300	LOWER HALF CONROD BUSHING 3 (BIG END) S.70		
52	90922500	LOWER HALF CONROD BUSHING 1 +0.50 (BIG END) S.70		
52	90922400	LOWER HALF CONROD BUSHING 1 +0.25 (BIG END) S.70		
51	90922000	UPPER HALF CONROD BUSHING 3 (BIG END) S.70		
51	90922200	UPPER HALF CONROD BUSHING 1 +0.5 (BIG END) S.70		
51	90922100	UPPER HALF CONROD BUSHING 1 +0.25 (BIG END) S.70		
50	71225951	PLUG CAP	3	
49	70222551	CRANKCASE PLUG	6	
48	70030501	CONNECTING ROD COMPLETE	3	
47	36715401		6	
46	90517800		6	
44	36207066		6	
43	36201076	VALVE PLATE	6	
42	94745000	SPRING D. 16X27,5	6	
41	36204705	VALVE CAGE S.S. (70 SERIES)	6	
40	90386500	O-RING 29,82X2,62 (3118)	12	
39	90518000	ANTI-EXTR.RING D.32.4X36.5X1.5	6	
38	70221666		6	
37	70221536		2	

Illustration Male shaft (key) - GAS

Pos.	Code	Description	Qty	Notes
36	99367000		14	
35	99381800		8	
34	70123536		1	
33	90241000		3	
32	70221766		3	
31	90240000		3	
30	70081066		3	
29	90362600	O-RING D. 50,52X1,78 (2200)	3	
28	70221866		3	
27	90367100		3	
26	70040509	PISTON D.36X63	3	
25	96709900	WASHER D.10X45	3	
24	90167700	OIL SEAL D.36X47X7	3	
23	97742000	GUDGEON PIN D.18X36	3	
22	70050115	PISTON GUIDE T.N.	3	
21	70606801	PISTON GUIDE ASSY	3	
20	90166800	OIL SEAL D.35X52X7	1	
19	70150022	BEARING COVER (PTO SIDE)	1	
18	91490000	KEY 8h9X7X70 UNI 6604/A	1	
17	70020035		1	
16	99312300	CONN.ROD BOLT M8X1X42	6	
15	98200500	PLUG D. 15	1	
14	90394200	OR D.190.17X2.62 NBR 70SH	1	
13	70160022		1	
12	98211500	OIL DIPSTICK D.21,5X70	1	
11	98210066	PLUG G 3/8 X 13 STAINLESS	4	
10	90383300	O-RING 13,95X2,62 (3056)	4	
9	99185200		20	
8	70150122	BEARING COVER (OIL GLASS SIDE)	1	
7	90387700	O-RING 39,34X2,62 (3156)	1	
6	70211801	OIL SIGHT GLASS	1	
5	90075600	CIRCLIP D.45 (ZJ45)	1	
4	70220381	SHIM 0.25 MM.	1	
4	70220081	SHIM 0.1 MM.	1	
3	90391500	O-RING D. 80.6X2.62 (3318)	2	
2	91847700	TAPER ROLLER BEARING 33207/Q	2	
1	70010022	CRANKCASE	1	

Illustration Male shaft (key) - NPT



* Lubrificare il sottotesta con grasso tipo:
Bisolfuro di molibdeno cod. 12.0015.00
Lubricate the underhead with grease type:
Molybdenum disulfide cod. 12.0015.00

** Lubrificare con grasso al silicone OCILIS 250
cod. 12.0016.00 solo sul diametro esterno
Lubricate with OCILIS 250 silicone grease
cod. 12.0016.00 only on the external diameter

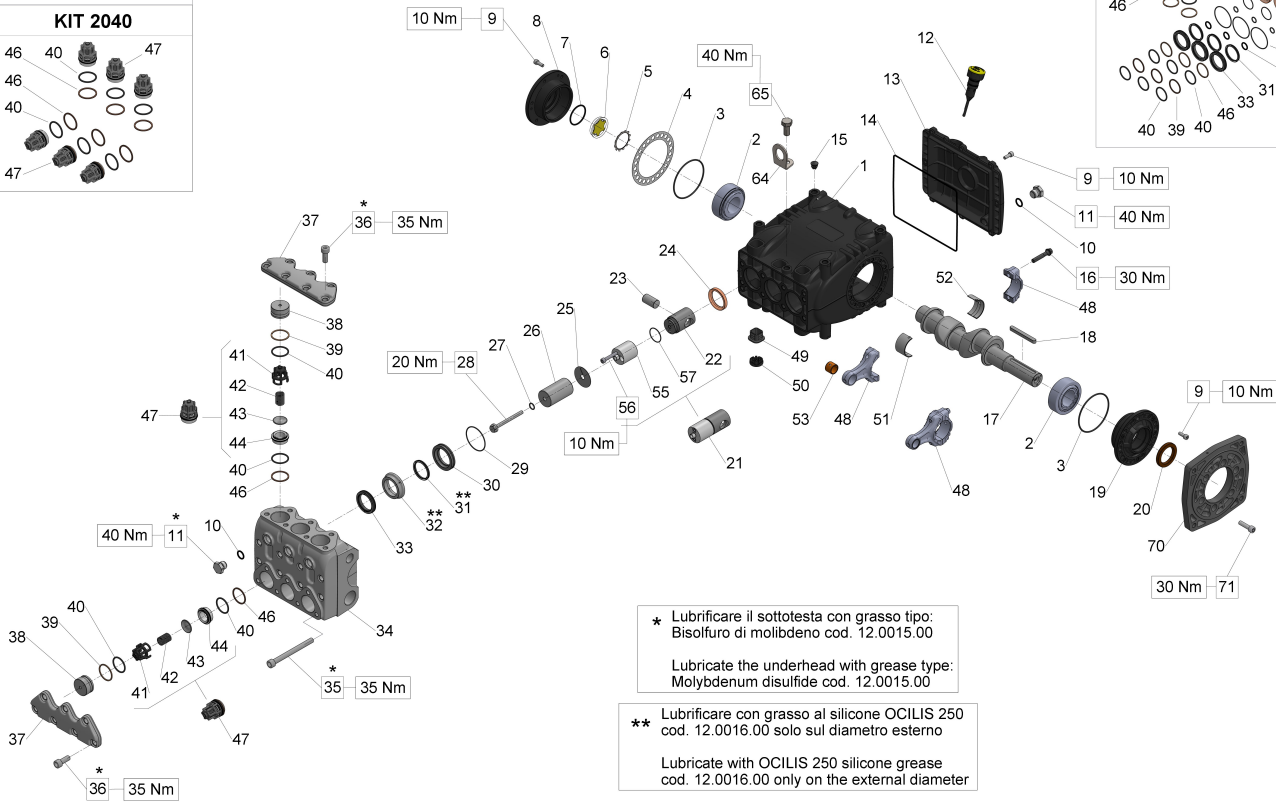
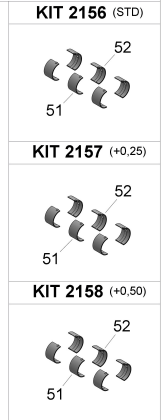
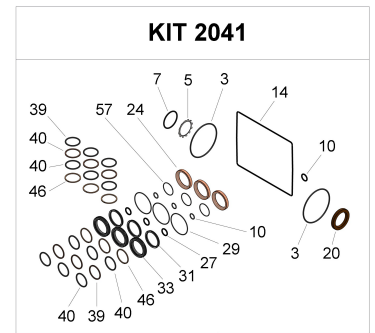
Illustration Male shaft (key) - NPT

Pos.	Code	Description	Qty	Notes
KIT2158	34215801	KIT 2158*CONROD BUSHINGS +0,50	1	
KIT2157	34215701	KIT 2157*CONROD BUSHINGS +0,25	1	
KIT2156	34215601	KIT 2156*CONROD BUSHING	1	
KIT212	34021201		1	
KIT2041	34204101		1	
KIT2040	34204001		1	
65	99426600	VITE TE M12X25-UNI5739 ZINC.	1	
64	71223074	STAFFA DI SOLLEVAMENTO	1	
57	90352800	O-RING D. 29.00x1.50 NBR 70SH 3		
56	99192500	SCREW M06X35 5931 A2-70	6	
55	70050266	PISTON GUIDE ROD	3	
53	90910000	CONROD BUSHING (SMALL END) 3 S.70		
52	90922300	LOWER HALF CONROD BUSHING 3 (BIG END) S.70		
52	90922500	LOWER HALF CONROD BUSHING 1 +0.50 (BIG END) S.70		
52	90922400	LOWER HALF CONROD BUSHING 1 +0.25 (BIG END) S.70		
51	90922000	UPPER HALF CONROD BUSHING 3 (BIG END) S.70		
51	90922200	UPPER HALF CONROD BUSHING 1 +0.5 (BIG END) S.70		
51	90922100	UPPER HALF CONROD BUSHING 1 +0.25 (BIG END) S.70		
50	71225951	PLUG CAP	3	
49	70222551	CRANKCASE PLUG	6	
48	70030501	CONNECTING ROD COMPLETE	3	
47	36715401		6	
46	90517800		6	
44	36207066		6	
43	36201076	VALVE PLATE	6	
42	94745000	SPRING D. 16X27,5	6	
41	36204705	VALVE CAGE S.S. (70 SERIES)	6	
40	90386500	O-RING 29,82X2,62 (3118)	12	
39	90518000	ANTI-EXTR.RING D.32.4X36.5X1.5	6	
38	70221666		6	
37	70221536		2	

Illustration Male shaft (key) - NPT

Pos.	Code	Description	Qty	Notes
36	99367000		14	
35	99381800		8	
34	70123636		1	
33	90241000		3	
32	70221766		3	
31	90240000		3	
30	70081066		3	
29	90362600	O-RING D. 50,52X1,78 (2200)	3	
28	70221866		3	
27	90367100		3	
26	70040509	PISTON D.36X63	3	
25	96709900	WASHER D.10X45	3	
24	90167700	OIL SEAL D.36X47X7	3	
23	97742000	GUDGEON PIN D.18X36	3	
22	70050115	PISTON GUIDE T.N.	3	
21	70606801	PISTON GUIDE ASSY	3	
20	90166800	OIL SEAL D.35X52X7	1	
19	70150022	BEARING COVER (PTO SIDE)	1	
18	91490000	KEY 8h9X7X70 UNI 6604/A	1	
17	70020035		1	
16	99312300	CONN.ROD BOLT M8X1X42	6	
15	98200500	PLUG D. 15	1	
14	90394200	OR D.190.17X2.62 NBR 70SH	1	
13	70160022		1	
12	98211500	OIL DIPSTICK D.21,5X70	1	
11	98210066	PLUG G 3/8 X 13 STAINLESS	4	
10	90383300	O-RING 13,95X2,62 (3056)	4	
9	99185200		20	
8	70150122	BEARING COVER (OIL GLASS SIDE)	1	
7	90387700	O-RING 39,34X2,62 (3156)	1	
6	70211801	OIL SIGHT GLASS	1	
5	90075600	CIRCLIP D.45 (ZJ45)	1	
4	70220381	SHIM 0.25 MM.	1	
4	70220081	SHIM 0.1 MM.	1	
3	90391500	O-RING D. 80.6X2.62 (3318)	2	
2	91847700	TAPER ROLLER BEARING 33207/Q	2	
1	70010022	CRANKCASE	1	

Illustration Male shaft (key) + flange A - GAS



* Lubrificare il sottotesta con grasso tipo:
Bisolfuro di molibdeno cod. 12.0015.00

Lubricate the underhead with grease type:
Molybdenum disulfide cod. 12.0015.00

** Lubrificare con grasso al silicone OCILIS 250
cod. 12.0016.00 solo sul diametro esterno

Lubricate with OCILIS 250 silicone grease
cod. 12.0016.00 only on the external diameter

Illustration Male shaft (key) + flange A - GAS

Pos.	Code	Description	Qty	Notes
KIT2158	34215801	KIT 2158*CONROD BUSHINGS +0,50	1	
KIT2157	34215701	KIT 2157*CONROD BUSHINGS +0,25	1	
KIT2156	34215601	KIT 2156*CONROD BUSHING	1	
KIT212	34021201		1	
KIT2041	34204101		1	
KIT2040	34204001		1	
71	99308400	SCREW M 8x30 UNI 5931	6	
70	10067320	FLANGE FOR HYDRAULIC MOTOR1 KE TYPE A		
65	99426600	VITE TE M12X25-UNI5739 ZINC. 1		
64	71223074	STAFFA DI SOLLEVAMENTO	1	
57	90352800	O-RING D. 29.00x1.50 NBR 70SH 3		
56	99192500	SCREW M06X35 5931 A2-70	6	
55	70050266	PISTON GUIDE ROD	3	
53	90910000	CONROD BUSHING (SMALL END) 3 S.70		
52	90922300	LOWER HALF CONROD BUSHING 3 (BIG END) S.70		
52	90922500	LOWER HALF CONROD BUSHING 1 +0.50 (BIG END) S.70		
52	90922400	LOWER HALF CONROD BUSHING 1 +0.25 (BIG END) S.70		
51	90922000	UPPER HALF CONROD BUSHING 3 (BIG END) S.70		
51	90922200	UPPER HALF CONROD BUSHING 1 +0.5 (BIG END) S.70		
51	90922100	UPPER HALF CONROD BUSHING 1 +0.25 (BIG END) S.70		
50	71225951	PLUG CAP	3	
49	70222551	CRANKCASE PLUG	6	
48	70030501	CONNECTING ROD COMPLETE	3	
47	36715401		6	
46	90517800		6	
44	36207066		6	
43	36201076	VALVE PLATE	6	
42	94745000	SPRING D. 16X27,5	6	
41	36204705	VALVE CAGE S.S. (70 SERIES)	6	
40	90386500	O-RING 29,82X2,62 (3118)	12	
39	90518000	ANTI-EXTR.RING D.32.4X36.5X1.5	6	

Illustration Male shaft (key) + flange A - GAS

Pos.	Code	Description	Qty	Notes
38	70221666		6	
37	70221536		2	
36	99367000		14	
35	99381800		8	
34	70123536		1	
33	90241000		3	
32	70221766		3	
31	90240000		3	
30	70081066		3	
29	90362600	O-RING D. 50,52X1,78 (2200)	3	
28	70221866		3	
27	90367100		3	
26	70040509	PISTON D.36X63	3	
25	96709900	WASHER D.10X45	3	
24	90167700	OIL SEAL D.36X47X7	3	
23	97742000	GUDGEON PIN D.18X36	3	
22	70050115	PISTON GUIDE T.N.	3	
21	70606801	PISTON GUIDE ASSY	3	
20	90166800	OIL SEAL D.35X52X7	1	
19	70150022	BEARING COVER (PTO SIDE)	1	
18	91490000	KEY 8h9X7X70 UNI 6604/A	1	
17	70020035		1	
16	99312300	CONN.ROD BOLT M8X1X42	6	
15	98200500	PLUG D. 15	1	
14	90394200	OR D.190.17X2.62 NBR 70SH	1	
13	70160022		1	
12	98211500	OIL DIPSTICK D.21,5X70	1	
11	98210066	PLUG G 3/8 X 13 STAINLESS	4	
10	90383300	O-RING 13,95X2,62 (3056)	4	
9	99185200		20	
8	70150122	BEARING COVER (OIL GLASS SIDE)	1	
7	90387700	O-RING 39,34X2,62 (3156)	1	
6	70211801	OIL SIGHT GLASS	1	
5	90075600	CIRCLIP D.45 (ZJ45)	1	
4	70220381	SHIM 0.25 MM.	1	
4	70220081	SHIM 0.1 MM.	1	
3	90391500	O-RING D. 80.6X2.62 (3318)	2	
2	91847700	TAPER ROLLER BEARING 33207/Q	2	

Illustration Male shaft (key) + flange A - GAS

Pos.	Code	Description	Qty	Notes
1	70010022	CRANKCASE	1	