



E3C2518



TECHNICAL INFORMATION

Flow (L/min)	18
Flow (US Gpm)	4,76
Rotation regime (rpm)	1750
Pressure (MPa)	25
Pressure (bar)	250
Pressure (psi)	3625
Power (hp)	11,7
Power (kW)	8,6
Overall dimensions L x l x h (mm)	265x223x140
Weight (kg)	9,5



Documents

Male shaft (key)

Pump head with VH integrated valve

Illustration Male shaft (key)

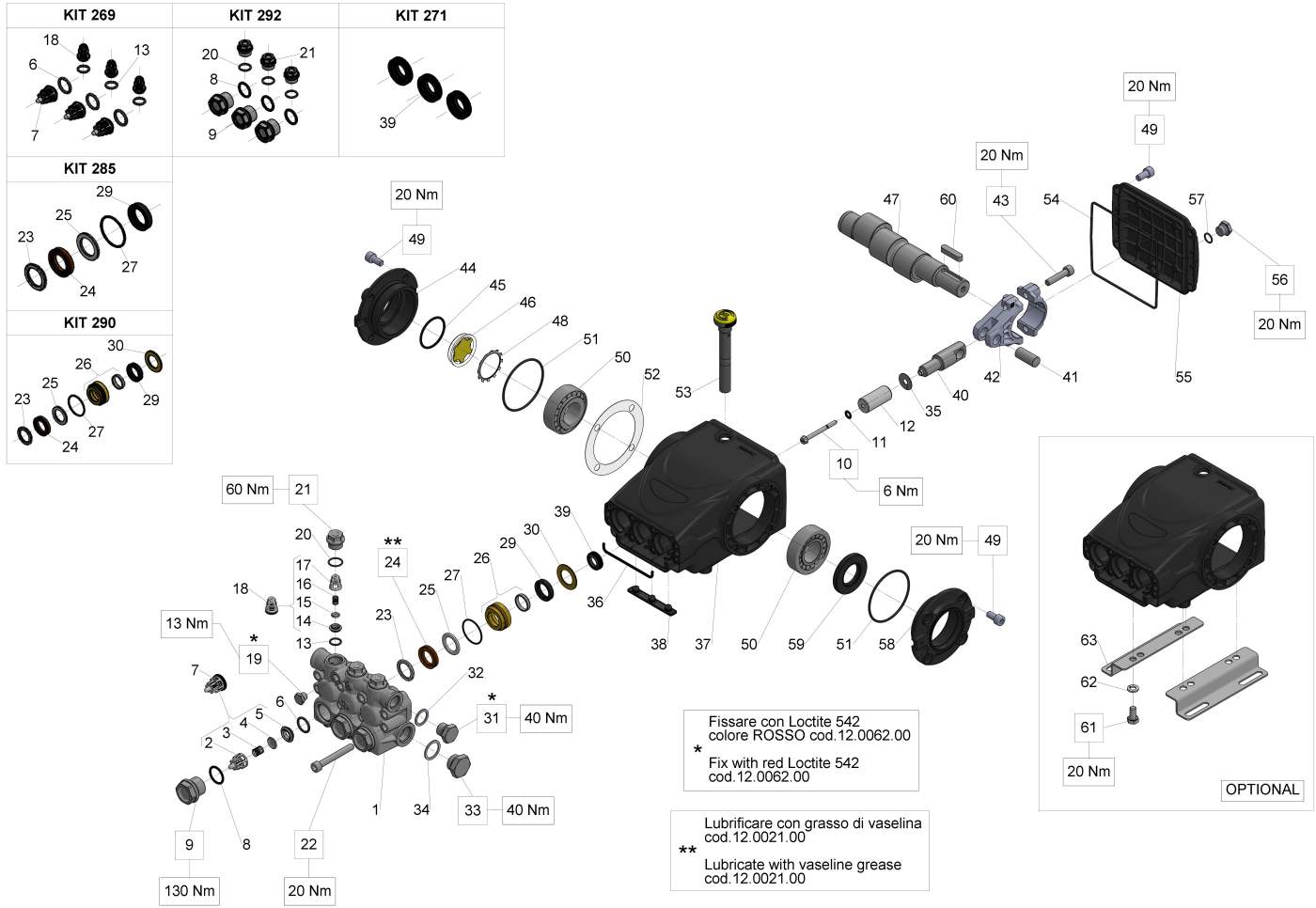


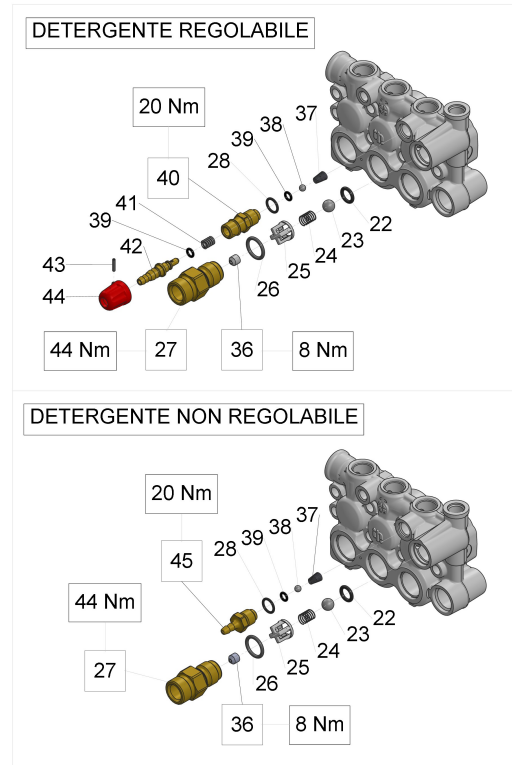
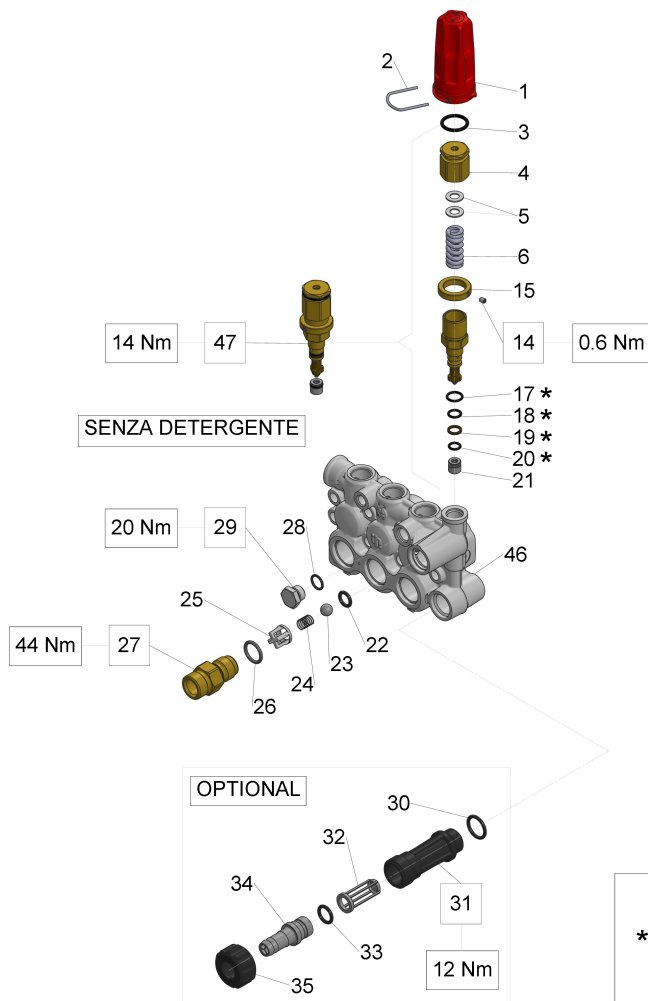
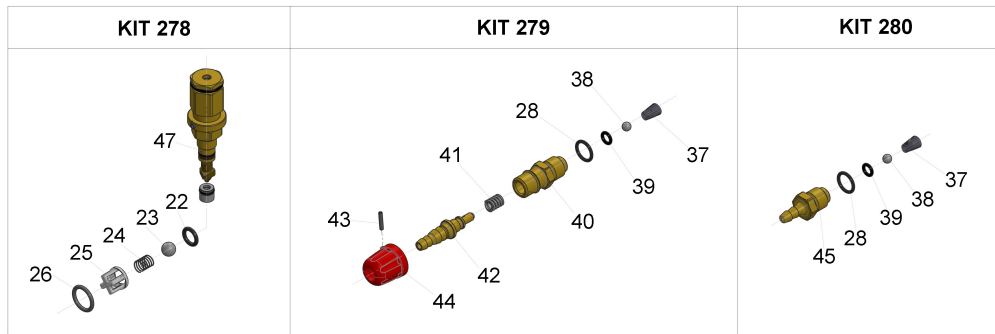
Illustration Male shaft (key)

Pos.	Code	Description	Qty	Notes
KIT292	34029201	KIT 292 VALVE PLUGS (NICK.)59 S.	1	
KIT290	34029001	KIT 290 CPL.SEAL D.20 59 SER.	1	
KIT285	34028501	KIT 285 PACKING D.20 59 SERIES	1	
KIT271	34027101	KIT 271 OIL SEAL D.15 58/59 SERIES	1	
KIT269	34026901	KIT 269 INTAKE/DELIVERY VALVES	1	
63	50200074	PUMP FOOT	2	
62	96701600	WASHER 8,4	4	
61	99303700	SCREW M 8x16-5739	4	
60	91489200	KEY 8(h9)X7X35 UNI 6604/A	1	
59	90164800	OIL SEAL 30x55x7	1	
58	47151022	OPEN SIDE COVER (47-66)	1	
57	90358500	O-RING 10,82X1,78 (2043)	1	
56	98204250	PLUG G1/4"x12	1	
55	59160022	REAR CRANKCASE COVER	1	
54	90392200	O-RING D.133.02X 2,62(3525)	1	
53	98211300	ASTA LIVELLO OLIO G3/8x54 D.41		
52	97567800	SHIM D.74,5X104X0,1	1	
52	97568000	SHIM D.74.5X104X0.3	1	
51	90391300	O-RING 67,95X2,62 (3268)	2	
50	91837500	TAPER BEARING	2	
49	99303900	SCREW M 8x16 UNI 5931	12	
48	90075600	CIRCLIP D.45 (ZJ45)	1	
47	59020235	CRANKSHAFT C.12	1	
46	70211801	OIL SIGHT GLASS	1	
45	90387700	O-RING 39,34X2,62 (3156)	1	
44	47151222	SIDE CRANKCASE COVER FOR OIL GAUGE	1	
43	99309900	SCREW M 8x35 UNI 5931	6	
42	59030001	CONNECTING ROD COMPLETE	3	
41	97739900	GUDGEON PIN D.14X34	3	
40	59050066	PISTON GUIDE	3	
39	90156550	OIL SEAL D.15X24X5/7	3	
38	58210451	PROTECTION	1	
37	59010022	PUMP CRANKCASE	1	
36	59211082	SPONGE GASKET D.3X103	1	
35	96699000	WASHER D.7.5X23X0.5	3	

Illustration Male shaft (key)

Pos.	Code	Description	Qty	Notes
34	96751400	WASHER 21,5X27X1,5	1	
33	98217900	PLUG G 1/2X10 NICKEL	1	
32	96738000	WASHER 17,5X23X1,5	1	
31	98209900	PLUG G. 3/8X13 NICKEL	1	
30	59210870	RING FOR SEAL D.20	3	
29	90269000	PACKING D.20X28X6.5 LP (66)	3	
27	90361200	O-RING 31,47X1,78 (2125)	3	
26	59606101	PACKING RETAINER+SLEEVE D.20	3	
25	90513400	ANTI-EXTRUSION RING D.20X30X2	3	
24	90269100	PACKING D.20X30X6/3.7 H.P. 66 SERIES	3	
23	66100751	HEAD RING D.20 H.P.	3	
22	99317700	VITE M08x60 5931 12.9 G321A+M	8	
21	98213750	PLUG M18X1,5X10 D.23 (NICK.)	3	
20	90359300	O-RING 15,60X1,78 (2062)	3	
19	98196700	PLUG G 1/8 X 8 NICKEL	1	
18	36719301	OUTLET VALVE	3	
17	36211151	VALVE CAGE	3	
16	94733300	SPRING D.6.2x10.5 S.S.	3	
15	36211276	SPHERICAL VALVE	3	
14	36211366	VALVE SEAT	3	
13	90367400	O-RING D. 12X2 (120-20)	3	
12	59040009	PISTON D. 20X42	3	
11	96690500	WASHER D.5X11.5x0.4 INOX+FKM58/59/63HT	3	
10	99169000	SCREW M05X55 SPEC. A2-70	3	
9	98222500	VALVE CAP M24X1,5X17 NICKEL	3	
8	90384700	O-RING 20,29X2,62(3081)	3	
7	36711501	INTAKE/DELIVERY VALVE	3	
6	90384100	O-RING 17,12X2,62 (3068)	3	
5	36200366	VALVE SEAT	3	
4	36200176	VALVE PLATE	3	
3	94737600	SPRING D. 9,4X14,8	3	
2	36202551	VALVE CAGE	3	
1	59121341	MANIFOLD D.22*NICKEL PL.	1	

Illustration Pump head with VH integrated valve



Se necessario, prima del montaggio lubrificare con grasso di vaselina cod.12.0021.00

* If necessary, lubricate with vaseline grease cod.12.0021.00 before assembly

Illustration Pump head with VH integrated valve

Pos.	Code	Description	Qty	Notes
KIT280	34028001	KIT 280 FIXED CHEM.INJECTOR 58-59	1	
KIT279	34027901	KIT 279 ADJUSTABLE CHEM. INJ. 58-59	1	
KIT278	34027801	KIT 278 BUILT-IN VALVE	58-59	1
47	36605401	H REG.VALVE ASSY.	1	
46	59121841	MANIFOLD D.20 W/VALVE*NICKEL P	1	
45	36349270	CHEM. HOSE BARB FITTING	1	
44	36348451	DETERGENT KNOB	1	
43	97661500	ELASTIC PIN D. 2X12	1	
42	36334270	SHUTTER WITH HOSE FITTING	1	
41	94733400	SPRING D.6.4X12.5	1	
40	36348270	CHEM. HOSE BARB FITTING	1	
39	90357300	O-RING D. 5,28X1,78 (2021)	2	
38	97478200	BALL 7/32(5,556) STAINLESS	1	
37	94821700	TAPER SPRING D.4,3X7,3X11	1	
36	10079866	INJECTOR NOZZLE D.2.20 ORANGE	1	
36	10079566	NOZZLE D. 2.00	1	
35	92982800	WING NUT G3/4	1	
34	36256951	INLET HOSE BARB FITTING (PL.)	1	
33	90382800	O-RING 12,37X2,62 (3050)	1	
32	92892500	FILTER D. 12X35	1	
31	36318251	INLET NIPPLE G 3/4	1	
30	90384100	O-RING 17,12X2,62 (3068)	1	
29	98204200	PLUG G1/4X9 NICKEL	1	
28	90358500	O-RING 10,82X1,78 (2043)	1	
27	36348870	NIPPLE D.3 M22X1.5 M	1	
27	36348970	NIPPLE D.3 G3/8F	1	
27	36347970	NIPPLE D.3 G3/8M	1	
27	36348770	NIPPLE D.3 3/8NPT M	1	
27	36349070	NIPPLE D.3 3/8NPT F	1	
26	90383900	O-RING 15,88X2,62 (121)	1	
25	36310451	VALVE GUIDE	1	
24	94735500	SPRING D. 8,5X12	1	
23	97483800	BALL 13/32 (10,319)	1	
22	90382300	O-RING 9,92X2,62 (112)	1	
21	36348366	REG. VALVE SEAT	1	

Illustration Pump head with VH integrated valve

Pos.	Code	Description	Qty	Notes
20	90357800	O-RING 7,66X1,78 (2031)	1	
19	90503800	ANTI-EXTR.RING D.9X12X1.5	1	
18	90358100	O-RING 8,73X1,78 - (108)	1	
17	90358700	O-RING D. 11,11X1,78 (114)	1	
15	36347770	MAX.PRESSURE NUT	1	
14	99126700	SCREW M4X5 UNI5929 S.S.	1	
6	94739500	SPRING D.11,3x34,5	1	
5	36348651	SLIDE WASHER	2	
4	36348170	PRESSURE ADJUST SCREW	1	
3	90384500	O-RING 18,72X2,6 (3075)	1	
2	10084666	REGULATION KNOB YOKE	1	
1	36350651	REGULATION KNOB - RED S. 53-58-59	1	