



E2E2813



TECHNICAL INFORMATION

Flow (L/min)	13
Flow (US Gpm)	3,43
Rotation regime (rpm)	3400
Pressure (MPa)	27,5
Pressure (bar)	275
Pressure (psi)	4000
Power (hp)	9,3
Power (kW)	6,84
Overall dimensions L x l x h (mm)	241,5x215x129,5
Weight (kg)	7



Documents

Male shaft (key)

Hollow shaft (key) Ø25,4 - vers. C1"

Pump head with VH integrated valve

Illustration Male shaft (key)

Pos.	Code	Description	Qty	Notes
KIT275	34027501	KIT 275 CPL.SEAL D.13 58 SERIE 1		
KIT272	34027201	KIT 272 PACKING D.13 58 SERIES	1	
KIT271	34027101	KIT 271 OIL SEAL D.15 58/59 SERIES	1	
KIT270	34027001	KIT 270 VALVE PLUGS 58 SERIES	1	
KIT269	34026901	KIT 269 INTAKE/DELIVERY VALVES	1	
61	58150122	COPERCHIO LATERALE	1	
60	90067100	CIRCLIP ZJ30	1	
59	90385900	O-RING 25,07X2,62 (3100)	1	
58	50200074	PUMP FOOT	2	
57	96701600	WASHER 8,4	4	
56	99303700	SCREW M 8x16-5739	4	
55	98196600	PLUG G1/8X8	1	
54	90358500	O-RING 10,82X1,78 (2043)	1	
53	98204250	PLUG G1/4"x12	1	
52	58160022	REAR CRANKCASE COVER	1	
51	90392550	O-RING D.113.97X2.62	1	
50	98210500	OIL DIPSTICK G3/8x51 D.7	1	
49	91489200	KEY 8(h9)X7X35 UNI 6604/A	1	
48	90164100	OIL SEAL D.25X62X10	1	
47	90389800	O-RING 56,82X2,62 (3225)	1	
46	91833100	BALL BEARING 6305 SKF	2	
45	63029135	CRANKSHAFT C.11	1	
44	53210851	OIL LEVEL GAUGE	1	
43	99183700	SCREW M 6x14 UNI 5931	8	
42	90063500	CIRCLIP D. 25 UNI 7435	1	
41	58030022	CONNECTING ROD	3	
40	97734000	CONNECTING-ROD PIN D.10X29,5	3	
39	58050066	PISTON GUIDE	3	
38	90156550	OIL SEAL D.15X24X5/7	3	
37	58210451	PROTECTION	1	
36	58010022	PUMP CRANKCASE	1	
35	58210582	SPONGE GASKET D.3X94	1	
34	96699000	WASHER D.7.5X23X0.5	3	
33	96751400	WASHER 21,5X27X1,5	1	
32	98217600	PLUG G1/2X10	1	
31	96738000	WASHER 17,5X23X1,5	1	

Illustration Male shaft (key)

Pos.	Code	Description	Qty	Notes
30	98210000	PLUG G3/8X13	1	
29	58210670	RING FOR SEAL D.13	3	
28	90260100	PACKING D.13X20X5 LP	3	
26	90360600	O-RING 26,70X1,78 (2106)	3	
25	58605601	PACKING RETAINER+SLEEVE D.13	3	
24	90507650	ANTI-EXTR.RING D.13X21X3	3	
23	90260200	PACKING D.13X21X4 H.P.	3	
22	44100251	HEAD RING D. 13	3	
21	99317500	SCREW M 8x60 UNI 5931	8	
20	98213700	VALVE CAP M18X1,5X10	3	
19	90359300	O-RING 15,60X1,78 (2062)	3	
18	36719301	OUTLET VALVE	3	
17	36211151	VALVE CAGE	3	
16	94733300	SPRING D.6.2x10.5 S.S.	3	
15	36211276	SPHERICAL VALVE	3	
14	36211366	VALVE SEAT	3	
13	90367400	O-RING D. 12X2 (120-20)	3	
12	58040009	PISTON D.13X42	3	
11	96690500	WASHER D.5X11.5x0.4 INOX+FKM58/59/63HT	3	
10	99169000	SCREW M05X55 SPEC. A2-70	3	
9	98222600	VALVE CAP M24X1,5X17	3	
8	90384700	O-RING 20,29X2,62(3081)	3	
7	36711501	INTAKE/DELIVERY VALVE	3	
6	90384100	O-RING 17,12X2,62 (3068)	3	
5	36200366	VALVE SEAT	3	
4	36200176	VALVE PLATE	3	
3	94737600	SPRING D. 9,4X14,8	3	
2	36202551	VALVE CAGE	3	
1	58120041	MANIFOLD FOR PISTON D.13	1	

Illustration Hollow shaft (key) Ø25,4 - vers. C1"

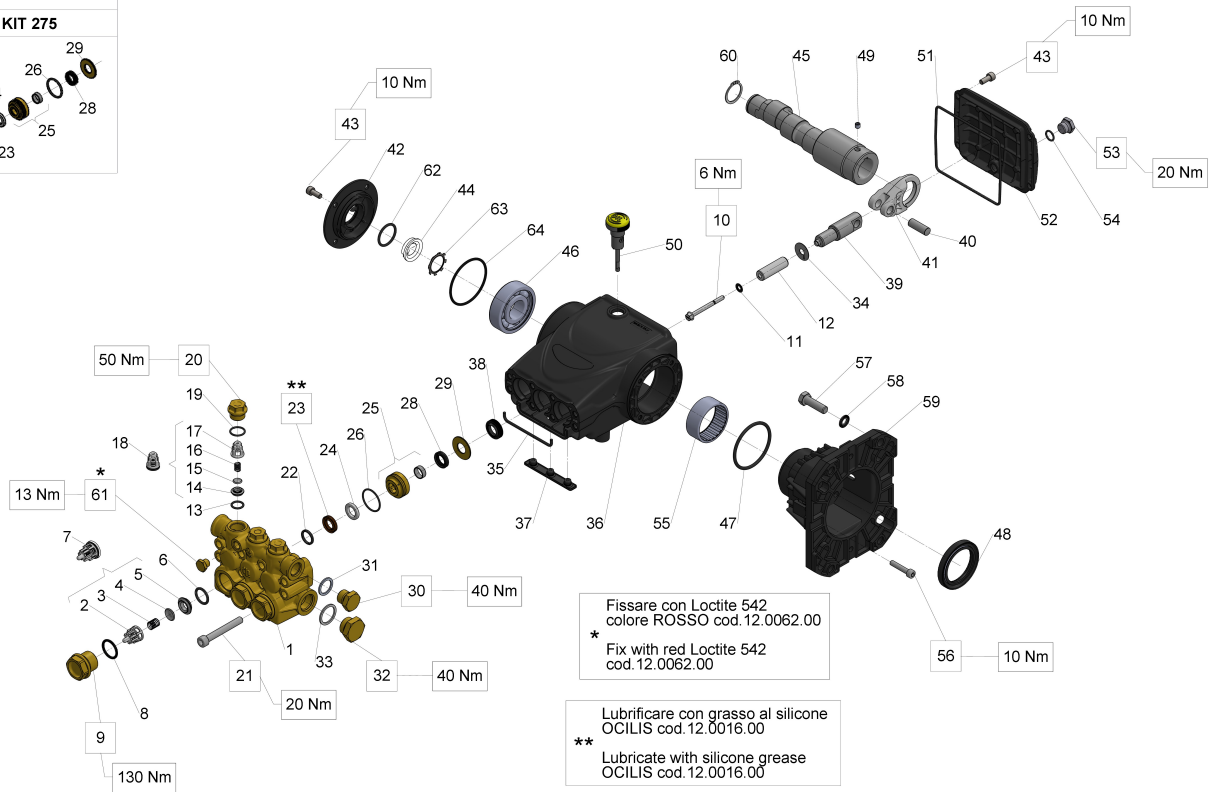
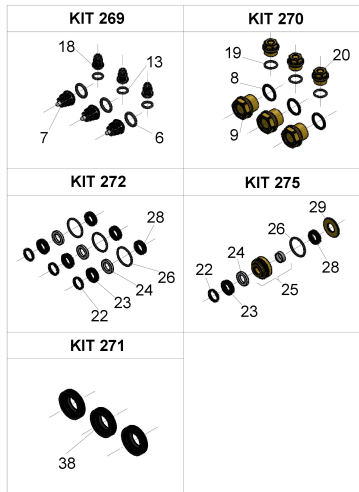


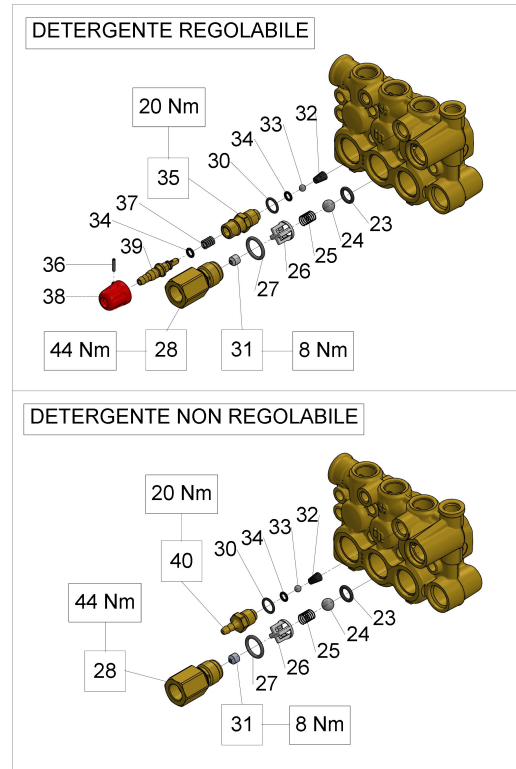
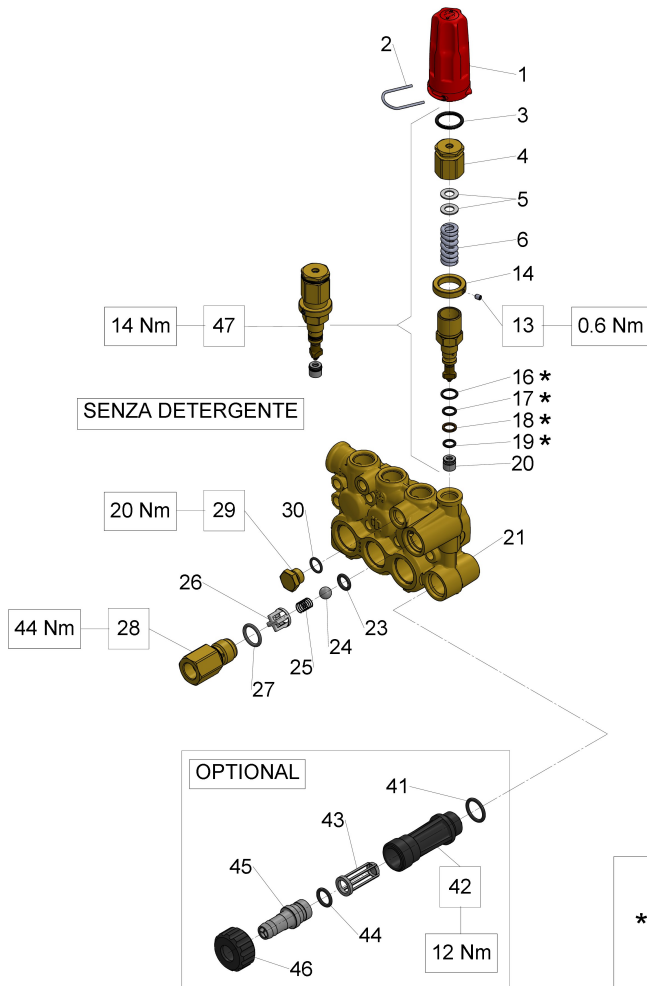
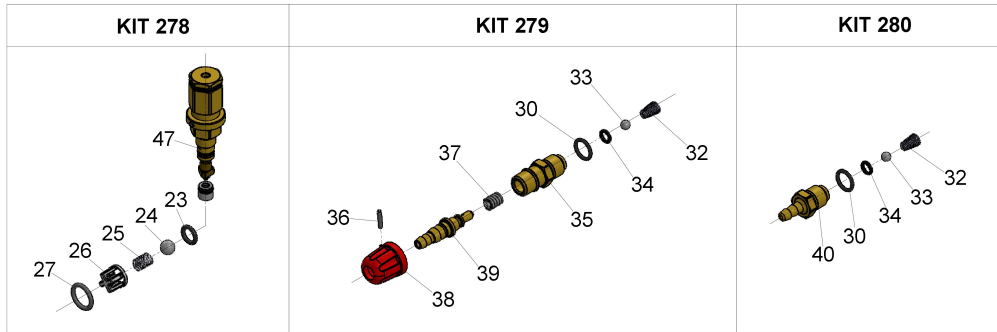
Illustration Hollow shaft (key) Ø25,4 - vers. C1"

Pos.	Code	Description	Qty	Notes
KIT275	34027501	KIT 275 CPL.SEAL D.13 58 SERIE 1		
KIT272	34027201	KIT 272 PACKING D.13 58 SERIES	1	
KIT271	34027101	KIT 271 OIL SEAL D.15 58/59 SERIES	1	
KIT270	34027001	KIT 270 VALVE PLUGS 58 SERIES	1	
KIT269	34026901	KIT 269 INTAKE/DELIVERY VALVES	1	
64	90389800	O-RING 56,82X2,62 (3225)	1	
63	90067100	CIRCLIP ZJ30	1	
62	90385900	O-RING 25,07X2,62 (3100)	1	
61	98196600	PLUG G1/8X8	1	
60	90063500	CIRCLIP D. 25 UNI 7435	1	
59	10051822	FLANGE FOR PETROL ENGINE	1	
58	96702000	WASHER 8,4X15X1,5	4	
58	96710400	WASHER 10,5X16X1	4	
57	99275500	SCREW 5/16"-24X1" ANSI B18.2.1	4	
57	99334600	SCREW 3/8"-16X1-1/4"B18.2.1 G5	4	
56	99191200	SCREW M 6x30 UNI 5931	4	
55	91856800	NEEDLE BEARING DHK 4520	1	
54	90358500	O-RING 10,82X1,78 (2043)	1	
53	98204250	PLUG G1/4"x12	1	
52	58160022	REAR CRANKCASE COVER	1	
51	90392550	O-RING D.113.97X2.62	1	
50	98210500	OIL DIPSTICK G3/8x51 D.7	1	
49	99179000	SCREW M6X6 UNI 5929 12.9	1	
48	90169000	OIL SEAL D. 45X62X8	1	
47	90409700	O-RING 55,56X3,53 (159)	1	
46	91833100	BALL BEARING 6305 SKF	1	
45	63029265	CRANKSHAFT C.11 HOLLOW D.1" 1		
44	53210851	OIL LEVEL GAUGE	1	
43	99183700	SCREW M 6x14 UNI 5931	8	
42	58150122	COPERCHIO LATERALE	1	
41	58030022	CONNECTING ROD	3	
40	97734000	CONNECTING-ROD PIN D.10X29,5	3	
39	58050066	PISTON GUIDE	3	
38	90156550	OIL SEAL D.15X24X5/7	3	
37	58210451	PROTECTION	1	

Illustration Hollow shaft (key) Ø25,4 - vers. C1"

Pos.	Code	Description	Qty	Notes
36	58010022	PUMP CRANKCASE	1	
35	58210582	SPONGE GASKET D.3X94	1	
34	96699000	WASHER D.7.5X23X0.5	3	
33	96751400	WASHER 21,5X27X1,5	1	
32	98217600	PLUG G1/2X10	1	
31	96738000	WASHER 17,5X23X1,5	1	
30	98210000	PLUG G3/8X13	1	
29	58210670	RING FOR SEAL D.13	3	
28	90260100	PACKING D.13X20X5 LP	3	
26	90360600	O-RING 26,70X1,78 (2106)	3	
25	58605601	PACKING RETAINER+SLEEVE D.13	3	
24	90507650	ANTI-EXTR.RING D.13X21X3	3	
23	90260200	PACKING D.13X21X4 H.P.	3	
22	44100251	HEAD RING D. 13	3	
21	99317500	SCREW M 8x60 UNI 5931	8	
20	98213700	VALVE CAP M18X1,5X10	3	
19	90359300	O-RING 15,60X1,78 (2062)	3	
18	36719301	OUTLET VALVE	3	
17	36211151	VALVE CAGE	3	
16	94733300	SPRING D.6.2x10.5 S.S.	3	
15	36211276	SPHERICAL VALVE	3	
14	36211366	VALVE SEAT	3	
13	90367400	O-RING D. 12X2 (120-20)	3	
12	58040009	PISTON D.13X42	3	
11	96690500	WASHER D.5X11.5x0.4 INOX+FKM58/59/63HT	3	
10	99169000	SCREW M05X55 SPEC. A2-70	3	
9	98222600	VALVE CAP M24X1,5X17	3	
8	90384700	O-RING 20,29X2,62(3081)	3	
7	36711501	INTAKE/DELIVERY VALVE	3	
6	90384100	O-RING 17,12X2,62 (3068)	3	
5	36200366	VALVE SEAT	3	
4	36200176	VALVE PLATE	3	
3	94737600	SPRING D. 9,4X14,8	3	
2	36202551	VALVE CAGE	3	
1	58120041	MANIFOLD FOR PISTON D.13	1	

Illustration Pump head with VH integrated valve



Se necessario, prima del montaggio lubrificare con grasso di vaselina cod.12.0021.00

* If necessary, lubricate with vaseline grease cod.12.0021.00 before assembly

Illustration Pump head with VH integrated valve

Pos.	Code	Description	Qty	Notes
KIT280	34028001	KIT 280 FIXED CHEM.INJECTOR 58-59	1	
KIT279	34027901	KIT 279 ADJUSTABLE CHEM. INJ. 58-59	1	
KIT278	34027801	KIT 278 BUILT-IN VALVE 58-59	1	
47	36605401	H REG.VALVE ASSY.	1	
46	92982800	WING NUT G3/4	1	
45	36256951	INLET HOSE BARB FITTING (PL.)	1	
44	90382800	O-RING 12,37X2,62 (3050)	1	
43	92892500	FILTER D. 12X35	1	
42	36318251	INLET NIPPLE G 3/4	1	
41	90384100	O-RING 17,12X2,62 (3068)	1	
40	36349270	CHEM. HOSE BARB FITTING	1	
39	36334270	SHUTTER WITH HOSE FITTING	1	
38	36348451	DETERGENT KNOB	1	
37	94733400	SPRING D.6.4X12.5	1	
36	97661500	ELASTIC PIN D. 2X12	1	
35	36348270	CHEM. HOSE BARB FITTING	1	
34	90357300	O-RING D. 5,28X1,78 (2021)	2	
33	97478200	BALL 7/32(5,556) STAINLESS	1	
32	94821700	TAPER SPRING D.4,3X7,3X11	1	
31	10079866	INJECTOR NOZZLE D.2.20 ORANGE	1	
31	10079566	NOZZLE D. 2.00	1	
30	90358500	O-RING 10,82X1,78 (2043)	1	
29	98204100	PLUG G1/4X9	1	
28	36348870	NIPPLE D.3 M22X1.5 M	1	
28	36348970	NIPPLE D.3 G3/8F	1	
28	36347970	NIPPLE D.3 G3/8M	1	
28	36348770	NIPPLE D.3 3/8NPT M	1	
28	36349070	NIPPLE D.3 3/8NPT F	1	
27	90383900	O-RING 15,88X2,62 (121)	1	
26	36310451	VALVE GUIDE	1	
25	94735500	SPRING D. 8,5X12	1	
24	97483800	BALL 13/32 (10,319)	1	
23	90382300	O-RING 9,92X2,62 (112)	1	
21	58120341	MANIFOLD D.13 W/VALVE	1	
21	58120941	MANIFOLD D.13*VALVE L	1	
20	36348366	REG. VALVE SEAT	1	

Illustration Pump head with VH integrated valve

Pos.	Code	Description	Qty	Notes
19	90357800	O-RING 7,66X1,78 (2031)	1	
18	90503800	ANTI-EXTR.RING D.9X12X1.5	1	
17	90358100	O-RING 8,73X1,78 - (108)	1	
16	90358700	O-RING D. 11,11X1,78 (114)	1	
14	36347770	MAX.PRESSURE NUT	1	
13	99126700	SCREW M4X5 UNI5929 S.S.	1	
6	94739500	SPRING D.11,3x34,5	1	
5	36348651	SLIDE WASHER	2	
4	36348170	PRESSURE ADJUST SCREW	1	
3	90384500	O-RING 18,72X2,6 (3075)	1	
2	10084666	REGULATION KNOB YOKE	1	
1	36350651	REGULATION KNOB - RED S. 53-58-59	1	