



E2E2108



TECHNICAL INFORMATION

Flow (L/min)	8
Flow (US Gpm)	2,11
Rotation regime (rpm)	3400
Pressure (MPa)	21
Pressure (bar)	210
Pressure (psi)	3045
Power (hp)	4,4
Power (kW)	3,24
Overall dimensions L x l x h (mm)	241,5x215x129,5
Weight (kg)	7



Documents

Male shaft (key)

Hollow shaft (key) Ø19 - vers. C3/4"

Hollow shaft (key) Ø25,4 - vers. C1"

Pump head with VH integrated valve

Illustration Male shaft (key)

KIT 269	KIT 270
KIT 276	KIT 273
KIT 271	

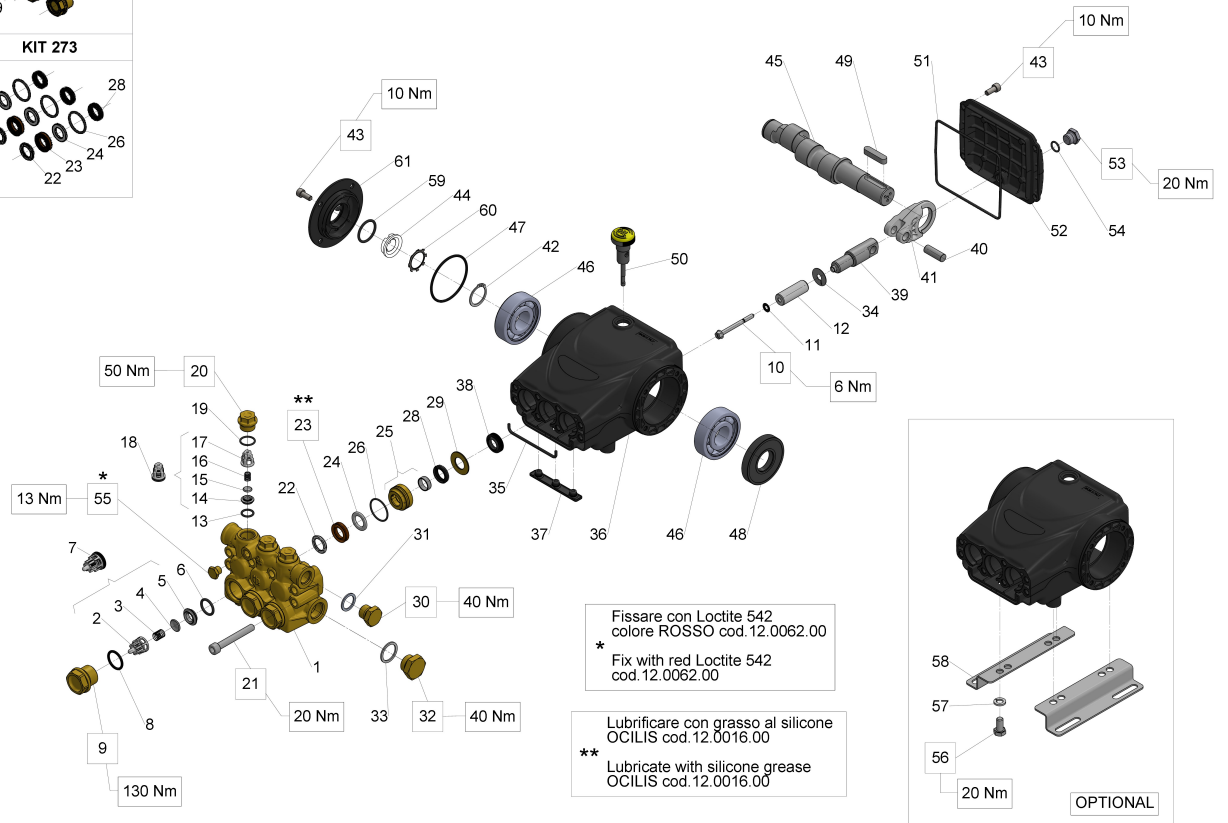


Illustration Male shaft (key)

Pos.	Code	Description	Qty	Notes
KIT276	34027601	KIT 276 CPL.SEAL D.15 58 SERIE 1		
KIT273	34027301	KIT 273 PACKING D.15 58 SERIES	1	
KIT271	34027101	KIT 271 OIL SEAL D.15 58/59 SERIES	1	
KIT270	34027001	KIT 270 VALVE PLUGS 58 SERIES	1	
KIT269	34026901	KIT 269 INTAKE/DELIVERY VALVES	1	
61	58150122	COPERCHIO LATERALE	1	
60	90067100	CIRCLIP ZJ30	1	
59	90385900	O-RING 25,07X2,62 (3100)	1	
58	50200074	PUMP FOOT	2	
57	96701600	WASHER 8,4	4	
56	99303700	SCREW M 8x16-5739	4	
55	98196600	PLUG G1/8X8	1	
54	90358500	O-RING 10,82X1,78 (2043)	1	
53	98204250	PLUG G1/4"x12	1	
52	58160022	REAR CRANKCASE COVER	1	
51	90392550	O-RING D.113.97X2.62	1	
50	98210500	OIL DIPSTICK G3/8x51 D.7	1	
49	91489200	KEY 8(h9)X7X35 UNI 6604/A	1	
48	90164100	OIL SEAL D.25X62X10	1	
47	90389800	O-RING 56,82X2,62 (3225)	1	
46	91833100	BALL BEARING 6305 SKF	2	
45	63020265	CRANKSHAFT C.5 (D.24)	1	
44	53210851	OIL LEVEL GAUGE	1	
43	99183700	SCREW M 6x14 UNI 5931	8	
42	90063500	CIRCLIP D. 25 UNI 7435	1	
41	58030022	CONNECTING ROD	3	
40	97734000	CONNECTING-ROD PIN D.10X29,5	3	
39	58050066	PISTON GUIDE	3	
38	90156550	OIL SEAL D.15X24X5/7	3	
37	58210451	PROTECTION	1	
36	58010022	PUMP CRANKCASE	1	
35	58210582	SPONGE GASKET D.3X94	1	
34	96699000	WASHER D.7.5X23X0.5	3	
33	96751400	WASHER 21,5X27X1,5	1	
32	98217600	PLUG G1/2X10	1	
31	96738000	WASHER 17,5X23X1,5	1	

Illustration Male shaft (key)

Pos.	Code	Description	Qty	Notes
30	98210000	PLUG G3/8X13	1	
29	58210770	RING FOR SEAL D.15	3	
28	90260800	PACKING D. 15X22X5 LP 63	3	
26	90360600	O-RING 26,70X1,78 (2106)	3	
25	58605701	PACKING RETAINER+SLEEVE D.15	3	
24	90508990	ANTI-EXTR. RING D.15X24X2	3	
23	90261100	PACKING D.15X24X5/2.7 HP	3	
22	63101051	HEAD RING D.15 HP	3	
21	99317500	SCREW M 8x60 UNI 5931	8	
20	98213700	VALVE CAP M18X1,5X10	3	
19	90359300	O-RING 15,60X1,78 (2062)	3	
18	36719301	OUTLET VALVE	3	
17	36211151	VALVE CAGE	3	
16	94733300	SPRING D.6.2x10.5 S.S.	3	
15	36211276	SPHERICAL VALVE	3	
14	36211366	VALVE SEAT	3	
13	90367400	O-RING D. 12X2 (120-20)	3	
12	58040109	PISTON D.15X42	3	
11	96690500	WASHER D.5X11.5x0.4 INOX+FKM58/59/63HT	3	
10	99169000	SCREW M05X55 SPEC. A2-70	3	
9	98222600	VALVE CAP M24X1,5X17	3	
8	90384700	O-RING 20,29X2,62(3081)	3	
7	36711501	INTAKE/DELIVERY VALVE	3	
6	90384100	O-RING 17,12X2,62 (3068)	3	
5	36200366	VALVE SEAT	3	
4	36200176	VALVE PLATE	3	
3	94737600	SPRING D. 9,4X14,8	3	
2	36202551	VALVE CAGE	3	
1	58120141	MANIFOLD FOR PISTON D.15	1	

Illustration Hollow shaft (key) Ø19 - vers. C3/4"

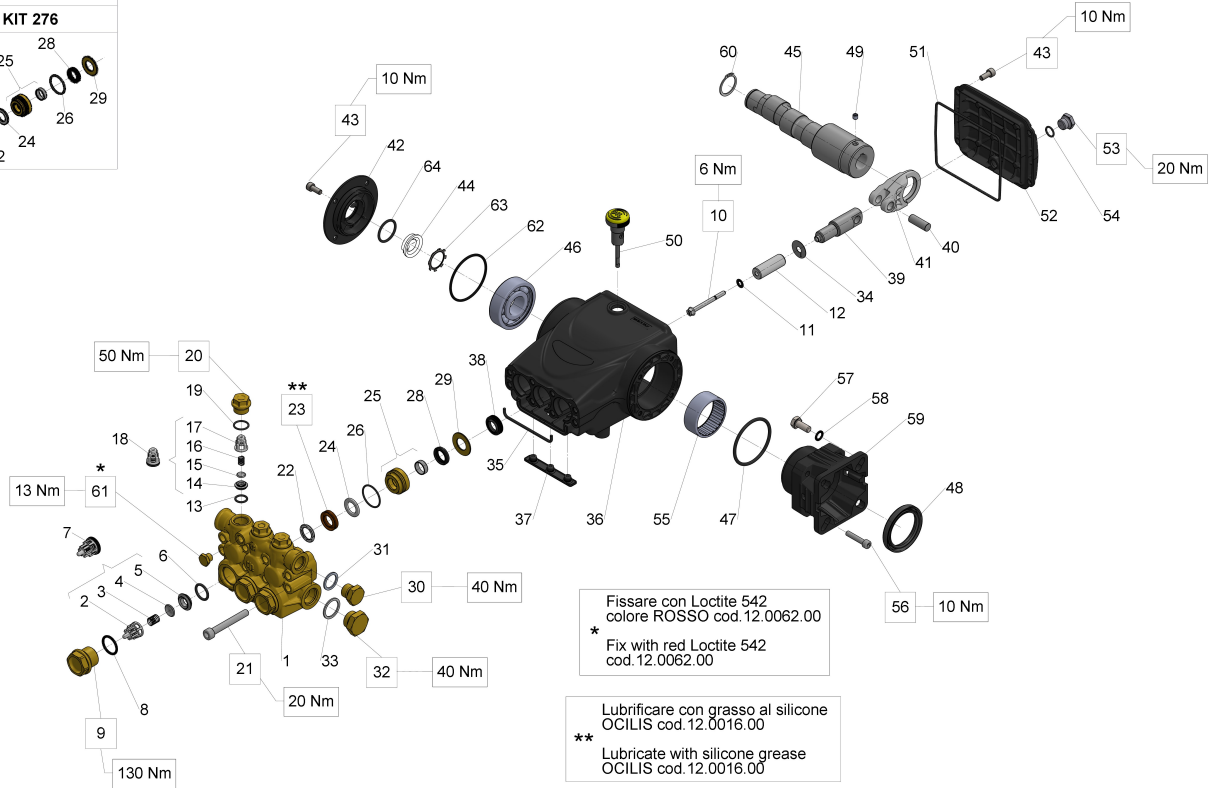
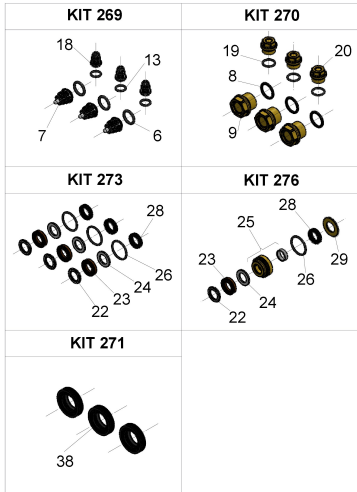


Illustration Hollow shaft (key) Ø19 - vers. C3/4"

Pos.	Code	Description	Qty	Notes
KIT276	34027601	KIT 276 CPL.SEAL D.15 58 SERIE 1		
KIT273	34027301	KIT 273 PACKING D.15 58 SERIES	1	
KIT271	34027101	KIT 271 OIL SEAL D.15 58/59 SERIES	1	
KIT270	34027001	KIT 270 VALVE PLUGS 58 SERIES	1	
KIT269	34026901	KIT 269 INTAKE/DELIVERY VALVES	1	
64	90385900	O-RING 25,07X2,62 (3100)	1	
63	90067100	CIRCLIP ZJ30	1	
62	90389800	O-RING 56,82X2,62 (3225)	1	
61	98196600	PLUG G1/8X8	1	
60	90063500	CIRCLIP D. 25 UNI 7435	1	
59	10061722	FLANGE FOR PETROL ENGINE (63)	1	
58	96701400	WASHER 8,4X13X0,8	4	
57	99273000	SCREW 5/16"X3/4"X24 UNF	4	
56	99191200	SCREW M 6x30 UNI 5931	4	
55	91856800	NEEDLE BEARING DHK 4520	1	
54	90358500	O-RING 10,82X1,78 (2043)	1	
53	98204250	PLUG G1/4"x12	1	
52	58160022	REAR CRANKCASE COVER	1	
51	90392550	O-RING D.113.97X2.62	1	
50	98210500	OIL DIPSTICK G3/8x51 D.7	1	
49	99179000	SCREW M6X6 UNI 5929 12.9	1	
48	90168700	OIL SEAL D.45X60X8 63 SERIES	1	
47	90409700	O-RING 55,56X3,53 (159)	1	
46	91833100	BALL BEARING 6305 SKF	1	
45	63026265	CRANKSHAFT C5 D.3/4" HOLLOW1		
44	53210851	OIL LEVEL GAUGE	1	
43	99183700	SCREW M 6x14 UNI 5931	8	
42	58150122	COPERCHIO LATERALE	1	
41	58030022	CONNECTING ROD	3	
40	97734000	CONNECTING-ROD PIN D.10X29,5	3	
39	58050066	PISTON GUIDE	3	
38	90156550	OIL SEAL D.15X24X5/7	3	
37	58210451	PROTECTION	1	
36	58010022	PUMP CRANKCASE	1	
35	58210582	SPONGE GASKET D.3X94	1	

Illustration Hollow shaft (key) Ø19 - vers. C3/4"

Pos.	Code	Description	Qty	Notes
34	96699000	WASHER D.7.5X23X0.5	3	
33	96751400	WASHER 21,5X27X1,5	1	
32	98217600	PLUG G1/2X10	1	
31	96738000	WASHER 17,5X23X1,5	1	
30	98210000	PLUG G3/8X13	1	
29	58210770	RING FOR SEAL D.15	3	
28	90260800	PACKING D. 15X22X5 LP 63	3	
26	90360600	O-RING 26,70X1,78 (2106)	3	
25	58605701	PACKING RETAINER+SLEEVE D.15	3	
24	90508990	ANTI-EXTR. RING D.15X24X2	3	
23	90261100	PACKING D.15X24X5/2.7 HP	3	
22	63101051	HEAD RING D.15 HP	3	
21	99317500	SCREW M 8x60 UNI 5931	8	
20	98213700	VALVE CAP M18X1,5X10	3	
19	90359300	O-RING 15,60X1,78 (2062)	3	
18	36719301	OUTLET VALVE	3	
17	36211151	VALVE CAGE	3	
16	94733300	SPRING D.6.2x10.5 S.S.	3	
15	36211276	SPHERICAL VALVE	3	
14	36211366	VALVE SEAT	3	
13	90367400	O-RING D. 12X2 (120-20)	3	
12	58040109	PISTON D.15X42	3	
11	96690500	WASHER D.5X11.5x0.4 INOX+FKM58/59/63HT	3	
10	99169000	SCREW M05X55 SPEC. A2-70	3	
9	98222600	VALVE CAP M24X1,5X17	3	
8	90384700	O-RING 20,29X2,62(3081)	3	
7	36711501	INTAKE/DELIVERY VALVE	3	
6	90384100	O-RING 17,12X2,62 (3068)	3	
5	36200366	VALVE SEAT	3	
4	36200176	VALVE PLATE	3	
3	94737600	SPRING D. 9,4X14,8	3	
2	36202551	VALVE CAGE	3	
1	58120141	MANIFOLD FOR PISTON D.15	1	

Illustration Hollow shaft (key) Ø25,4 - vers. C1"

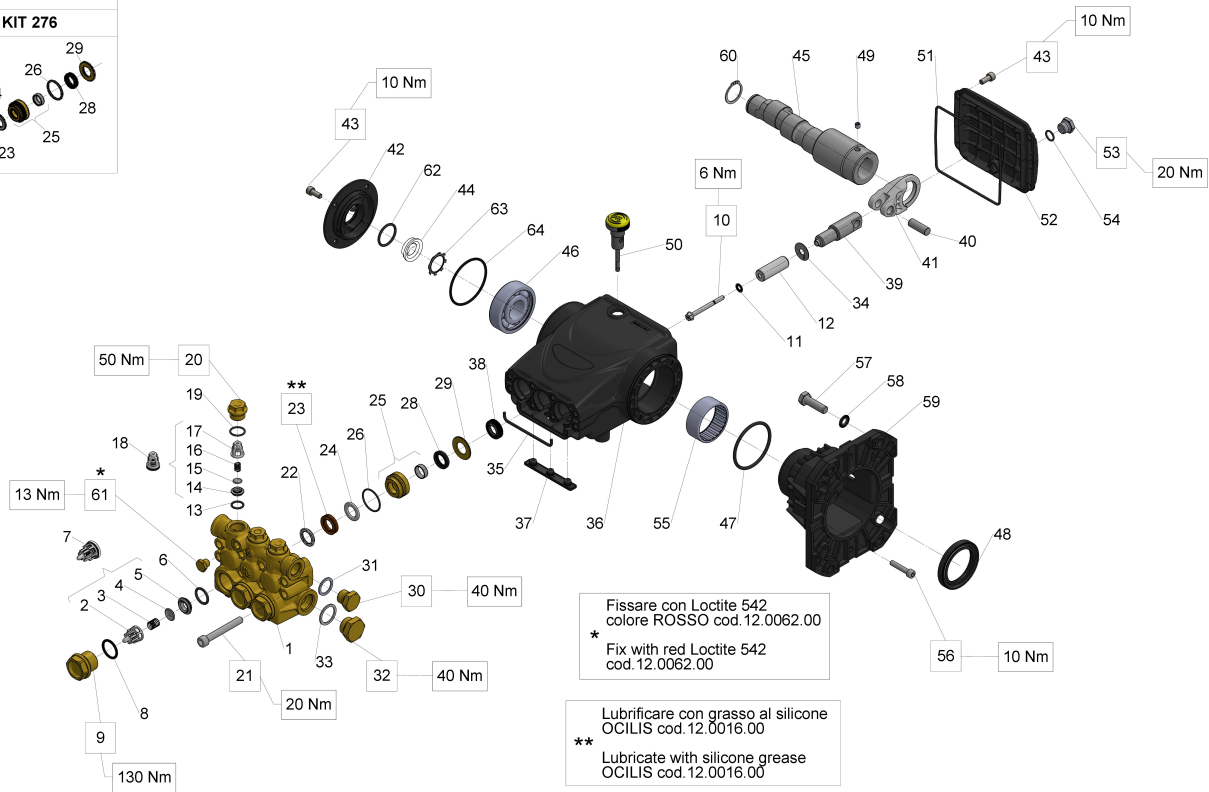
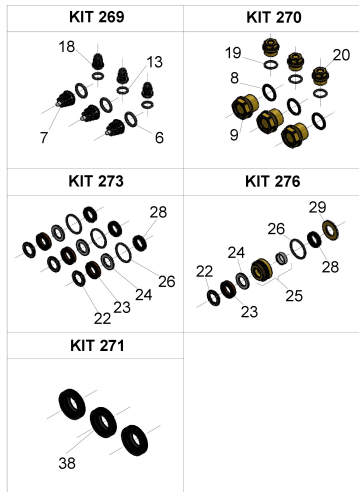


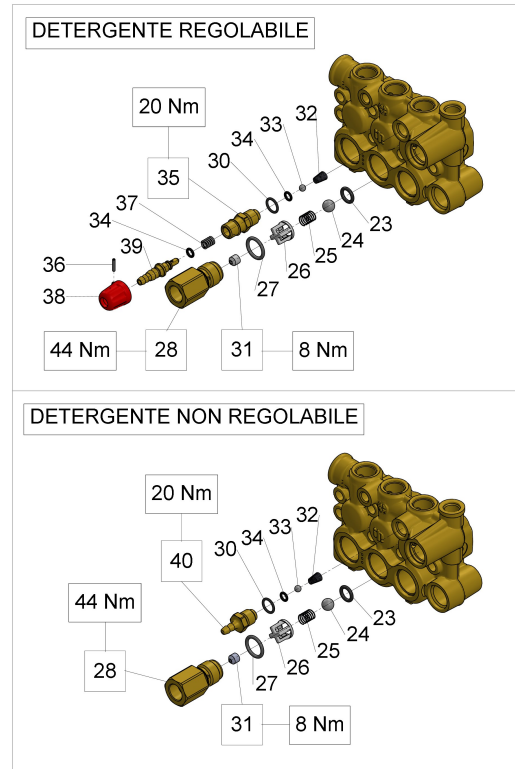
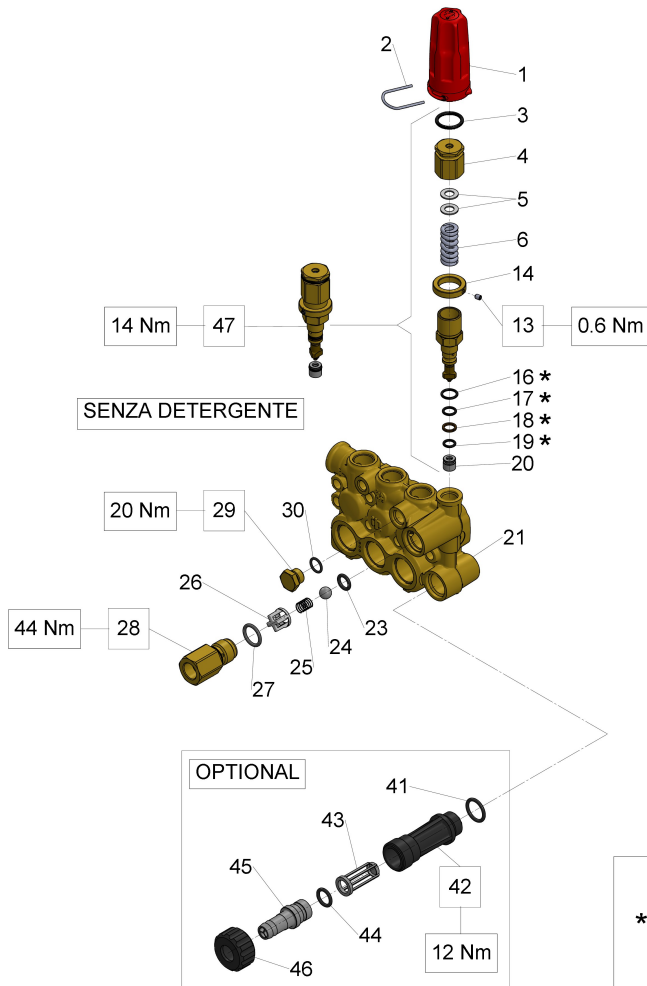
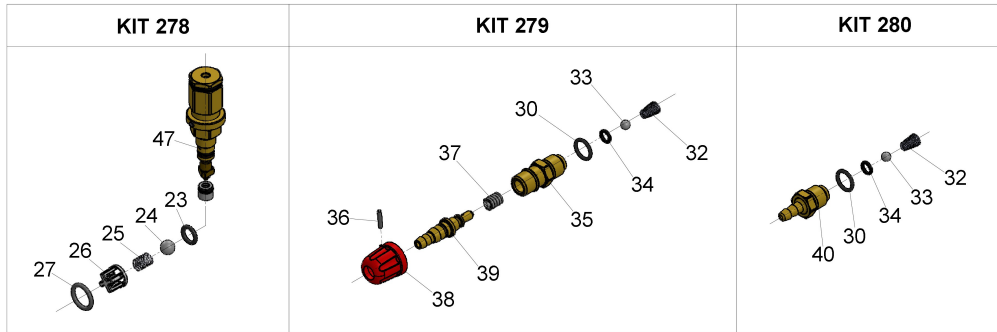
Illustration Hollow shaft (key) Ø25,4 - vers. C1"

Pos.	Code	Description	Qty	Notes
KIT276	34027601	KIT 276 CPL.SEAL D.15 58 SERIE 1		
KIT273	34027301	KIT 273 PACKING D.15 58 SERIES	1	
KIT271	34027101	KIT 271 OIL SEAL D.15 58/59 SERIES	1	
KIT270	34027001	KIT 270 VALVE PLUGS 58 SERIES	1	
KIT269	34026901	KIT 269 INTAKE/DELIVERY VALVES	1	
64	90389800	O-RING 56,82X2,62 (3225)	1	
63	90067100	CIRCLIP ZJ30	1	
62	90385900	O-RING 25,07X2,62 (3100)	1	
61	98196600	PLUG G1/8X8	1	
60	90063500	CIRCLIP D. 25 UNI 7435	1	
59	10051822	FLANGE FOR PETROL ENGINE	1	
58	96702000	WASHER 8,4X15X1,5	4	
58	96710400	WASHER 10,5X16X1	4	
57	99275500	SCREW 5/16"-24X1" ANSI B18.2.1	4	
57	99334600	SCREW 3/8"-16X1-1/4"B18.2.1 G5	4	
56	99191200	SCREW M 6x30 UNI 5931	4	
55	91856800	NEEDLE BEARING DHK 4520	1	
54	90358500	O-RING 10,82X1,78 (2043)	1	
53	98204250	PLUG G1/4"x12	1	
52	58160022	REAR CRANKCASE COVER	1	
51	90392550	O-RING D.113.97X2.62	1	
50	98210500	OIL DIPSTICK G3/8x51 D.7	1	
49	99179000	SCREW M6X6 UNI 5929 12.9	1	
48	90169000	OIL SEAL D. 45X62X8	1	
47	90409700	O-RING 55,56X3,53 (159)	1	
46	91833100	BALL BEARING 6305 SKF	1	
45	63027465	CRANKSHAFT C.5 D.1" HOLLOW	1	
44	53210851	OIL LEVEL GAUGE	1	
43	99183700	SCREW M 6x14 UNI 5931	8	
42	58150122	COPERCHIO LATERALE	1	
41	58030022	CONNECTING ROD	3	
40	97734000	CONNECTING-ROD PIN D.10X29,5	3	
39	58050066	PISTON GUIDE	3	
38	90156550	OIL SEAL D.15X24X5/7	3	
37	58210451	PROTECTION	1	

Illustration Hollow shaft (key) Ø25,4 - vers. C1"

Pos.	Code	Description	Qty	Notes
36	58010022	PUMP CRANKCASE	1	
35	58210582	SPONGE GASKET D.3X94	1	
34	96699000	WASHER D.7.5X23X0.5	3	
33	96751400	WASHER 21,5X27X1,5	1	
32	98217600	PLUG G1/2X10	1	
31	96738000	WASHER 17,5X23X1,5	1	
30	98210000	PLUG G3/8X13	1	
29	58210770	RING FOR SEAL D.15	3	
28	90260800	PACKING D. 15X22X5 LP 63	3	
26	90360600	O-RING 26,70X1,78 (2106)	3	
25	58605701	PACKING RETAINER+SLEEVE D.15	3	
24	90508990	ANTI-EXTR. RING D.15X24X2	3	
23	90261100	PACKING D.15X24X5/2.7 HP	3	
22	63101051	HEAD RING D.15 HP	3	
21	99317500	SCREW M 8x60 UNI 5931	8	
20	98213700	VALVE CAP M18X1,5X10	3	
19	90359300	O-RING 15,60X1,78 (2062)	3	
18	36719301	OUTLET VALVE	3	
17	36211151	VALVE CAGE	3	
16	94733300	SPRING D.6.2x10.5 S.S.	3	
15	36211276	SPHERICAL VALVE	3	
14	36211366	VALVE SEAT	3	
13	90367400	O-RING D. 12X2 (120-20)	3	
12	58040109	PISTON D.15X42	3	
11	96690500	WASHER D.5X11.5x0.4 INOX+FKM58/59/63HT	3	
10	99169000	SCREW M05X55 SPEC. A2-70	3	
9	98222600	VALVE CAP M24X1,5X17	3	
8	90384700	O-RING 20,29X2,62(3081)	3	
7	36711501	INTAKE/DELIVERY VALVE	3	
6	90384100	O-RING 17,12X2,62 (3068)	3	
5	36200366	VALVE SEAT	3	
4	36200176	VALVE PLATE	3	
3	94737600	SPRING D. 9,4X14,8	3	
2	36202551	VALVE CAGE	3	
1	58120141	MANIFOLD FOR PISTON D.15	1	

Illustration Pump head with VH integrated valve



Se necessario, prima del montaggio lubrificare con grasso di vaselina cod.12.0021.00

* If necessary, lubricate with vaseline grease cod.12.0021.00 before assembly

Illustration Pump head with VH integrated valve

Pos.	Code	Description	Qty	Notes
KIT280	34028001	KIT 280 FIXED CHEM.INJECTOR 58-59	1	
KIT279	34027901	KIT 279 ADJUSTABLE CHEM. INJ. 58-59	1	
KIT278	34027801	KIT 278 BUILT-IN VALVE 58-59	1	
47	36605401	H REG.VALVE ASSY.	1	
46	92982800	WING NUT G3/4	1	
45	36256951	INLET HOSE BARB FITTING (PL.)	1	
44	90382800	O-RING 12,37X2,62 (3050)	1	
43	92892500	FILTER D. 12X35	1	
42	36318251	INLET NIPPLE G 3/4	1	
41	90384100	O-RING 17,12X2,62 (3068)	1	
40	36349270	CHEM. HOSE BARB FITTING	1	
39	36334270	SHUTTER WITH HOSE FITTING	1	
38	36348451	DETERGENT KNOB	1	
37	94733400	SPRING D.6.4X12.5	1	
36	97661500	ELASTIC PIN D. 2X12	1	
35	36348270	CHEM. HOSE BARB FITTING	1	
34	90357300	O-RING D. 5,28X1,78 (2021)	2	
33	97478200	BALL 7/32(5,556) STAINLESS	1	
32	94821700	TAPER SPRING D.4,3X7,3X11	1	
31	10079866	INJECTOR NOZZLE D.2.20 ORANGE	1	
31	10079566	NOZZLE D. 2.00	1	
30	90358500	O-RING 10,82X1,78 (2043)	1	
29	98204100	PLUG G1/4X9	1	
28	36348870	NIPPLE D.3 M22X1.5 M	1	
28	36348970	NIPPLE D.3 G3/8F	1	
28	36347970	NIPPLE D.3 G3/8M	1	
28	36348770	NIPPLE D.3 3/8NPT M	1	
28	36349070	NIPPLE D.3 3/8NPT F	1	
27	90383900	O-RING 15,88X2,62 (121)	1	
26	36310451	VALVE GUIDE	1	
25	94735500	SPRING D. 8,5X12	1	
24	97483800	BALL 13/32 (10,319)	1	
23	90382300	O-RING 9,92X2,62 (112)	1	
21	58120441	MANIFOLD D.15 W/VALVE	1	
21	58121041	MANIFOLD D.15*VALVE L	1	
20	36348366	REG. VALVE SEAT	1	

Illustration Pump head with VH integrated valve

Pos.	Code	Description	Qty	Notes
19	90357800	O-RING 7,66X1,78 (2031)	1	
18	90503800	ANTI-EXTR.RING D.9X12X1.5	1	
17	90358100	O-RING 8,73X1,78 - (108)	1	
16	90358700	O-RING D. 11,11X1,78 (114)	1	
14	36347770	MAX.PRESSURE NUT	1	
13	99126700	SCREW M4X5 UNI5929 S.S.	1	
6	94739500	SPRING D.11,3x34,5	1	
5	36348651	SLIDE WASHER	2	
4	36348170	PRESSURE ADJUST SCREW	1	
3	90384500	O-RING 18,72X2,6 (3075)	1	
2	10084666	REGULATION KNOB YOKE	1	
1	36350651	REGULATION KNOB - RED S. 53-58-59	1	