



E3C1021



TECHNICAL INFORMATION

Flow (L/min)	21
Flow (US Gpm)	5,55
Rotation regime (rpm)	1750
Pressure (MPa)	10
Pressure (bar)	100
Pressure (psi)	1450
Power (hp)	5,5
Power (kW)	4,04
Overall dimensions L x l x h (mm)	265x223x140
Weight (kg)	9,5



Documents

Male shaft (key)

Pump head with VH integrated valve

Hollow shaft (key) Ø22,2 - vers. Y

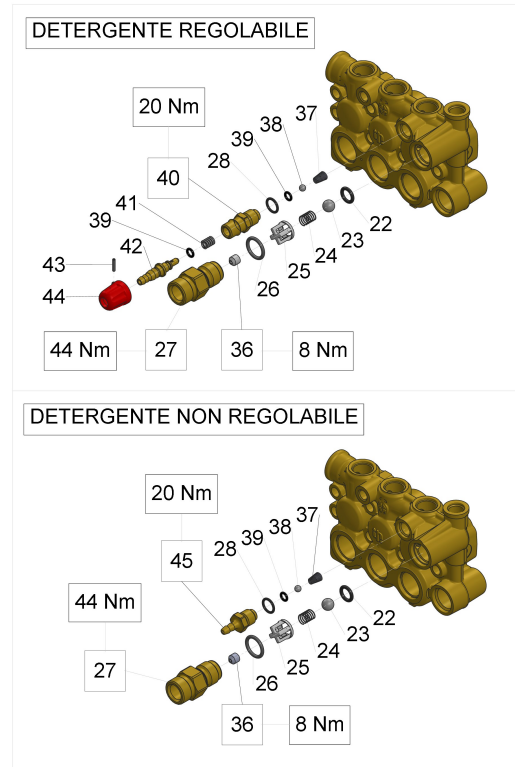
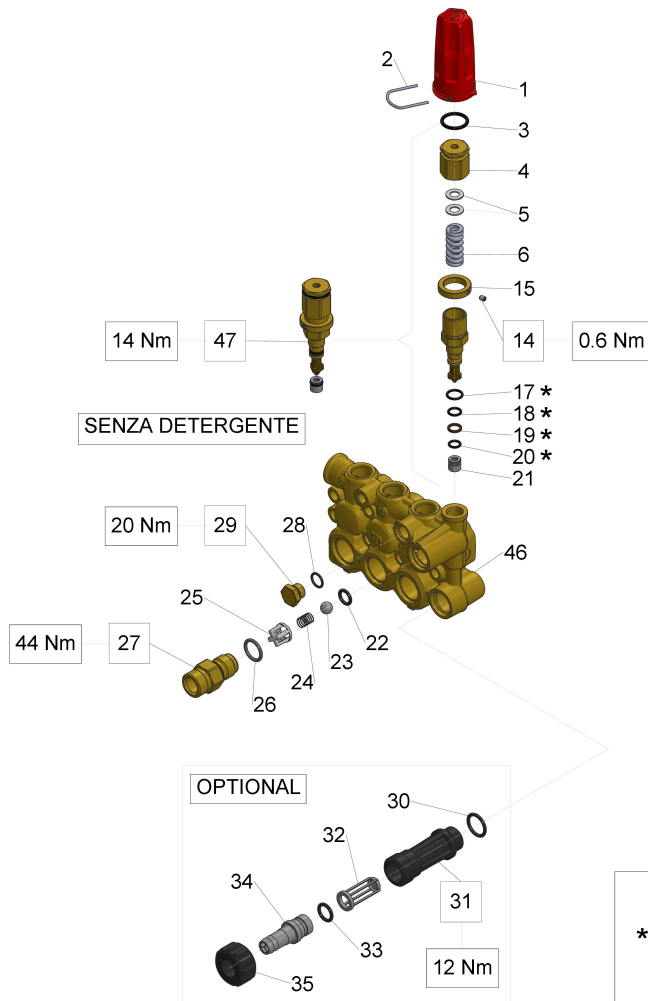
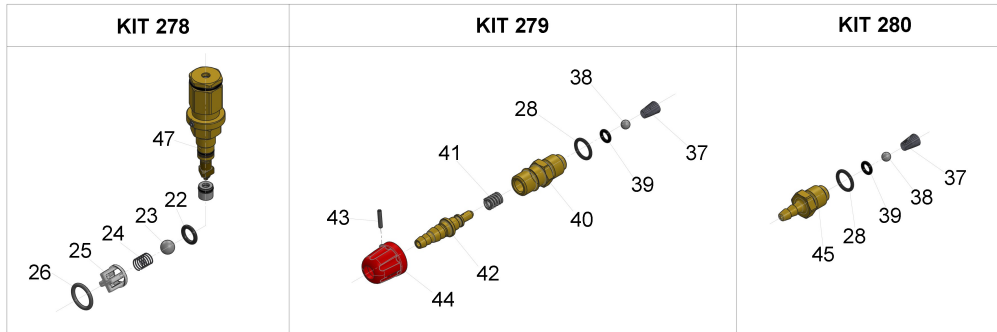
Illustration Male shaft (key)

Pos.	Code	Description	Qty	Notes
KIT290	34029001	KIT 290 CPL.SEAL D.20 59 SER.	1	
KIT285	34028501	KIT 285 PACKING D.20 59 SERIES	1	
KIT271	34027101	KIT 271 OIL SEAL D.15 58/59 SERIES	1	
KIT270	34027001	KIT 270 VALVE PLUGS 58 SERIES	1	
KIT269	34026901	KIT 269 INTAKE/DELIVERY VALVES	1	
63	50200074	PUMP FOOT	2	
62	96701600	WASHER 8,4	4	
61	99303700	SCREW M 8x16-5739	4	
60	91489200	KEY 8(h9)X7X35 UNI 6604/A	1	
59	90164800	OIL SEAL 30x55x7	1	
58	47151022	OPEN SIDE COVER (47-66)	1	
57	90358500	O-RING 10,82X1,78 (2043)	1	
56	98204250	PLUG G1/4"x12	1	
55	59160022	REAR CRANKCASE COVER	1	
54	90392200	O-RING D.133.02X 2,62(3525)	1	
53	98211300	ASTA LIVELLO OLIO G3/8x54 D.41		
52	97567800	SHIM D.74,5X104X0,1	1	
52	97568000	SHIM D.74.5X104X0.3	1	
51	90391300	O-RING 67,95X2,62 (3268)	2	
50	91837500	TAPER BEARING	2	
49	99303900	SCREW M 8x16 UNI 5931	12	
48	90075600	CIRCLIP D.45 (ZJ45)	1	
47	59020135	CRANKSHAFT C. 13	1	
46	70211801	OIL SIGHT GLASS	1	
45	90387700	O-RING 39,34X2,62 (3156)	1	
44	47151222	SIDE CRANKCASE COVER FOR OIL GAUGE	1	
43	99309900	SCREW M 8x35 UNI 5931	6	
42	59030001	CONNECTING ROD COMPLETE	3	
41	97739900	GUDGEON PIN D.14X34	3	
40	59050066	PISTON GUIDE	3	
39	90156550	OIL SEAL D.15X24X5/7	3	
38	58210451	PROTECTION	1	
37	59010022	PUMP CRANKCASE	1	
36	59211082	SPONGE GASKET D.3X103	1	
35	96699000	WASHER D.7.5X23X0.5	3	

Illustration Male shaft (key)

Pos.	Code	Description	Qty	Notes
34	96751400	WASHER 21,5X27X1,5	1	
33	98217600	PLUG G1/2X10	1	
32	96738000	WASHER 17,5X23X1,5	1	
31	98210000	PLUG G3/8X13	1	
30	59210870	RING FOR SEAL D.20	3	
29	90269000	PACKING D.20X28X6.5 LP (66)	3	
27	90361200	O-RING 31,47X1,78 (2125)	3	
26	59606101	PACKING RETAINER+SLEEVE D.20	3	
25	90513400	ANTI-EXTRUSION RING D.20X30X2	3	
24	90269100	PACKING D.20X30X6/3.7 H.P. 66 SERIES	3	
23	66100751	HEAD RING D.20 H.P.	3	
22	99317700	VITE M08x60 5931 12.9 G321A+M	8	
21	98213700	VALVE CAP M18X1,5X10	3	
20	90359300	O-RING 15,60X1,78 (2062)	3	
19	98196600	PLUG G1/8X8	1	
18	36719301	OUTLET VALVE	3	
17	36211151	VALVE CAGE	3	
16	94733300	SPRING D.6.2x10.5 S.S.	3	
15	36211276	SPHERICAL VALVE	3	
14	36211366	VALVE SEAT	3	
13	90367400	O-RING D. 12X2 (120-20)	3	
12	59040009	PISTON D. 20X42	3	
11	96690500	WASHER D.5X11.5x0.4 INOX+FKM58/59/63HT	3	
10	99169000	SCREW M05X55 SPEC. A2-70	3	
9	98222600	VALVE CAP M24X1,5X17	3	
8	90384700	O-RING 20,29X2,62(3081)	3	
7	36711501	INTAKE/DELIVERY VALVE	3	
6	90384100	O-RING 17,12X2,62 (3068)	3	
5	36200366	VALVE SEAT	3	
4	36200176	VALVE PLATE	3	
3	94737600	SPRING D. 9,4X14,8	3	
2	36202551	VALVE CAGE	3	
1	59120341	MANIFOLD FOR PISTON D.20	1	

Illustration Pump head with VH integrated valve



Se necessario, prima del montaggio lubrificare con grasso di vaselina cod.12.0021.00

* If necessary, lubricate with vaseline grease cod.12.0021.00 before assembly

Illustration Pump head with VH integrated valve

Pos.	Code	Description	Qty	Notes
KIT280	34028001	KIT 280 FIXED CHEM.INJECTOR 58-59	1	
KIT279	34027901	KIT 279 ADJUSTABLE CHEM. INJ. 58-59	1	
KIT278	34027801	KIT 278 BUILT-IN VALVE 58-59	1	
47	36605401	H REG.VALVE ASSY.	1	
46	59120841	MANIFOLD D.20 W/VALVE	1	
45	36349270	CHEM. HOSE BARB FITTING	1	
44	36348451	DETERGENT KNOB	1	
43	97661500	ELASTIC PIN D. 2X12	1	
42	36334270	SHUTTER WITH HOSE FITTING	1	
41	94733400	SPRING D.6.4X12.5	1	
40	36348270	CHEM. HOSE BARB FITTING	1	
39	90357300	O-RING D. 5,28X1,78 (2021)	2	
38	97478200	BALL 7/32(5,556) STAINLESS	1	
37	94821700	TAPER SPRING D.4,3X7,3X11	1	
36	10079866	INJECTOR NOZZLE D.2.20 ORANGE	1	
36	10079566	NOZZLE D. 2.00	1	
35	92982800	WING NUT G3/4	1	
34	36256951	INLET HOSE BARB FITTING (PL.)	1	
33	90382800	O-RING 12,37X2,62 (3050)	1	
32	92892500	FILTER D. 12X35	1	
31	36318251	INLET NIPPLE G 3/4	1	
30	90384100	O-RING 17,12X2,62 (3068)	1	
29	98204100	PLUG G1/4X9	1	
28	90358500	O-RING 10,82X1,78 (2043)	1	
27	36348870	NIPPLE D.3 M22X1.5 M	1	
27	36348970	NIPPLE D.3 G3/8F	1	
27	36347970	NIPPLE D.3 G3/8M	1	
27	36348770	NIPPLE D.3 3/8NPT M	1	
27	36349070	NIPPLE D.3 3/8NPT F	1	
26	90383900	O-RING 15,88X2,62 (121)	1	
25	36310451	VALVE GUIDE	1	
24	94735500	SPRING D. 8,5X12	1	
23	97483800	BALL 13/32 (10,319)	1	
22	90382300	O-RING 9,92X2,62 (112)	1	
21	36348366	REG. VALVE SEAT	1	
20	90357800	O-RING 7,66X1,78 (2031)	1	

Illustration Pump head with VH integrated valve

Pos.	Code	Description	Qty	Notes
19	90503800	ANTI-EXTR.RING D.9X12X1.5	1	
18	90358100	O-RING 8,73X1,78 - (108)	1	
17	90358700	O-RING D. 11,11X1,78 (114)	1	
15	36347770	MAX.PRESSURE NUT	1	
14	99126700	SCREW M4X5 UNI5929 S.S.	1	
6	94739500	SPRING D.11,3x34,5	1	
5	36348651	SLIDE WASHER	2	
4	36348170	PRESSURE ADJUST SCREW	1	
3	90384500	O-RING 18,72X2,6 (3075)	1	
2	10084666	REGULATION KNOB YOKE	1	
1	36350651	REGULATION KNOB - RED S. 53-58-59	1	

Illustration Hollow shaft (key) Ø22,2 - vers. Y

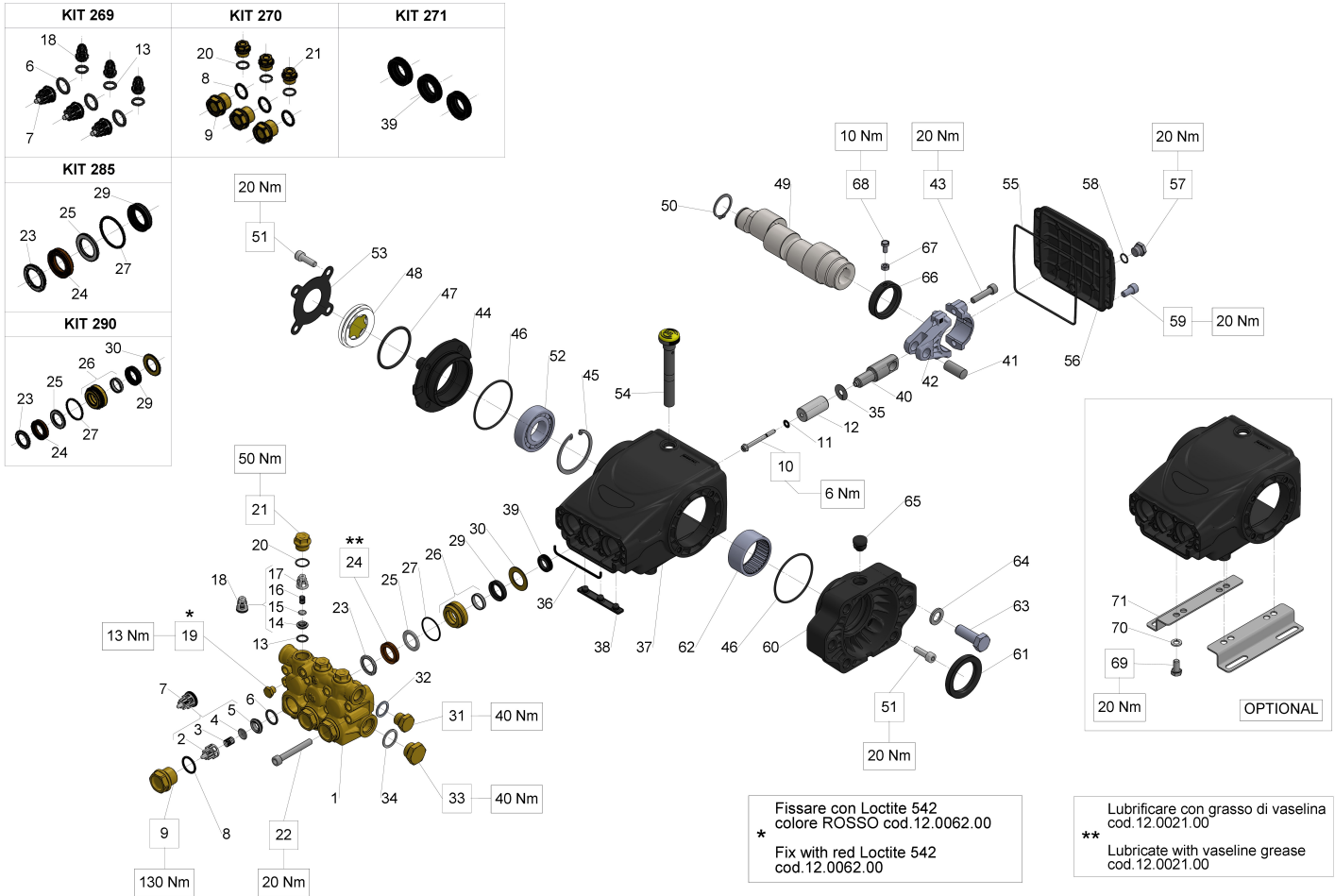


Illustration Hollow shaft (key) Ø22,2 - vers. Y

Pos.	Code	Description	Qty	Notes
KIT290	34029001	KIT 290 CPL.SEAL D.20 59 SER.	1	
KIT285	34028501	KIT 285 PACKING D.20 59 SERIES	1	
KIT271	34027101	KIT 271 OIL SEAL D.15 58/59 SERIES	1	
KIT270	34027001	KIT 270 VALVE PLUGS 58 SERIES	1	
KIT269	34026901	KIT 269 INTAKE/DELIVERY VALVES	1	
71	50200074	PUMP FOOT	2	
70	96701600	WASHER 8,4	4	
69	99303700	SCREW M 8x16-5739	4	
68	70227034	VITE M6X12 CON INCAVO COMPLETA	1	
67	92202500	NUT M6 UNI 5588 6S	1	
66	71228971	ANELLO PER ALBERO D.40 H.PACK	1	
65	90206500	PLUG FOR BORE D.17 - TTN19	1	
64	96728200	WASHER 15.0x24.0x2.5 U1749	2	
63	99484800	SCREW M14x40 5739 8.8 ZINC 871034154	2	
62	91858500	NEEDLE BEARING HK5025	1	
61	90169000	OIL SEAL D. 45X62X8	1	
60	10087122	FLANGE FOR HYDR.MOTOR SAE-B (S.59)	1	
59	99303900	SCREW M 8x16 UNI 5931	4	
58	90358500	O-RING 10,82X1,78 (2043)	1	
57	98204250	PLUG G1/4"x12	1	
56	59160022	REAR CRANKCASE COVER	1	
55	90392200	O-RING D.133.02X 2,62(3525)	1	
54	98211300	ASTA LIVELLO OLIO G3/8x54 D.41		
53	66150274	SIDE COVER	1	
52	91837600	ROLLER BEARING NUP206ECP	1	
51	99306900	SCREW M 8x25 UNI 5931	8	
50	90066700	CIRCLIP D. 30 UNI 7435	1	
49	59021365	CRANKSHAFT C.13 (D.22.2 HOLLOW)	1	
48	44211801	SPACER+OIL LEVEL GAUGE	1	
47	90409700	O-RING 55,56X3,53 (159)	1	
46	90391300	O-RING 67,95X2,62 (3268)	2	

Illustration Hollow shaft (key) Ø22,2 - vers. Y

Pos.	Code	Description	Qty	Notes
45	90085000	CIRCLIP D. 62 UNI 7437	1	
44	59150022	SIDE CRANKCASE COVER	1	
43	99309900	SCREW M 8x35 UNI 5931	6	
42	59030001	CONNECTING ROD COMPLETE	3	
41	97739900	GUDGEON PIN D.14X34	3	
40	59050066	PISTON GUIDE	3	
39	90156550	OIL SEAL D.15X24X5/7	3	
38	58210451	PROTECTION	1	
37	59010022	PUMP CRANKCASE	1	
36	59211082	SPONGE GASKET D.3X103	1	
35	96699000	WASHER D.7.5X23X0.5	3	
34	96751400	WASHER 21,5X27X1,5	1	
33	98217600	PLUG G1/2X10	1	
32	96738000	WASHER 17,5X23X1,5	1	
31	98210000	PLUG G3/8X13	1	
30	59210870	RING FOR SEAL D.20	3	
29	90269000	PACKING D.20X28X6.5 LP (66)	3	
27	90361200	O-RING 31,47X1,78 (2125)	3	
26	59606101	PACKING RETAINER+SLEEVE D.20	3	
25	90513400	ANTI-EXTRUSION RING D.20X30X2	3	
24	90269100	PACKING D.20X30X6/3.7 H.P. 66 SERIES	3	
23	66100751	HEAD RING D.20 H.P.	3	
22	99317700	VITE M08x60 5931 12.9 G321A+M	8	
21	98213700	VALVE CAP M18X1,5X10	3	
20	90359300	O-RING 15,60X1,78 (2062)	3	
19	98196600	PLUG G1/8X8	1	
18	36719301	OUTLET VALVE	3	
17	36211151	VALVE CAGE	3	
16	94733300	SPRING D.6.2x10.5 S.S.	3	
15	36211276	SPHERICAL VALVE	3	
14	36211366	VALVE SEAT	3	
13	90367400	O-RING D. 12X2 (120-20)	3	
12	59040009	PISTON D. 20X42	3	
11	96690500	WASHER D.5X11.5x0.4 INOX+FKM58/59/63HT	3	
10	99169000	SCREW M05X55 SPEC. A2-70	3	
9	98222600	VALVE CAP M24X1,5X17	3	
8	90384700	O-RING 20,29X2,62(3081)	3	

Illustration Hollow shaft (key) Ø22,2 - vers. Y

Pos.	Code	Description	Qty	Notes
7	36711501	INTAKE/DELIVERY VALVE	3	
6	90384100	O-RING 17,12X2,62 (3068)	3	
5	36200366	VALVE SEAT	3	
4	36200176	VALVE PLATE	3	
3	94737600	SPRING D. 9,4X14,8	3	
2	36202551	VALVE CAGE	3	
1	59120341	MANIFOLD FOR PISTON D.20	1	