



VHT7095



TECHNICAL INFORMATION

Flow (L/min)	102 / 95 / 85
Flow (US Gpm)	27 / 25 / 22,5
Rotation regime (rpm)	1450 / 1350 / 1200
Pressure (MPa)	10
Pressure (bar)	100
Pressure (psi)	1450
Power (hp)	26,5 / 24,7 / 22,1
Power (kW)	19,5 / 18,2 / 16,3
Overall dimensions L x l x h (mm)	388x340,5x195
Weight (kg)	37



Documents

Male shaft (key) - GAS

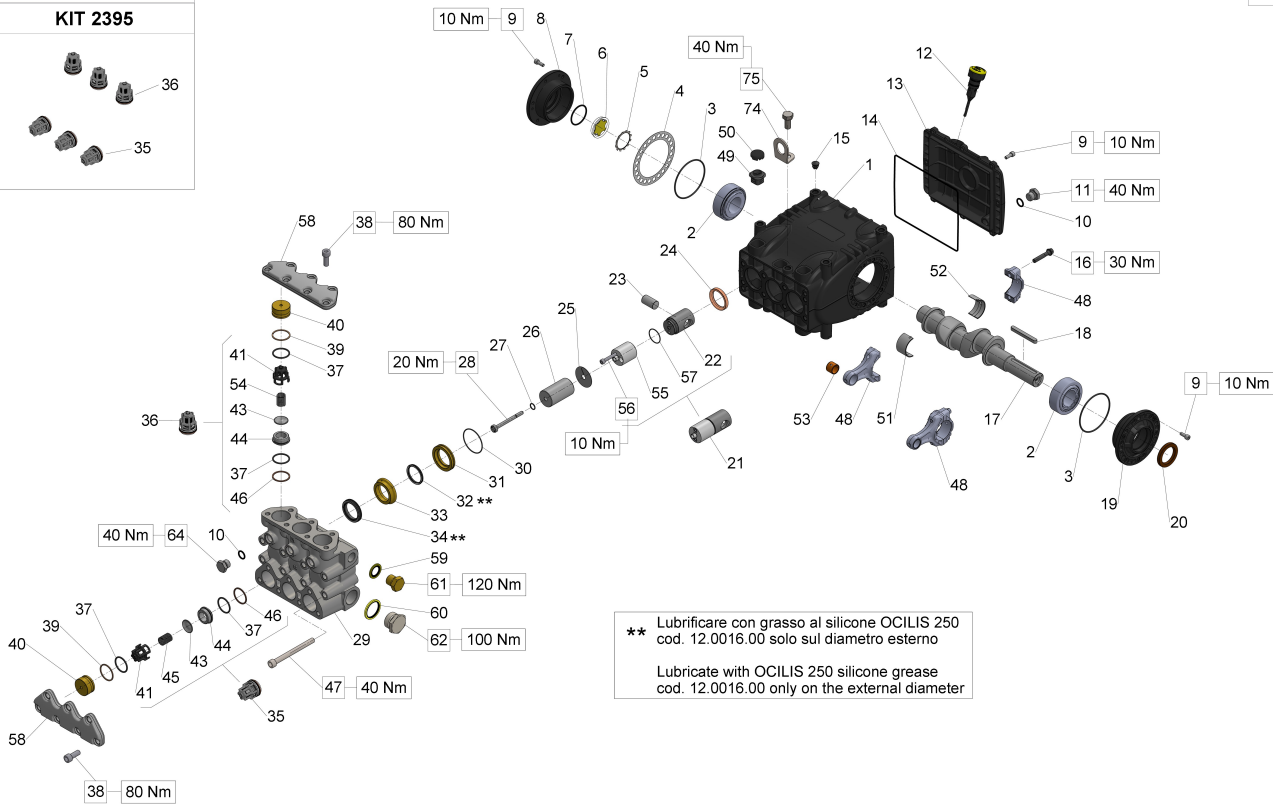
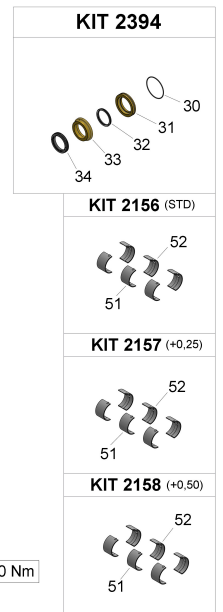
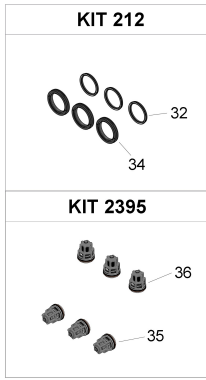
Male shaft (key) - NPT

Male shaft (key) - GAS + flange A - GAS

Hollow shaft (spline) + SAE B flange - GAS

Hollow shaft (spline) + SAE B flange - NPT

Illustration Male shaft (key) - GAS



** Lubrificare con grasso al silicone OCILIS 250 cod. 12.0016.00 solo sul diametro esterno
 Lubricate with OCILIS 250 silicone grease cod. 12.0016.00 only on the external diameter

Illustration Male shaft (key) - GAS

Pos.	Code	Description	Qty	Notes
KIT2395	34239501		1	
KIT2394	34239401		1	
KIT2158	34215801	KIT 2158*CONROD BUSHINGS +0,50	1	
KIT2157	34215701	KIT 2157*CONROD BUSHINGS +0,25	1	
KIT2156	34215601	KIT 2156*CONROD BUSHING	1	
KIT212	34021201		1	
75	99426600	VITE TE M12X25-UNI5739 ZINC.	1	
74	71223074	STAFFA DI SOLLEVAMENTO	1	
64	98209900	PLUG G. 3/8X13 NICKEL	3	
62	98232600		1	
61	98218200		1	
60	93198500		1	
59	93197200		1	
58	70222341		2	
57	90352800	O-RING D. 29.00x1.50 NBR 70SH	3	
56	99192500	SCREW M06X35 5931 A2-70	6	
55	70050266	PISTON GUIDE ROD	3	
54	94745100	SPRING Dm. 16.0X37.0 INOX	3	
53	90910000	CONROD BUSHING (SMALL END) S.70	3	
52	90922300	LOWER HALF CONROD BUSHING (BIG END) S.70	3	
52	90922500	LOWER HALF CONROD BUSHING +0.50 (BIG END) S.70	3	
52	90922400	LOWER HALF CONROD BUSHING +0.25 (BIG END) S.70	3	
51	90922000	UPPER HALF CONROD BUSHING (BIG END) S.70	3	
51	90922200	UPPER HALF CONROD BUSHING +0.5 (BIG END) S.70	3	
51	90922100	UPPER HALF CONROD BUSHING +0.25 (BIG END) S.70	3	
50	71225951	PLUG CAP	3	
49	70222551	CRANKCASE PLUG	6	
48	70030501	CONNECTING ROD COMPLETE	3	
47	99381600	SCREW M10X110 UNI5931 8.8	8	
46	90517800		6	
45	94745000	SPRING D. 16X27,5	3	

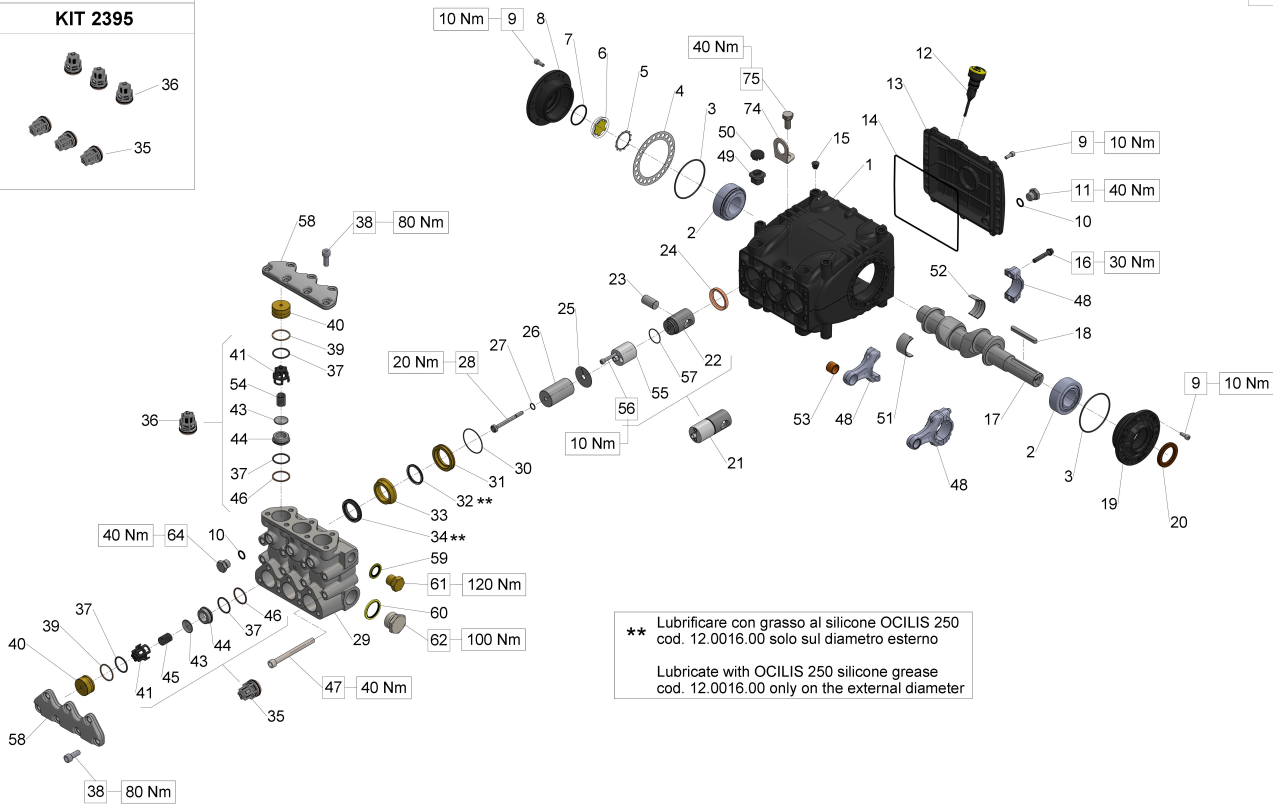
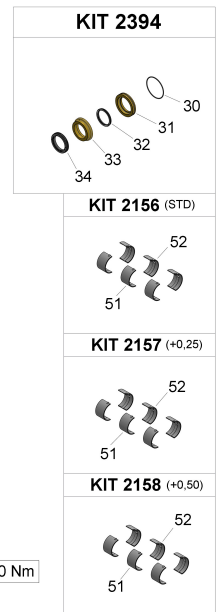
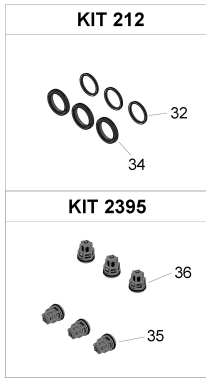
Illustration Male shaft (key) - GAS

Pos.	Code	Description	Qty	Notes
44	36204866	VALVE SEAT (70HT)	6	
43	36201076	VALVE PLATE	6	
41	36204705	VALVE CAGE S.S. (70 SERIES)	6	
40	70211670		6	
39	90518000	ANTI-EXTR.RING D.32.4X36.5X1.5	6	
38	99367100		14	
37	90386550		12	
36	36728901		3	
35	36726501		3	
34	90241000		3	
33	70216570		3	
32	90240000		3	
31	70080570		3	
30	90362650		3	
29	70124141		1	
28	70224136	PISTON BOLT	3	
27	90358450		3	
26	70040509	PISTON D.36X63	3	
25	96709900	WASHER D.10X45	3	
24	90167700	OIL SEAL D.36X47X7	3	
23	97742000	GUDGEON PIN D.18X36	3	
22	70050115	PISTON GUIDE T.N.	3	
21	70606801	PISTON GUIDE ASSY	3	
20	90166800	OIL SEAL D.35X52X7	1	
19	70150022	BEARING COVER (PTO SIDE)	1	
18	91490000	KEY 8h9X7X70 UNI 6604/A	1	
17	70020035		1	
16	99312300	CONN.ROD BOLT M8X1X42	6	
15	98200500	PLUG D. 15	5	
14	90394200	OR D.190.17X2.62 NBR 70SH	1	
13	70160022		1	
12	98211500	OIL DIPSTICK D.21,5X70	1	
11	98210050	PLUG G3/8x13 TE22	1	
10	90383300	O-RING 13,95X2,62 (3056)	4	
9	99185400	SCREW M6X16 UNI 5931 8.8 Z.	20	
8	70150122	BEARING COVER (OIL GLASS SIDE)	1	
7	90387700	O-RING 39,34X2,62 (3156)	1	
6	70211801	OIL SIGHT GLASS	1	

Illustration Male shaft (key) - GAS

Pos.	Code	Description	Qty	Notes
5	90075600	CIRCLIP D.45 (Z145)	1	
4	70220381	SHIM 0.25 MM.	1	
4	70220081	SHIM 0.1 MM.	1	
3	90391500	O-RING D. 80.6X2.62 (3318)	2	
2	91847700	TAPER ROLLER BEARING 33207/Q	2	
1	70010022	CRANKCASE	1	

Illustration Male shaft (key) - NPT



** Lubrificare con grasso al silicone OCILIS 250 cod. 12.0016.00 solo sul diametro esterno
 Lubricate with OCILIS 250 silicone grease cod. 12.0016.00 only on the external diameter

Illustration Male shaft (key) - NPT

Pos.	Code	Description	Qty	Notes
KIT2395	34239501		1	
KIT2394	34239401		1	
KIT2158	34215801	KIT 2158*CONROD BUSHINGS +0,50	1	
KIT2157	34215701	KIT 2157*CONROD BUSHINGS +0,25	1	
KIT2156	34215601	KIT 2156*CONROD BUSHING	1	
KIT212	34021201		1	
75	99426600	VITE TE M12X25-UNI5739 ZINC.	1	
74	71223074	STAFFA DI SOLLEVAMENTO	1	
64	98209900	PLUG G. 3/8X13 NICKEL	3	
62	98232600		1	
61	98218200		1	
60	93198500		1	
59	93197200		1	
58	70222341		2	
57	90352800	O-RING D. 29.00x1.50 NBR 70SH	3	
56	99192500	SCREW M06X35 5931 A2-70	6	
55	70050266	PISTON GUIDE ROD	3	
54	94745100	SPRING Dm. 16.0X37.0 INOX	3	
53	90910000	CONROD BUSHING (SMALL END) S.70	3	
52	90922300	LOWER HALF CONROD BUSHING (BIG END) S.70	3	
52	90922500	LOWER HALF CONROD BUSHING +0.50 (BIG END) S.70	3	
52	90922400	LOWER HALF CONROD BUSHING +0.25 (BIG END) S.70	3	
51	90922000	UPPER HALF CONROD BUSHING (BIG END) S.70	3	
51	90922200	UPPER HALF CONROD BUSHING +0.5 (BIG END) S.70	3	
51	90922100	UPPER HALF CONROD BUSHING +0.25 (BIG END) S.70	3	
50	71225951	PLUG CAP	3	
49	70222551	CRANKCASE PLUG	6	
48	70030501	CONNECTING ROD COMPLETE	3	
47	99381600	SCREW M10X110 UNI5931 8.8	8	
46	90517800		6	
45	94745000	SPRING D. 16X27,5	3	

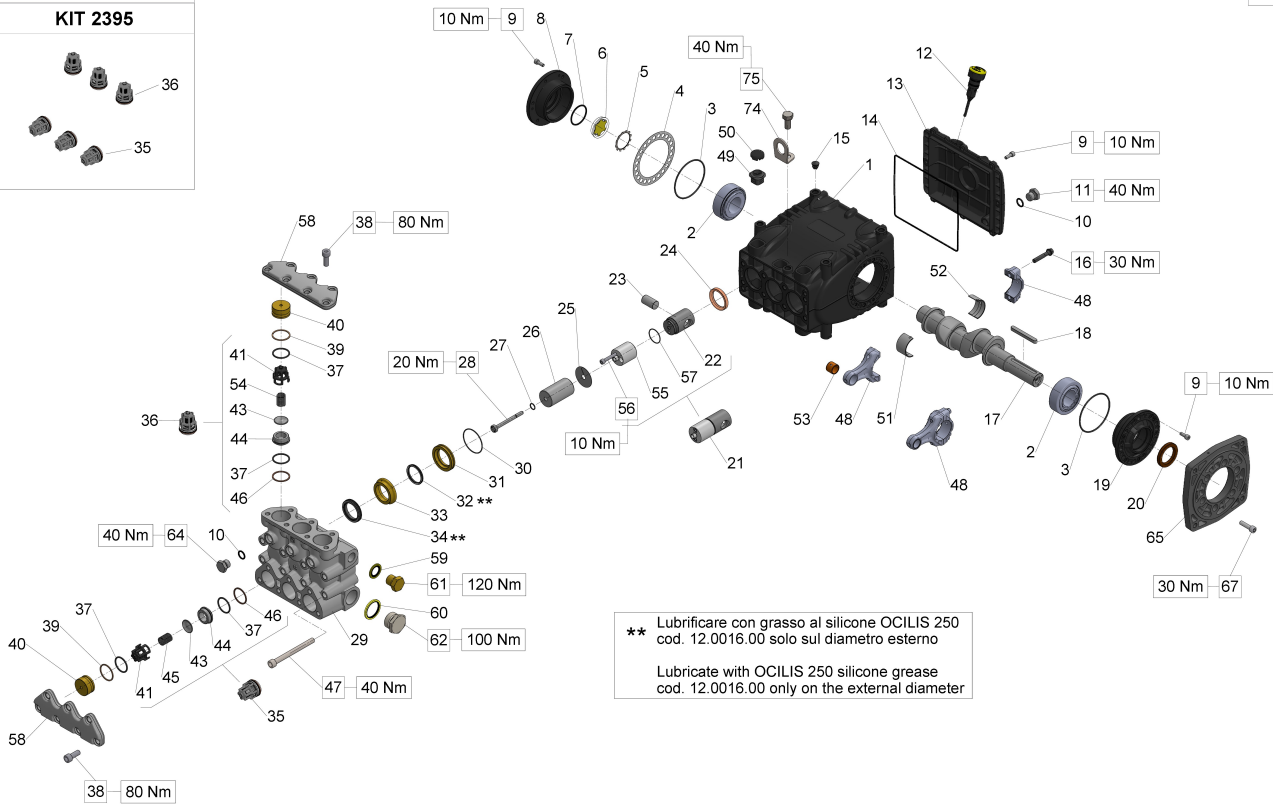
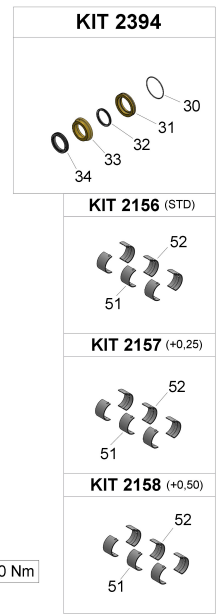
Illustration Male shaft (key) - NPT

Pos.	Code	Description	Qty	Notes
44	36204866	VALVE SEAT (70HT)	6	
43	36201076	VALVE PLATE	6	
41	36204705	VALVE CAGE S.S. (70 SERIES)	6	
40	70211670		6	
39	90518000	ANTI-EXTR.RING D.32.4X36.5X1.5	6	
38	99367100		14	
37	90386550		12	
36	36728901		3	
35	36726501		3	
34	90241000		3	
33	70216570		3	
32	90240000		3	
31	70080570		3	
30	90362650		3	
29	70124241		1	
28	70224136	PISTON BOLT	3	
27	90358450		3	
26	70040509	PISTON D.36X63	3	
25	96709900	WASHER D.10X45	3	
24	90167700	OIL SEAL D.36X47X7	3	
23	97742000	GUDGEON PIN D.18X36	3	
22	70050115	PISTON GUIDE T.N.	3	
21	70606801	PISTON GUIDE ASSY	3	
20	90166800	OIL SEAL D.35X52X7	1	
19	70150022	BEARING COVER (PTO SIDE)	1	
18	91490000	KEY 8h9X7X70 UNI 6604/A	1	
17	70020035		1	
16	99312300	CONN.ROD BOLT M8X1X42	6	
15	98200500	PLUG D. 15	5	
14	90394200	OR D.190.17X2.62 NBR 70SH	1	
13	70160022		1	
12	98211500	OIL DIPSTICK D.21,5X70	1	
11	98210050	PLUG G3/8x13 TE22	1	
10	90383300	O-RING 13,95X2,62 (3056)	4	
9	99185400	SCREW M6X16 UNI 5931 8.8 Z.	20	
8	70150122	BEARING COVER (OIL GLASS SIDE)	1	
7	90387700	O-RING 39,34X2,62 (3156)	1	
6	70211801	OIL SIGHT GLASS	1	

Illustration Male shaft (key) - NPT

Pos.	Code	Description	Qty	Notes
5	90075600	CIRCLIP D.45 (Z145)	1	
4	70220381	SHIM 0.25 MM.	1	
4	70220081	SHIM 0.1 MM.	1	
3	90391500	O-RING D. 80.6X2.62 (3318)	2	
2	91847700	TAPER ROLLER BEARING 33207/Q	2	
1	70010022	CRANKCASE	1	

Illustration Male shaft (key) - GAS + flange A - GAS



** Lubrificare con grasso al silicone OCILIS 250 cod. 12.0016.00 solo sul diametro esterno
 Lubricate with OCILIS 250 silicone grease cod. 12.0016.00 only on the external diameter

Illustration Male shaft (key) - GAS + flange A - GAS

Pos.	Code	Description	Qty	Notes
KIT2395	34239501		1	
KIT2394	34239401		1	
KIT2158	34215801	KIT 2158*CONROD BUSHINGS +0,50	1	
KIT2157	34215701	KIT 2157*CONROD BUSHINGS +0,25	1	
KIT2156	34215601	KIT 2156*CONROD BUSHING	1	
KIT212	34021201		1	
75	99426600	VITE TE M12X25-UNI5739 ZINC.	1	
74	71223074	STAFFA DI SOLLEVAMENTO	1	
67	99308400	SCREW M 8x30 UNI 5931	6	
65	10067320	FLANGE FOR HYDRAULIC MOTOR1 KE TYPE A		
64	98209900	PLUG G. 3/8X13 NICKEL	3	
62	98232600		1	
61	98218200		1	
60	93198500		1	
59	93197200		1	
58	70222341		2	
57	90352800	O-RING D. 29.00x1.50 NBR 70SH 3		
56	99192500	SCREW M06X35 5931 A2-70	6	
55	70050266	PISTON GUIDE ROD	3	
54	94745100	SPRING Dm. 16.0X37.0 INOX	3	
53	90910000	CONROD BUSHING (SMALL END) 3 S.70		
52	90922300	LOWER HALF CONROD BUSHING 3 (BIG END) S.70		
52	90922500	LOWER HALF CONROD BUSHING 3 +0.50 (BIG END) S.70		
52	90922400	LOWER HALF CONROD BUSHING 3 +0.25 (BIG END) S.70		
51	90922000	UPPER HALF CONROD BUSHING 3 (BIG END) S.70		
51	90922200	UPPER HALF CONROD BUSHING 3 +0.5 (BIG END) S.70		
51	90922100	UPPER HALF CONROD BUSHING 3 +0.25 (BIG END) S.70		
50	71225951	PLUG CAP	3	
49	70222551	CRANKCASE PLUG	6	
48	70030501	CONNECTING ROD COMPLETE	3	
47	99381600	SCREW M10X110 UNI5931 8.8	8	

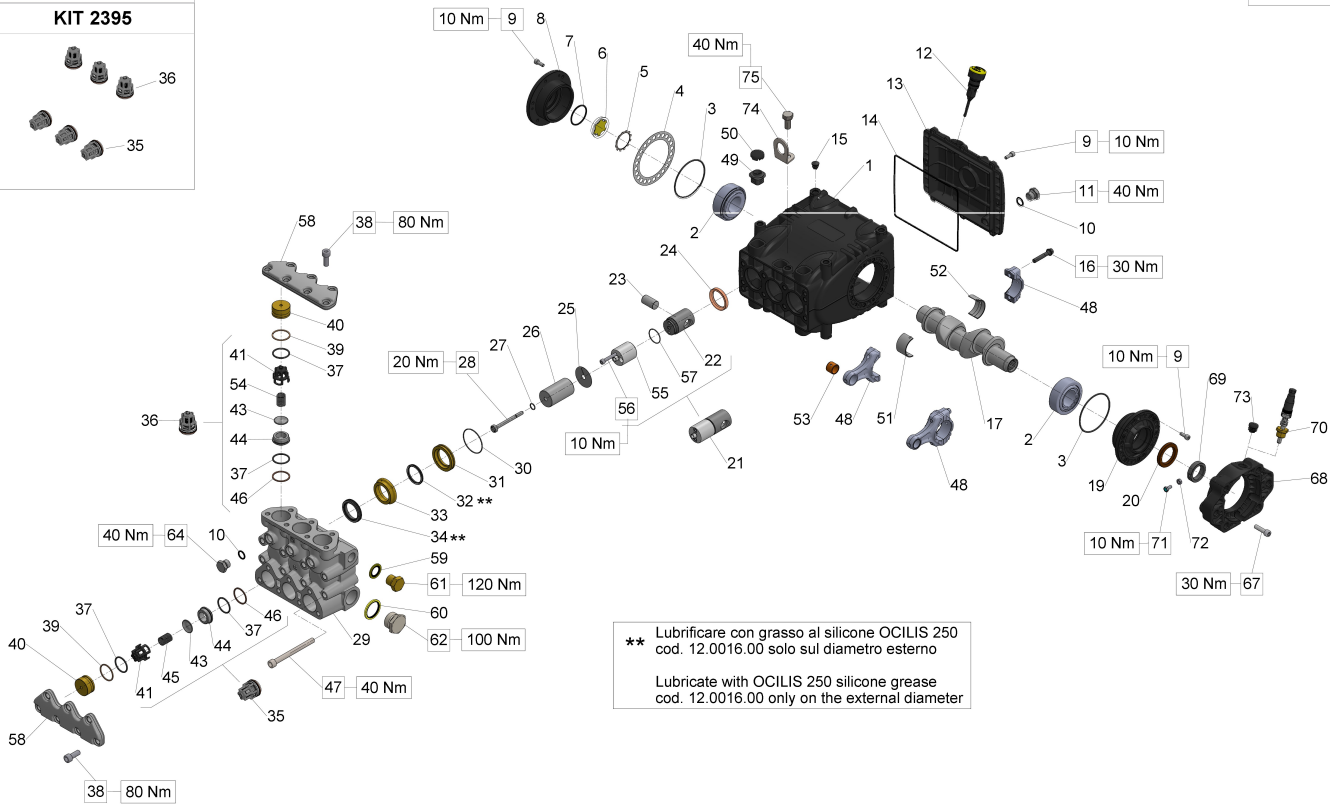
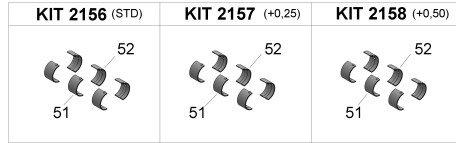
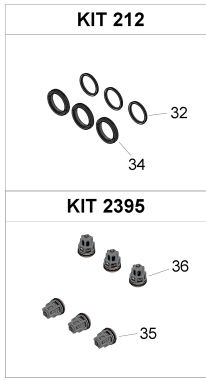
Illustration Male shaft (key) - GAS + flange A - GAS

Pos.	Code	Description	Qty	Notes
46	90517800		6	
45	94745000	SPRING D. 16X27,5	3	
44	36204866	VALVE SEAT (70HT)	6	
43	36201076	VALVE PLATE	6	
41	36204705	VALVE CAGE S.S. (70 SERIES)	6	
40	70211670		6	
39	90518000	ANTI-EXTR.RING D.32.4X36.5X1.5	6	
38	99367100		14	
37	90386550		12	
36	36728901		3	
35	36726501		3	
34	90241000		3	
33	70216570		3	
32	90240000		3	
31	70080570		3	
30	90362650		3	
29	70124141		1	
28	70224136	PISTON BOLT	3	
27	90358450		3	
26	70040509	PISTON D.36X63	3	
25	96709900	WASHER D.10X45	3	
24	90167700	OIL SEAL D.36X47X7	3	
23	97742000	GUDGEON PIN D.18X36	3	
22	70050115	PISTON GUIDE T.N.	3	
21	70606801	PISTON GUIDE ASSY	3	
20	90166800	OIL SEAL D.35X52X7	1	
19	70150022	BEARING COVER (PTO SIDE)	1	
18	91490000	KEY 8h9X7X70 UNI 6604/A	1	
17	70020035		1	
16	99312300	CONN.ROD BOLT M8X1X42	6	
15	98200500	PLUG D. 15	5	
14	90394200	OR D.190.17X2.62 NBR 70SH	1	
13	70160022		1	
12	98211500	OIL DIPSTICK D.21,5X70	1	
11	98210050	PLUG G3/8x13 TE22	1	
10	90383300	O-RING 13,95X2,62 (3056)	4	
9	99185400	SCREW M6X16 UNI 5931 8.8 Z.	20	
8	70150122	BEARING COVER (OIL GLASS SIDE)	1	

Illustration Male shaft (key) - GAS + flange A - GAS

Pos.	Code	Description	Qty	Notes
7	90387700	O-RING 39,34X2,62 (3156)	1	
6	70211801	OIL SIGHT GLASS	1	
5	90075600	CIRCLIP D.45 (ZJ45)	1	
4	70220381	SHIM 0.25 MM.	1	
4	70220081	SHIM 0.1 MM.	1	
3	90391500	O-RING D. 80.6X2.62 (3318)	2	
2	91847700	TAPER ROLLER BEARING 33207/Q	2	
1	70010022	CRANKCASE	1	

Illustration Hollow shaft (spline) + SAE B flange - GAS



** Lubrificare con grasso al silicone OCILIS 250 cod. 12.0016.00 solo sul diametro esterno
 Lubricate with OCILIS 250 silicone grease cod. 12.0016.00 only on the external diameter

Illustration Hollow shaft (spline) + SAE B flange - GAS

Pos.	Code	Description	Qty	Notes
KIT2395	34239501		1	
KIT2394	34239401		1	
KIT2158	34215801	KIT 2158*CONROD BUSHINGS +0,50	1	
KIT2157	34215701	KIT 2157*CONROD BUSHINGS +0,25	1	
KIT2156	34215601	KIT 2156*CONROD BUSHING	1	
KIT212	34021201		1	
75	99426600	VITE TE M12X25-UNI5739 ZINC.	1	
74	71223074	STAFFA DI SOLLEVAMENTO	1	
73	90206500	PLUG FOR BORE D.17 - TTN19	1	
72	92202500	NUT M6 UNI 5588 6S	1	
71	70227034	VITE M6X12 CON INCAVO COMPLETA	1	
70	ZRPM1	ZRPM1	1	
69	70226771	ANELLO PER ALBERO D.30 H.PACK	1	
68	10085322	FLANGE FOR HYDRAULIC MOTOR1 SAE-B S.70	1	
67	99308400	SCREW M 8x30 UNI 5931	6	
64	98209900	PLUG G. 3/8X13 NICKEL	3	
62	98232600		1	
61	98218200		1	
60	93198500		1	
59	93197200		1	
58	70222341		2	
57	90352800	O-RING D. 29.00x1.50 NBR 70SH 3	3	
56	99192500	SCREW M06X35 5931 A2-70	6	
55	70050266	PISTON GUIDE ROD	3	
54	94745100	SPRING Dm. 16.0X37.0 INOX	3	
53	90910000	CONROD BUSHING (SMALL END) 3 S.70	3	
52	90922300	LOWER HALF CONROD BUSHING 3 (BIG END) S.70	3	
52	90922500	LOWER HALF CONROD BUSHING 3 +0.50 (BIG END) S.70	3	
52	90922400	LOWER HALF CONROD BUSHING 3 +0.25 (BIG END) S.70	3	
51	90922000	UPPER HALF CONROD BUSHING 3 (BIG END) S.70	3	
51	90922200	UPPER HALF CONROD BUSHING 3 +0.5 (BIG END) S.70	3	

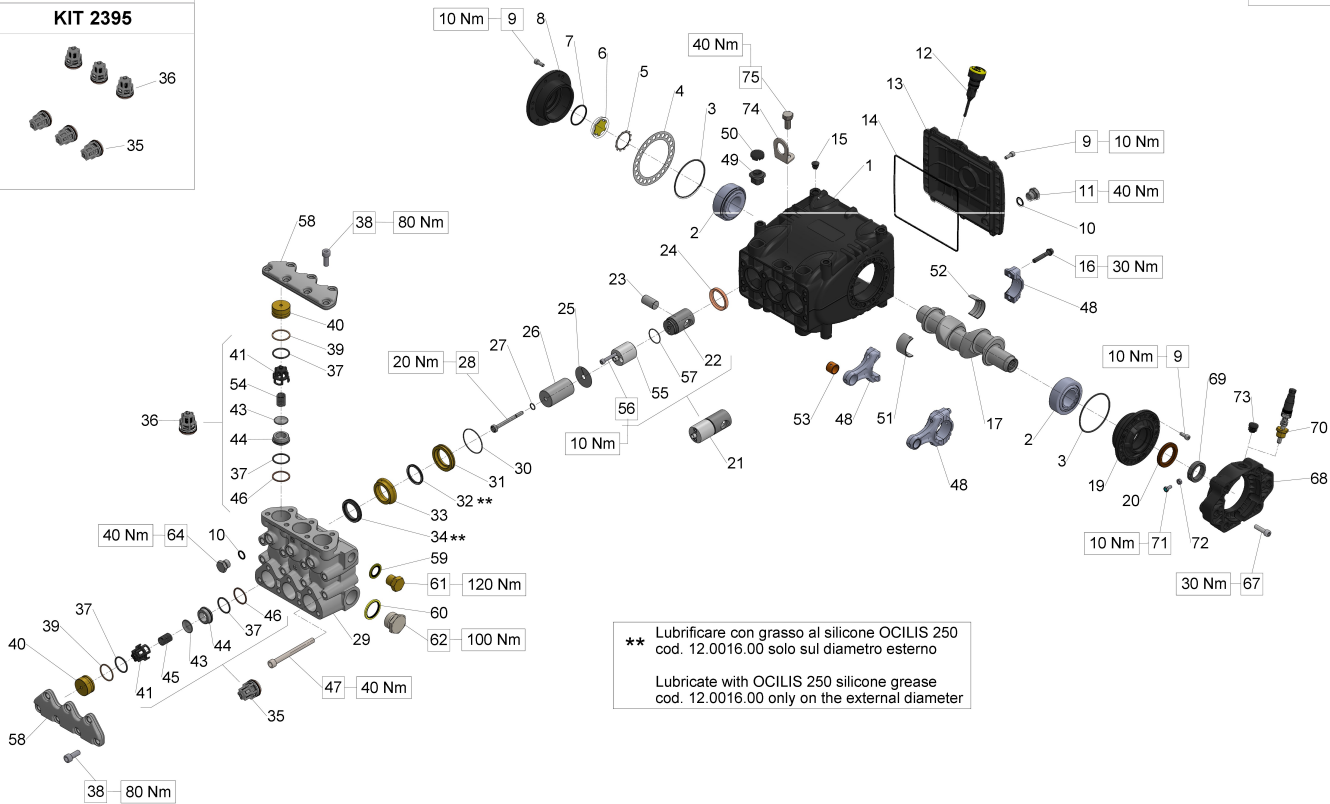
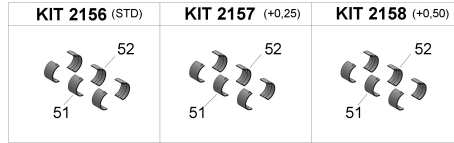
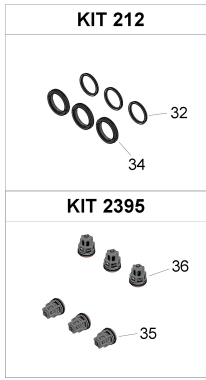
Illustration Hollow shaft (spline) + SAE B flange - GAS

Pos.	Code	Description	Qty	Notes
51	90922100	UPPER HALF CONROD BUSHING +0.25 (BIG END) S.70	3	
50	71225951	PLUG CAP	3	
49	70222551	CRANKCASE PLUG	6	
48	70030501	CONNECTING ROD COMPLETE	3	
47	99381600	SCREW M10X110 UNI5931 8.8	8	
46	90517800		6	
45	94745000	SPRING D. 16X27,5	3	
44	36204866	VALVE SEAT (70HT)	6	
43	36201076	VALVE PLATE	6	
41	36204705	VALVE CAGE S.S. (70 SERIES)	6	
40	70211670		6	
39	90518000	ANTI-EXTR.RING D.32.4X36.5X1.5	6	
38	99367100		14	
37	90386550		12	
36	36728901		3	
35	36726501		3	
34	90241000		3	
33	70216570		3	
32	90240000		3	
31	70080570		3	
30	90362650		3	
29	70124141		1	
28	70224136	PISTON BOLT	3	
27	90358450		3	
26	70040509	PISTON D.36X63	3	
25	96709900	WASHER D.10X45	3	
24	90167700	OIL SEAL D.36X47X7	3	
23	97742000	GUDGEON PIN D.18X36	3	
22	70050115	PISTON GUIDE T.N.	3	
21	70606801	PISTON GUIDE ASSY	3	
20	90166800	OIL SEAL D.35X52X7	1	
19	70150022	BEARING COVER (PTO SIDE)	1	
17	70020835		1	
16	99312300	CONN.ROD BOLT M8X1X42	6	
15	98200500	PLUG D. 15	5	
14	90394200	OR D.190.17X2.62 NBR 70SH	1	
13	70160022		1	

Illustration Hollow shaft (spline) + SAE B flange - GAS

Pos.	Code	Description	Qty	Notes
12	98211500	OIL DIPSTICK D.21,5X70	1	
11	98210050	PLUG G3/8x13 TE22	1	
10	90383300	O-RING 13,95X2,62 (3056)	4	
9	99185400	SCREW M6X16 UNI 5931 8.8 Z.	20	
8	70150122	BEARING COVER (OIL GLASS SIDE)	1	
7	90387700	O-RING 39,34X2,62 (3156)	1	
6	70211801	OIL SIGHT GLASS	1	
5	90075600	CIRCLIP D.45 (ZJ45)	1	
4	70220381	SHIM 0.25 MM.	1	
4	70220081	SHIM 0.1 MM.	1	
3	90391500	O-RING D. 80.6X2.62 (3318)	2	
2	91847700	TAPER ROLLER BEARING 33207/Q	2	
1	70010022	CRANKCASE	1	

Illustration Hollow shaft (spline) + SAE B flange - NPT



** Lubrificare con grasso al silicone OCILIS 250 cod. 12.0016.00 solo sul diametro esterno
 Lubricate with OCILIS 250 silicone grease cod. 12.0016.00 only on the external diameter

Illustration Hollow shaft (spline) + SAE B flange - NPT

Pos.	Code	Description	Qty	Notes
KIT2395	34239501		1	
KIT2394	34239401		1	
KIT2158	34215801	KIT 2158*CONROD BUSHINGS +0,50	1	
KIT2157	34215701	KIT 2157*CONROD BUSHINGS +0,25	1	
KIT2156	34215601	KIT 2156*CONROD BUSHING	1	
KIT212	34021201		1	
75	99426600	VITE TE M12X25-UNI5739 ZINC.	1	
74	71223074	STAFFA DI SOLLEVAMENTO	1	
73	90206500	PLUG FOR BORE D.17 - TTN19	1	
72	92202500	NUT M6 UNI 5588 6S	1	
71	70227034	VITE M6X12 CON INCAVO COMPLETA	1	
70	ZRPM1	ZRPM1	1	
69	70226771	ANELLO PER ALBERO D.30 H.PACK	1	
68	10085322	FLANGE FOR HYDRAULIC MOTOR1 SAE-B S.70	1	
67	99308400	SCREW M 8x30 UNI 5931	6	
64	98209900	PLUG G. 3/8X13 NICKEL	3	
62	98232600		1	
61	98218200		1	
60	93198500		1	
59	93197200		1	
58	70222341		2	
57	90352800	O-RING D. 29.00x1.50 NBR 70SH 3	3	
56	99192500	SCREW M06X35 5931 A2-70	6	
55	70050266	PISTON GUIDE ROD	3	
54	94745100	SPRING Dm. 16.0X37.0 INOX	3	
53	90910000	CONROD BUSHING (SMALL END) 3 S.70	3	
52	90922300	LOWER HALF CONROD BUSHING 3 (BIG END) S.70	3	
52	90922500	LOWER HALF CONROD BUSHING 3 +0.50 (BIG END) S.70	3	
52	90922400	LOWER HALF CONROD BUSHING 3 +0.25 (BIG END) S.70	3	
51	90922000	UPPER HALF CONROD BUSHING 3 (BIG END) S.70	3	
51	90922200	UPPER HALF CONROD BUSHING 3 +0.5 (BIG END) S.70	3	

Illustration Hollow shaft (spline) + SAE B flange - NPT

Pos.	Code	Description	Qty	Notes
51	90922100	UPPER HALF CONROD BUSHING +0.25 (BIG END) S.70	3	
50	71225951	PLUG CAP	3	
49	70222551	CRANKCASE PLUG	6	
48	70030501	CONNECTING ROD COMPLETE	3	
47	99381600	SCREW M10X110 UNI5931 8.8	8	
46	90517800		6	
45	94745000	SPRING D. 16X27,5	3	
44	36204866	VALVE SEAT (70HT)	6	
43	36201076	VALVE PLATE	6	
41	36204705	VALVE CAGE S.S. (70 SERIES)	6	
40	70211670		6	
39	90518000	ANTI-EXTR.RING D.32.4X36.5X1.5	6	
38	99367100		14	
37	90386550		12	
36	36728901		3	
35	36726501		3	
34	90241000		3	
33	70216570		3	
32	90240000		3	
31	70080570		3	
30	90362650		3	
29	70124241		1	
28	70224136	PISTON BOLT	3	
27	90358450		3	
26	70040509	PISTON D.36X63	3	
25	96709900	WASHER D.10X45	3	
24	90167700	OIL SEAL D.36X47X7	3	
23	97742000	GUDGEON PIN D.18X36	3	
22	70050115	PISTON GUIDE T.N.	3	
21	70606801	PISTON GUIDE ASSY	3	
20	90166800	OIL SEAL D.35X52X7	1	
19	70150022	BEARING COVER (PTO SIDE)	1	
17	70020835		1	
16	99312300	CONN.ROD BOLT M8X1X42	6	
15	98200500	PLUG D. 15	5	
14	90394200	OR D.190.17X2.62 NBR 70SH	1	
13	70160022		1	

Illustration Hollow shaft (spline) + SAE B flange - NPT

Pos.	Code	Description	Qty	Notes
12	98211500	OIL DIPSTICK D.21,5X70	1	
11	98210050	PLUG G3/8x13 TE22	1	
10	90383300	O-RING 13,95X2,62 (3056)	4	
9	99185400	SCREW M6X16 UNI 5931 8.8 Z.	20	
8	70150122	BEARING COVER (OIL GLASS SIDE)	1	
7	90387700	O-RING 39,34X2,62 (3156)	1	
6	70211801	OIL SIGHT GLASS	1	
5	90075600	CIRCLIP D.45 (ZJ45)	1	
4	70220381	SHIM 0.25 MM.	1	
4	70220081	SHIM 0.1 MM.	1	
3	90391500	O-RING D. 80.6X2.62 (3318)	2	
2	91847700	TAPER ROLLER BEARING 33207/Q	2	
1	70010022	CRANKCASE	1	