



FE5102



TECHNICAL INFORMATION

Flow (L/min)	2,0 / 2,4
Flow (US Gpm)	0,52 / 0,64
Rotation regime (rpm)	1450 / 1750
Pressure (MPa)	10
Pressure (bar)	100
Pressure (psi)	1450
Power (hp)	0,57 / 0,68
Power (kW)	0,42 / 0,50
Overall dimensions L x l x h (mm)	177x175x130
Weight (kg)	5,2



Documents

Male shaft (key) - GAS

Male shaft (key) + integrated valve

Illustration Male shaft (key) - GAS

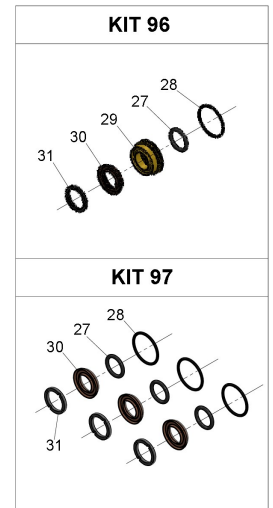
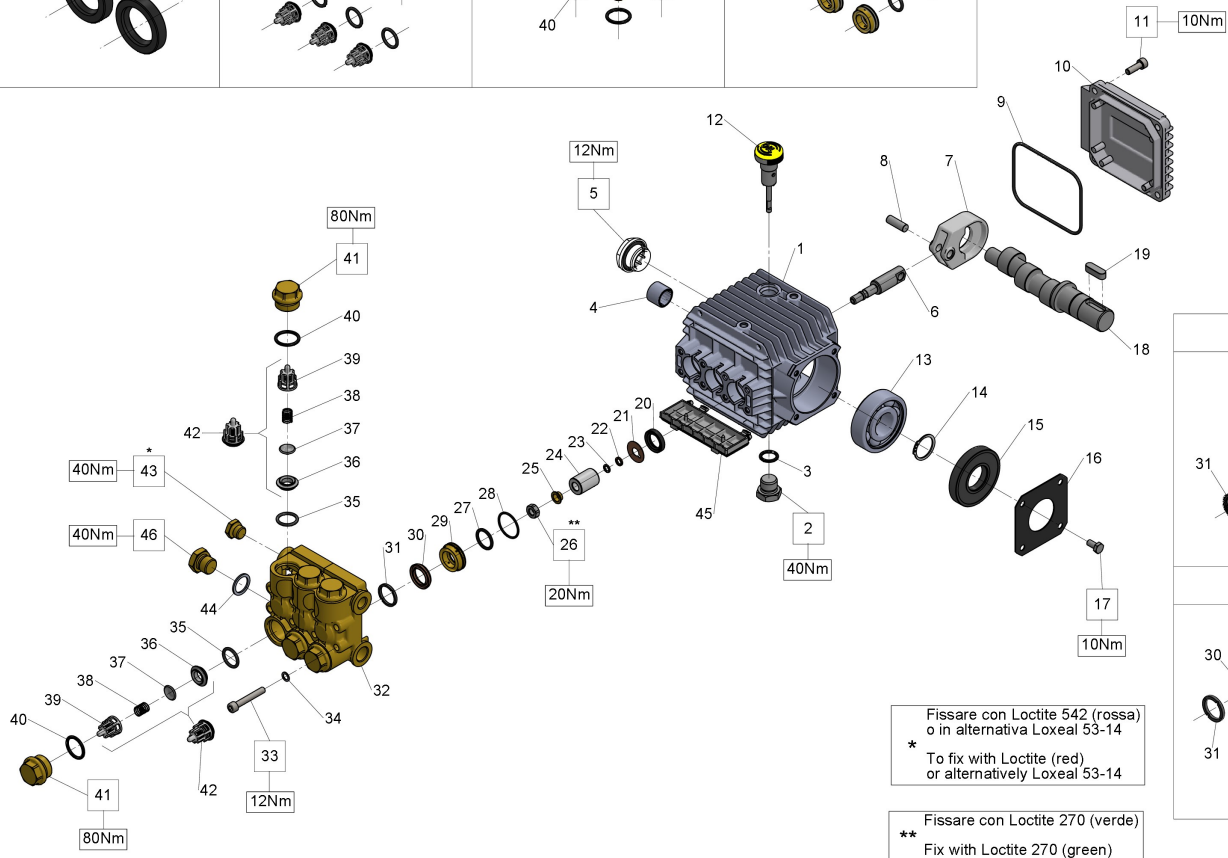
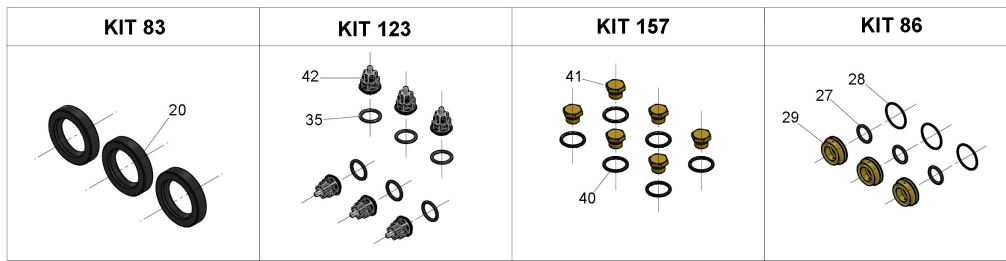


Illustration Male shaft (key) - GAS

Pos.	Code	Description	Qty	Notes
KIT97	34009701		1	
KIT96	34009601		1	
KIT86	34008601		1	
KIT83	34008301		1	
KIT157	34015701		1	
KIT123	34012301	KIT 123 INTAKE/DELIVERY VALVE	1	
46	98210000	PLUG G3/8X13	1	
45	51209051		1	
44	96738000	WASHER 17,5X23X1,5	1	
43	98204100	PLUG G1/4X9	1	
42	36711501	INTAKE/DELIVERY VALVE	6	
41	98221600		6	
40	90384700	O-RING 20,29X2,62(3081)	6	
39	36202551	VALVE CAGE	6	
38	94737600	SPRING D. 9,4X14,8	6	
37	36200176	VALVE PLATE	6	
36	36200366	VALVE SEAT	6	
35	90384100	O-RING 17,12X2,62 (3068)	6	
34	96693800	WASHER 6,4X10X0,7	8	
33	99194300		8	
32	51120041		1	
31	51100051	HEAD RING D. 15	3	
30	90262000	PACKING D. 15X25X5/3,1	3	
29	51080070		3	
28	90360400	O-RING 25,12X1,78 (2100)	3	
27	90383500	O-RING 15,08X2,62 (119)	3	
26	92221600	NUT M8X13X5	3	
25	44211570	WASHER D. 8	3	
24	51040009		3	
23	90357300	O-RING D. 5,28X1,78 (2021)	3	
22	90502200	ANTI-EXTRUSION RING	3	
21	96707000		3	
20	90156500		3	
19	91487700	KEY 8(h9)X7X25 UNI 6604/A	1	
18	51023065		1	
17	99180700	SCREW M 6x12 UNI 5739	4	
16	50150074	CRANKCASE COVER	1	
15	90164100	OIL SEAL D.25X62X10	1	
14	90063500	CIRCLIP D. 25 UNI 7435	1	

Illustration Male shaft (key) - GAS

Pos.	Code	Description	Qty	Notes
13	91832800		1	
12	98210300	OIL DIP-STICK G3/8X51	1	
11	99186700	SCREW M 6x18 UNI 5931	4	
10	51160022		1	
9	90391700		1	
8	97731000		3	
7	51030122		3	
6	51050056		3	
5	97596800	OIL LEVEL INDICATOR G3/4X15	1	
4	91801400		1	
3	90383300	O-RING 13,95X2,62 (3056)	1	
2	98210050	PLUG G3/8x13 TE22	1	
1	51010622		1	

Illustration Male shaft (key) + integrated valve

KIT 83	KIT 123	KIT 86	KIT 96	KIT 97	KIT 157

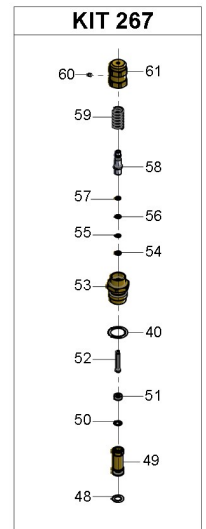
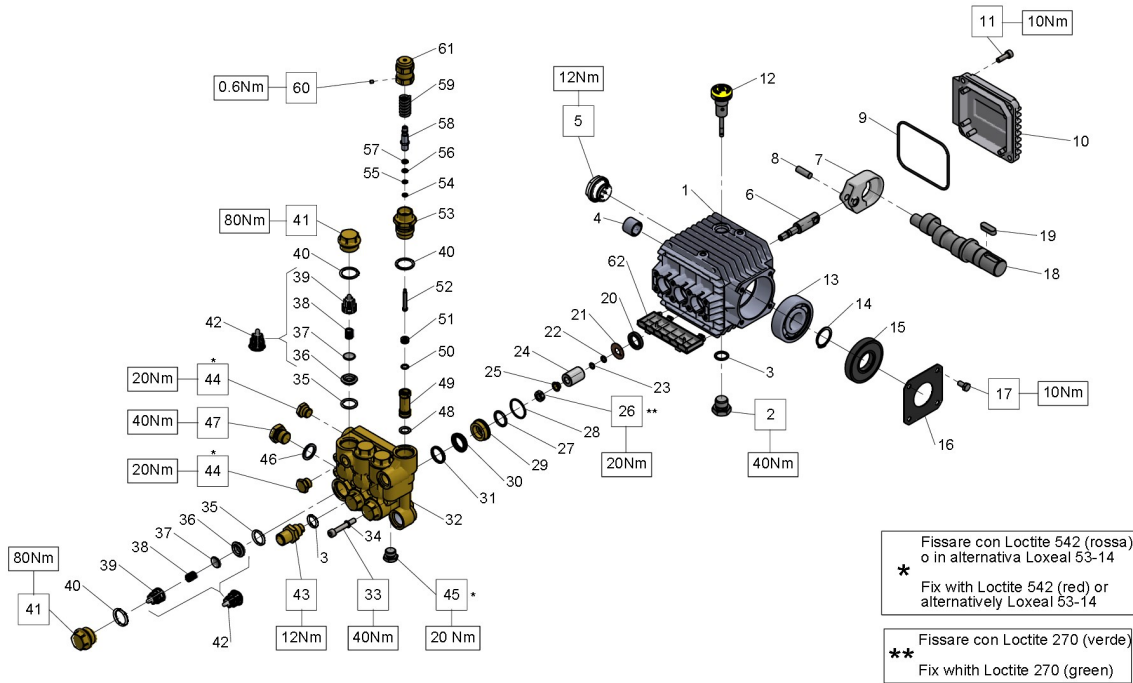


Illustration Male shaft (key) + integrated valve

Pos.	Code	Description	Qty	Notes
KIT97	34009701		1	
KIT96	34009601		1	
KIT86	34008601		1	
KIT83	34008301		1	
KIT267	34026701		1	
KIT157	34015701		1	
KIT123	34012301	KIT 123 INTAKE/DELIVERY VALVE	1	
62	51209051		1	
61	36005470		1	
60	99126100		1	
59	94740000		1	
58	36323770		1	
57	90502000		1	
56	90357000	O-RING 4,48X1,78 (2018)	1	
55	90356900		1	
54	90500700		1	
53	36005570		1	
52	36323966		1	
51	10008566		1	
50	90357600		1	
49	36005670		1	
48	90382300	O-RING 9,92X2,62 (112)	1	
47	98210000	PLUG G3/8X13	1	
46	96738000	WASHER 17,5X23X1,5	1	
45	98205700	PLUG M14X1,5X9	1	
44	98204100	PLUG G1/4X9	2	
43	10007870	NIPPLE D. 3 G3/8	1	
42	36711501	INTAKE/DELIVERY VALVE	6	
41	98221600		6	
40	90384700	O-RING 20,29X2,62(3081)	7	
39	36202551	VALVE CAGE	6	
38	94737600	SPRING D. 9,4X14,8	6	
37	36200176	VALVE PLATE	6	
36	36200366	VALVE SEAT	6	
35	90384100	O-RING 17,12X2,62 (3068)	2	
34	96693800	WASHER 6,4X10X0,7	1	
33	99194300		1	
32	51120141		1	
31	51100051	HEAD RING D. 15	3	
30	90262000	PACKING D. 15X25X5/3,1	3	

Illustration Male shaft (key) + integrated valve

Pos.	Code	Description	Qty	Notes
29	51080070		3	
28	90360400	O-RING 25,12X1,78 (2100)	3	
27	90383500	O-RING 15,08X2,62 (119)	3	
26	92221600	NUT M8X13X5	3	
25	44211570	WASHER D. 8	3	
24	51040009		3	
23	90357300	O-RING D. 5,28X1,78 (2021)	3	
22	90502200	ANTI-EXTRUSION RING	3	
21	96707000		3	
20	90156500		3	
19	91487700	KEY 8(h9)X7X25 UNI 6604/A	1	
18	51023065		1	
17	99180700	SCREW M 6x12 UNI 5739	4	
16	50150074	CRANKCASE COVER	1	
15	90164100	OIL SEAL D.25X62X10	1	
14	90063500	CIRCLIP D. 25 UNI 7435	1	
13	91832800		1	
12	98210300	OIL DIP-STICK G3/8X51	1	
11	99186700	SCREW M 6x18 UNI 5931	4	
10	51160022		1	
9	90391700		1	
8	97731000		3	
7	51030122		3	
6	51050056		3	
5	97596800	OIL LEVEL INDICATOR G3/4X15	1	
4	91801400		1	
3	90383300	O-RING 13,95X2,62 (3056)	2	
2	98210050	PLUG G3/8x13 TE22	1	
1	51010622		1	