

DATA SHEET

TRE820PISO1

Description: **TR.E 115V 50/60Hz 1,9/1,4A 1x8kV 20mA 19% C440 VIR**

GENERAL CHARACTERISTICS

The ignition transformer is CE marked, It undergo to the European low voltage directives 2014/35/EU and in particular the directives EN61558-2-3:2011-04 and EN60730-2-5:2002; it is made in compliance with the electromagnetic compliance 2014/30/EU and the directive EN61000-3-2:2006/A2:2009 and EN61000-3-3:2008. By using the advised accessories the transformer is compliant with the prescription of the generic standard EN 55014-1:2006/A1:2009 and EN55014-2:1997/A2:2008. Every single transformer, at the end of its production cycle, is tested as reported on the table below.

The ignition transformer shall be used with a control unit.

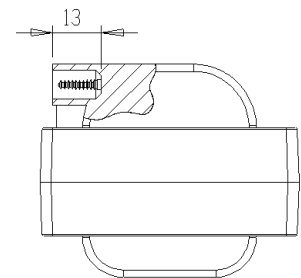
An high voltage symbol with yellow color filling has to be applied outside of the device where the transformer is mounted.

RATED DATA

Primary Supply Voltage E [V]	115 V
Frequency [Hz]	50/60 Hz
Primary Current [A]	1,9/1,4A A
Apparent Power [VA]	218,5/161 VA
Secondary Voltage at open circuit RMS [kV] $\pm 10\%$	1x8 kV
Secondary Peak Voltage at open circuit [kV]	11,31 kV
Secondary Current in short circuit RMS [mA] $\pm 10\%$	20 mA
Duty Cycle	19% on 3'
Approvals	CE

MECHANICAL DATA

External enclosure	Epoxy thermosetting resin
High Voltage output	VIRAS
High Voltage connections	Screws
Ambient Temperature - Protection	Ta 35°C - IP 00
Packaging	10 pcs box
Weight [kg]	1,306 Kg

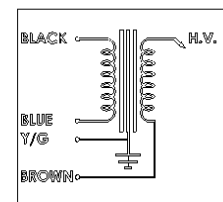
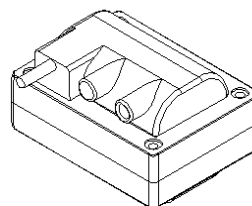
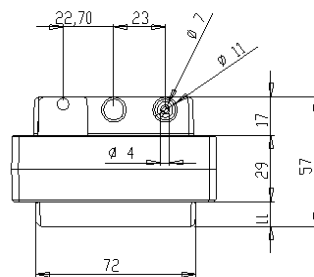
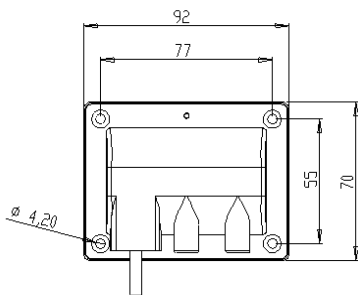


VIRAS

PRIMARY CONNECTIONS

Low Voltage connection	Cable		
Actual cable L. [mm]	380 mm	Description	SIL 4x0,50 4 END SPLICES TERMINALS

DIMENSIONS



Note

Date **28/03/2019**

Paolo Comin