

# DATA SHEET

## TRS812C/S1

Description: **TR.S 230V 50Hz 0,5A 2x4kV 12mA 100% S VIRAS**

### GENERAL CHARACTERISTICS

The ignition transformer is CE marked, It undergo to the European low voltage directives 2006/95/CE and in particular the directives EN61558-2-3:2011-04 and EN60730-2-5:2002; it is made in compliance with the electromagnetic compliance 2004/108/CE and the directive EN61000-3-2:2006/A2:2009 and EN61000-3-3:2008. By using the advised accessories the transformer is compliant with the prescription of the generic standard EN 55014-1:2006/A1:2009 and EN55014-2:1997/A2:2008. Every single transformer, at the end of its production cycle, is tested as reported on the table below.

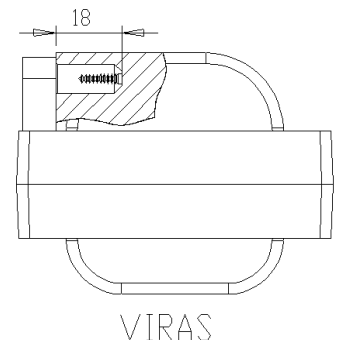
An high voltage symbol with yellow color filling has to be applied outside of the device where the transformer is mounted.

### RATED DATA

Primary Supply Voltage E [V]	<b>230 V</b>
Frequency [Hz]	<b>50 Hz</b>
Primary Current [A]	<b>0,5 A</b>
Apparent Power [VA]	<b>115 VA</b>
Secondary Voltage at open circuit RMS [kV] $\pm 10\%$	<b>2x4 kV</b>
Secondary Peak Voltage at open circuit [kV]	<b>11,31 kV</b>
Secondary Current in short circuit RMS [mA] $\pm 10\%$	<b>12 mA</b>
Duty Cycle	<b>100%</b>
Approvals	<b>CE</b>

### MECHANICAL DATA

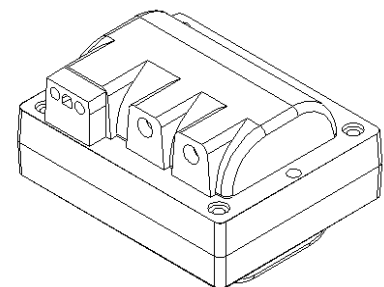
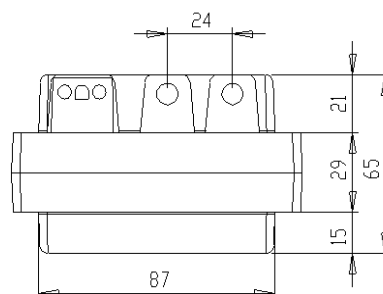
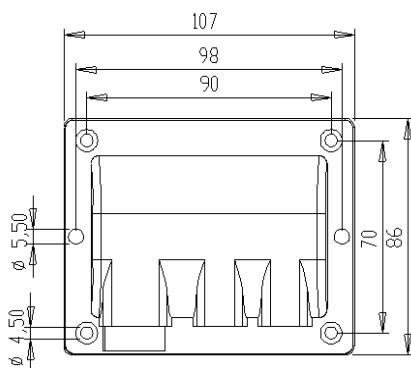
External enclosure	<b>Epoxy thermosetting resin</b>
High Voltage output	<b>VIRAS</b>
High Voltage connections	<b>Screws</b>
Ambient Temperature - Protection	<b>Ta 35°C - IP 00</b>
Packaging	<b>10 pcs box</b>
Weight [kg]	<b>1,944 Kg</b>



### PRIMARY CONNECTIONS

Low Voltage connection	<b>Plug</b>
Actual cable L. [mm]	Description

### DIMENSIONS



Note

Date **23/05/2013**

**Paolo Comin**