

Performance

- Up to 50 litres/hour flow
- 20 metres head



Proven in service the ArctikBlue® incorporates the MegaBlue® pump in a tough steel tray. Eliminating stuck float switches, the use of our thermistor technology quickly and efficiently removes all the condensate from the dairy pan, reducing the conditions that allow organic growth to build up and block drains.

Our pumps have been used for multideck and dairy cabinet condensate removal for many years, now we offer this bespoke solution in the ArctikBlue® pump and drain tray.

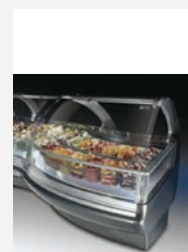
Tel: +44 (0)1932 355277

Email: info@bluediamondpump.com

Web: www.bluediamondpump.com

3 year
warranty

Application Ideas



Technical Specification

Water tank capacity	4.1 litres
Pump on/off volume	90 ml
Alarm on volume	3600 ml
Alarm signal	0 volt relay
Max alarm rating	5A, 240V AC
Input voltage	230V AC, 60 Hz
Inlet fitting	Ø 40mm ID push fit connector
Outlet fitting	Ø 12mm OD hose tail

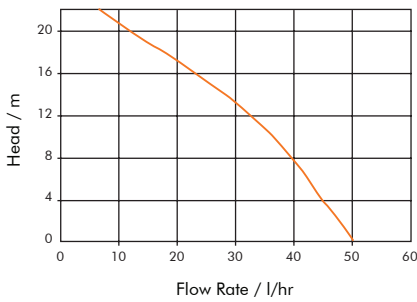


3 year
warranty

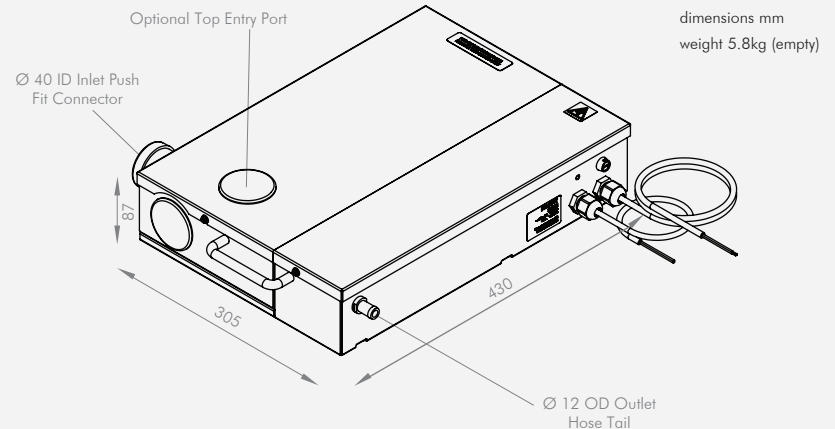
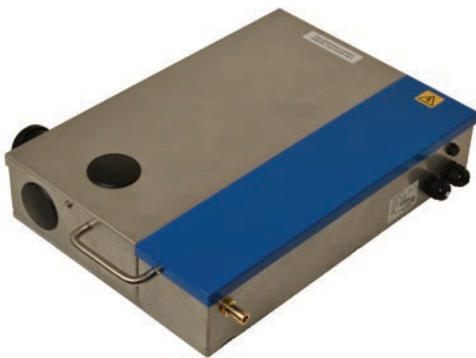
ArctikBlue®

Reliability under the coldest cabinets

Performance/Technical



Specifying ArctikBlue®



Sensor filter



Pan filter

Thermistor Sensor (energy efficient) - Connect dairy pump to case drain. The presence of condensate trips the hi-low solid state level sensors to switch pump on/off. Runs pump only when condensate produced. Alarm shuts off case in fault mode, restarts when clear.

The slim line filter probe, which houses the water sensors and high level alarm has no moving parts to become clogged or stuck it is an ideal alternative to existing float switches.

Filtration - Protecting the sensors is our swap out guard, the filter element can be changed over as a complete assembly during preventative maintenance service schedules. The main tray is also protected against objects larger than Ø 2.5mm allowing the pump to remove condensate, sludge and slurry.

Revolutionary pumping principle



Patented rotary diaphragm pump

Making all these advantages possible is our advanced rotary diaphragm technology as used in the MegaBlue®. The condensate is drawn into the pump by vacuum then mechanically driven within a re-inforced elastomer diaphragm to the outlet under pressure. This system even tolerates suspended solids and light slurries and also happily runs dry.

ArctikBlue® - Reliability under the coldest cabinets

Royston Road, Byfleet, Surrey, KT14 7NY, England/UK
Tel: +44 (0)1932 355277 Fax: +44 (0)1932 351285
Email: info@bluediamondpump.com
www.bluediamondpump.com

BlueDiamond®
condensate removal pumps