

Technical document for modular base system

Article : modular base system

Material : Half slot steel strut channel and plastic PA66 & rubber base

surface treatment : Hot dipped galvanizing

color : silver/gray

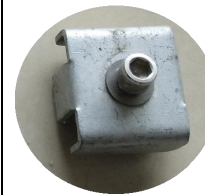


Model	Net Weight	Loading capacity
1200*1000	30.0kgs	2000 kgs

Accessories :

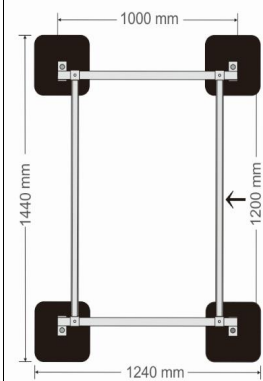


1- 4 pcs * connector(A) between strut and quipment

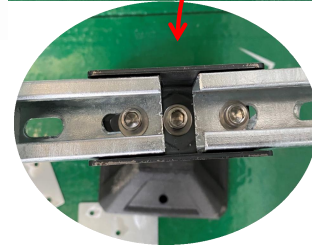
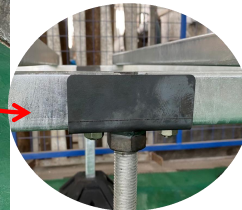
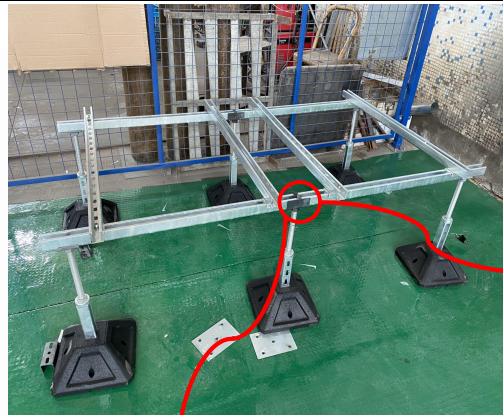


2- 4 pcs * connector(B) between struts up and down

Dimensions



Cross bar seen from above
1200 mm



Package : 2 * Individual carton box for each unit.

- 1- Size of strut is 40*40 mm.
- 2- Extendable sleeves as optional.
- 3- Height adjustable 300-460mm