

Regulator

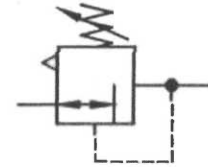
STANDARD-SERIES

Item	type	DR.11	DR.12
port size		G 1/4	G 3/8
description			
air line regulator with diaphragm and relieving feature			
mounting			
arbitrary			
supply pressure			
Pe max. 25 bar			
reduced pressure			
Pa 0,5-10 bar standard, 0,1-3 bar, 0,5-6 bar, 0,5-16 bar			
media and ambient temperature			
max. 80°C (oth. temperature ranges available upon request)			
fixing			
panel mounting, bracket			
weight			
0,550 kg, (0,500 kg without gauge)			



replacement parts (repair kit: ESA-DR.11)

no	description	material	order-no
1	body	Z 410	---
2	spring cage DR.11-2	Z 410	---
3	diaphragm	NBR - Ms	
4	valve cone	NBR - Ms	
5	regulat. spring DR.11-11	st. - galvanized	5.1511.11.000
6	spring DR.11-24	stainless steel	5.1511.24.000



series 1

ordering information

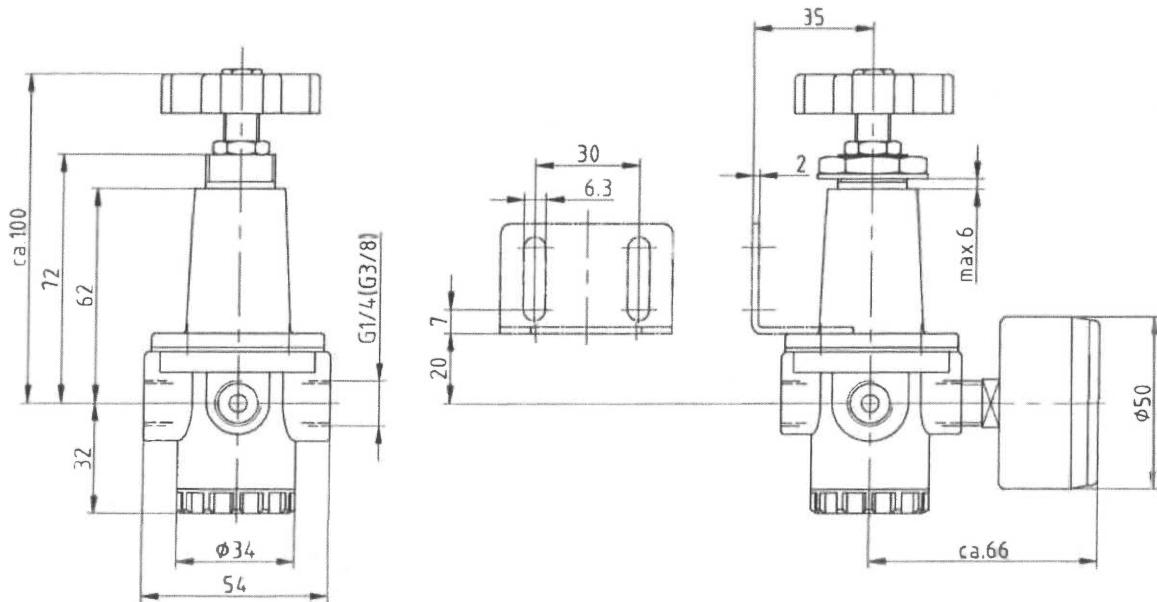
DR. ** * *
 type reduced pressure
 1 port size 2 option

ordering example: DR.11 G 0,1-3

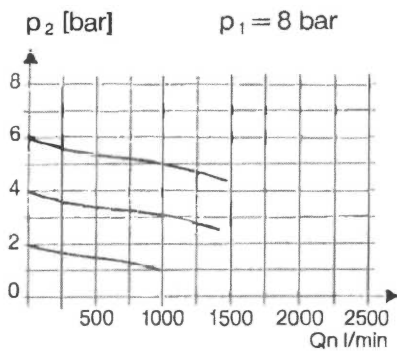
port size	
1	11 G 1/4
	12 G 3/8
options	
2	G gauge ø50
	S panel mounting

application information

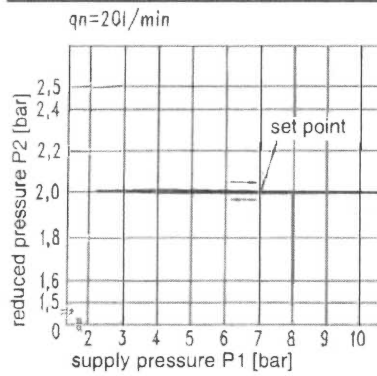
dimensions (mm)



flow characteristics



pressure characteristics



accessories

panel mounting ring M 20 x 1,5



type: DR.11-7

gauge



type:
G 50. 6 R
G 50.10R
G 50.16R

mounting bracket



type: BW.10



type: WH.M 20

spring



type:
0,1- 3: DR.11-31
0,5- 6: DR.11-33
0,5-16: DR.11-12